



**Rhode Island Energy™**  
a PPL company

# L190 115 kV Transmission Line Asset Condition Refurbishment Project

Presentation to the Energy Facility Siting Board  
August 9, 2022 – East Greenwich  
August 10, 2022 – South Kingstown

# Agenda

- Introduction
- Project Area
- Project Overview
- Need
- Alternatives
- Construction Sequence
- Schedule
- Community Outreach
- Impact Mitigation
- Project Impact



**Rhode Island Energy™**  
a PPL company



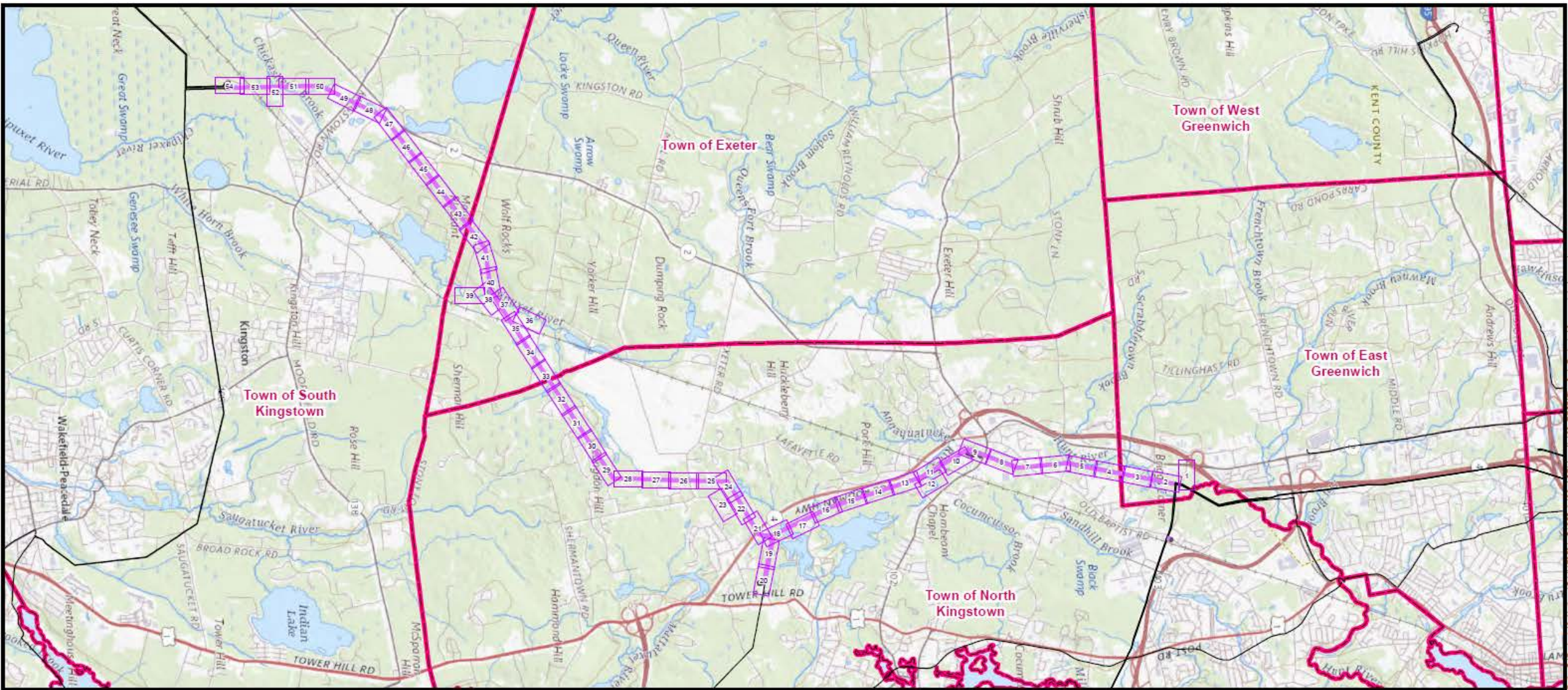
View North – Stony Lane, North Kingstown



# Project Area



**Rhode Island Energy™**  
a PPL company





# Project Overview



**Rhode Island Energy™**  
a PPL company

- 12.5 miles from Davisville Tap to West Kingston No. 62 Substation.
- Line dates back to 1960s
- Structures:
  - Replace 146 existing single-circuit wood H-frame and 3-pole structures with weathering steel pole (some poles in wet areas may be brown galvanized)
- Reconductor: 795 kcmil “Drake” ACSS from Davisville Tap to West Kingston No. 62 Substation, Old Baptist Tap (200 feet), and Tower Hill Tap North and South circuits (0.5 mile)
- Shield wire - fiber optic ground wire



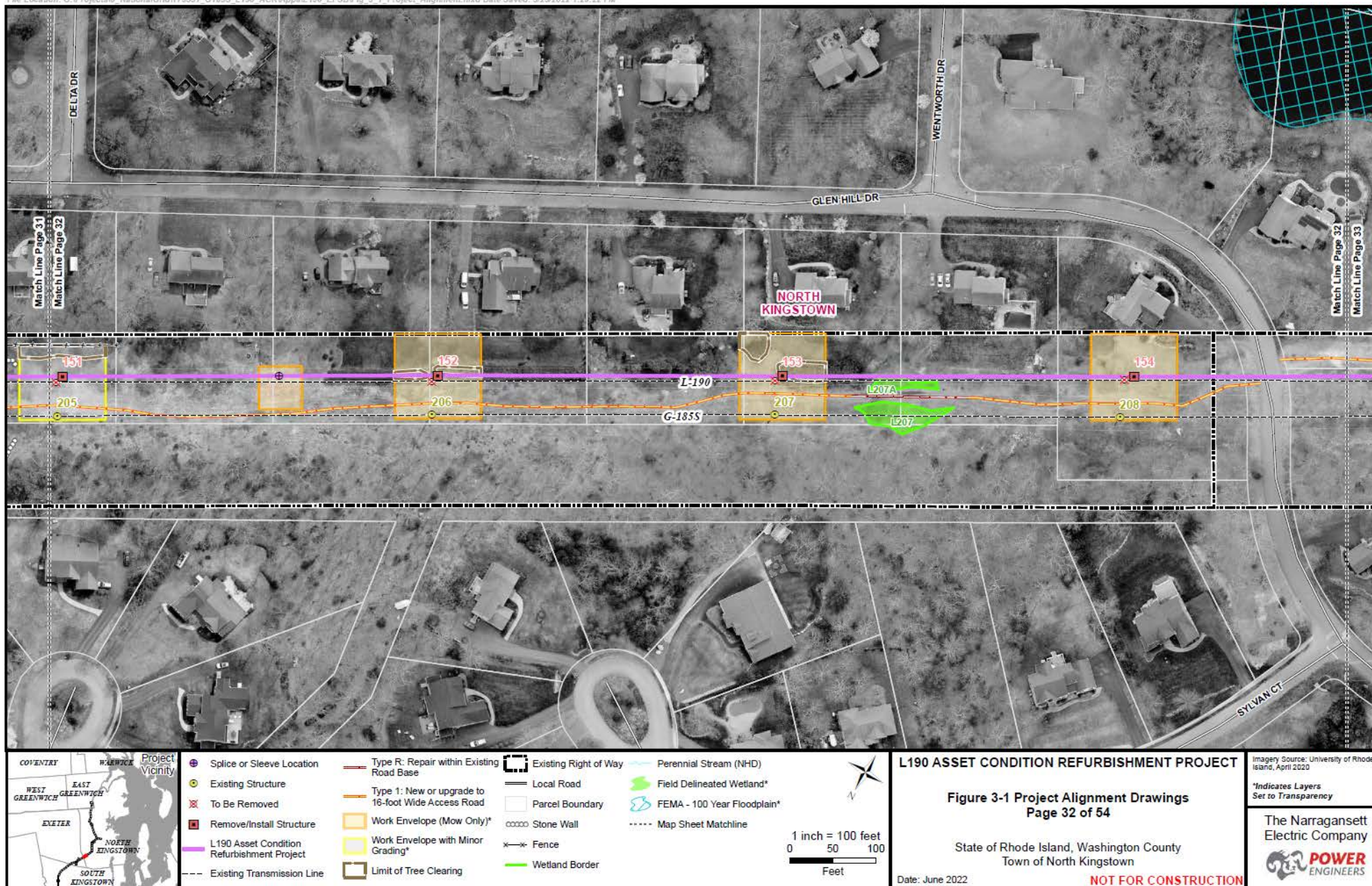
View to South – Waites Corner Rd, South Kingstown





**Rhode Island Energy™**

a PPL company



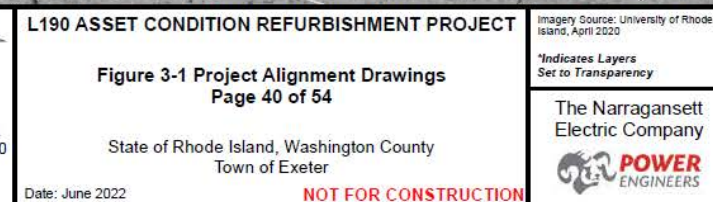
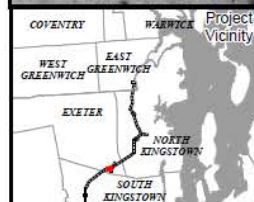
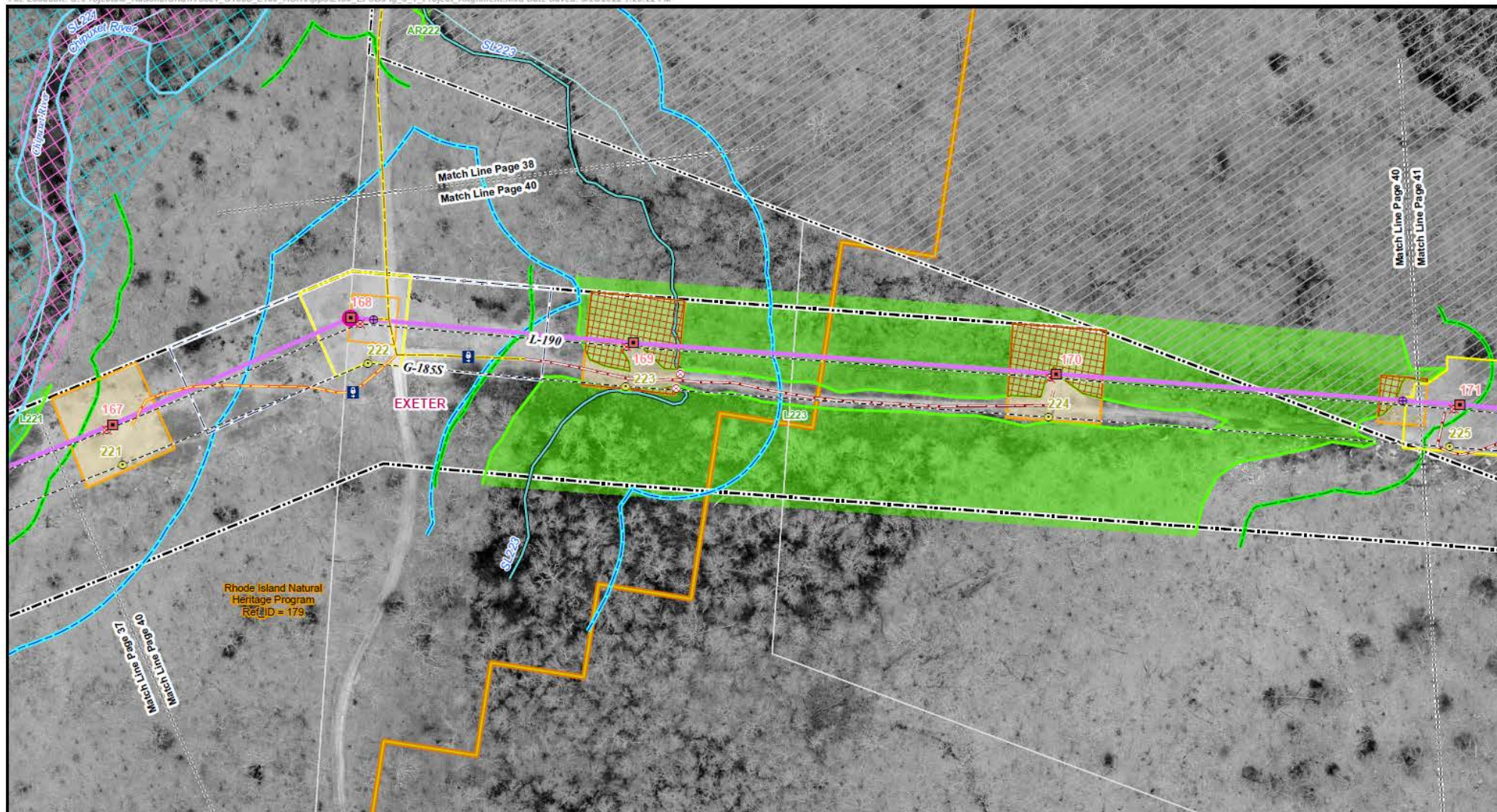
THIS DOCUMENT IS INTENDED FOR GENERAL PLANNING & INFORMATION PURPOSES ONLY. ALL MEASUREMENTS & LOCATIONS ARE APPROXIMATE.





**Rhode Island Energy™**

a PPL company



THIS DOCUMENT IS INTENDED FOR GENERAL PLANNING & INFORMATION PURPOSES ONLY. ALL MEASUREMENTS & LOCATIONS ARE APPROXIMATE.



# Project Need



**Rhode Island Energy™**  
a PPL company

- Asset condition refurbishment project is driven by the need to maintain a reliable system. The reliability is compromised by the following:
  - Pole top rot and aging
  - Several locations do not meet current insulation standards
- Project engineered with increased capacity to address thermal overloads identified in the ISO-NE's Eastern Connecticut (ECT) 2029 Need Assessment.
- Project includes addition of high-speed communications between substations via a dual purpose Optical Ground Wire (OPGW) –steel/aluminum ground wire with integrated fiber optics.



View to North – South Rd, East Greenwich

# Alternatives



**Rhode Island Energy™**  
a PPL company

- No-Action – Does not address the identified need.
- Parallel Transmission Line
- Railroad ROW
- Public Streets and Highways
- Underground Transmission Route Alternative
- Project (Preferred Option)



# Construction Sequence

- Removal of vegetation and Right of Way (ROW) mowing in advance of construction;
- Installation of soil erosion and sediment controls;
- Access road and work pad maintenance or construction;
- Installation of replacement structures;
- Transfer of existing conductors and OPGW;
- Removal and disposal of existing transmission line components;
- Replace existing conductors and OPGW; and
- Restoration of the ROW.



**Rhode Island Energy™**  
a PPL company



# Schedule

ACTIVITY	ESTIMATED START DATE	ESTIMATED COMPLETION DATE
Planning and Engineering	Q2 2019	Q3 2022
Permitting and Licensing	Q1 2021	Q3 2022
Construction	Q4 2022	Q4 2024
Facilities In-Service	Q4 2024	
Final Restoration	Q2 2025	



# Community Outreach

- Reviewed Project with Town officials
- Pre-construction outreach
  - Contacted abutters by mailing in advance of field survey and geotechnical work
- On-going outreach
  - Community Open House events;
  - Community outreach (e.g. door-to-door);
  - Project webpage;
  - Project hotline;
  - Fact sheets, door hangers, FAQs, timelines, etc.; and
  - Advertising.

# Summary of Existing Natural and Social Environment

- Watershed and Waterways
- Soils
- Wetlands
- Rare Species
- Land Use
- Cultural and Historical Resources



View to the North - Oak Hill Road, North Kingstown



# Impact Mitigation

- No long-term impacts to natural or social environment are expected.
- Any short-term impacts will be mitigated by use of soil erosion and sediment controls and best management practices (BMPs)
- An environmental monitor will ensure compliance with all regulatory programs and permit conditions

# Project Impact

- Construction noise is expected to be intermittent
- Traffic impacts will be temporary
- No long-term impacts to residential, commercial or industrial land uses
- Disturbed areas will be restored to previously existing or improved condition





Rhode Island Energy™

a PPL company



# L190 115 kV Transmission Line Asset Condition Refurbishment Project