

One Financial Plaza, Suite 1430
Providence, RI 02903-2485
Direct (401) 709-3314
Fax (401) 709-3377
placouture@rc.com

Via Hand Delivery

February 10, 2014

Patricia S. Lucarelli, Esq.
Energy Facility Siting Board
89 Jefferson Boulevard
Warwick, RI 02888

Re: Docket No. SB-2014-1
In re: The Narragansett Electric Company d/b/a National Grid
G-185S 115kV Transmission Line Reconductoring Project

Dear Patti:

I am enclosing for filing an original and four (4) copies of National Grid's Responses to the First Set of Data Requests submitted by the Energy Facility Siting Board in the above referenced matter.

Please acknowledge receipt of this filing on the enclosed copy of this letter and the response and return them to me. Thank you.

Sincerely,



Peter V. Lacouture

PVL/blv
Enclosures

Copy to: Chairperson Margaret E. Curran, Esq. *(via hand delivery)*
Janet Coit *(via hand delivery)*
Kevin Flynn *(via hand delivery)*
Service List *(via electronic mail)*



Law Offices

BOSTON

PROVIDENCE

HARTFORD

NEW LONDON

STAMFORD

WHITE PLAINS

NEW YORK CITY

ALBANY

SARASOTA

www.rc.com

12730239-v1

STATE OF RHODE ISLAND AND PROVIDENCE PLANTATIONS
ENERGY FACILITY SITING BOARD

In Re: The Narragansett Electric Company :
d/b/a National Grid :
G-185S 115kV Transmission Line : Docket No. SB-2014-1
Reconductoring Project :

National Grid's Responses to the
Energy Facility Siting Board's First Set of Data Requests

DATA REQUEST NO. 1-1: Please provide a description of any community outreach engaged in by National Grid regarding this project.

RESPONSE: On January 15, 2014, National Grid sent out fact sheets describing the Project to all abutters. The fact sheet provided information about the location of the Project, construction activities, and contact information for the Project's Stakeholder Relations Manager. A copy of the fact sheet is attached as Exhibit A.

In addition to contacting project abutters, National Grid has briefed municipal officials in Warwick, East Greenwich and North Kingstown regarding the Project.

National Grid representatives will maintain communications with abutters and municipal officials throughout the construction and post-construction phases to address any questions that may arise.

Response prepared by or under the supervision of
Shaun Vacher

STATE OF RHODE ISLAND AND PROVIDENCE PLANTATIONS
ENERGY FACILITY SITING BOARD

In Re: The Narragansett Electric Company :
d/b/a National Grid :
G-185S 115kV Transmission Line : Docket No. SB-2014-1
Reconductoring Project :

National Grid's Responses to the
Energy Facility Siting Board's First Set of Data Requests

DATA REQUEST NO. 1-2: Please provide copies of any materials distributed as part of National Grid's community outreach.

RESPONSE: Materials distributed as part of National Grid's community outreach include the attached Exhibit A and the presentation provided at the briefings for municipal officials which is attached as Exhibit B.

STATE OF RHODE ISLAND AND PROVIDENCE PLANTATIONS
ENERGY FACILITY SITING BOARD

In Re: The Narragansett Electric Company :
d/b/a National Grid :
G-185S 115kV Transmission Line : Docket No. SB-2014-1
Reconductoring Project :

National Grid's Responses to the
Energy Facility Siting Board's First Set of Data Requests

DATE REQUEST NO. 1-4: Please explain why if the ROW is currently maintained additional tree removal is necessary.

RESPONSE: During the preliminary planning for the Project, the Company proposed to install four (4) temporary poles to support the L-190 Line while the double circuit structures were replaced and the G-185S Line was reconducted. This would have required tree clearing. However, National Grid construction managers have determined that temporary poles are not needed so no tree clearing should be necessary. As discussed in the Environmental Report, mowing of existing vegetation will be necessary to provide access and a safe work area.

STATE OF RHODE ISLAND AND PROVIDENCE PLANTATIONS
ENERGY FACILITY SITING BOARD

In Re: The Narragansett Electric Company :
d/b/a National Grid :
G-185S 115kV Transmission Line : Docket No. SB-2014-1
Reconductoring Project :

National Grid's Responses to the
Energy Facility Siting Board's First Set of Data Requests

DATA REQUEST NO. 1-5: Please explain the extent of the tree removal/trimming and identify whether such removal/trimming will have an adverse visual impact on neighbors.

RESPONSE: As noted in the response to Data Request No. 1-4, tree removal will not be necessary for this Project. Once the project is complete, the ROW will continue to be treated on its scheduled integrated vegetation management (IVM) cycle as it has been. Integrated vegetation management focuses on the removal of tall-growing tree and shrub species to encourage the establishment of a low-growing shrub population on the right-of-way. Methods used include hand cutting with chainsaws, mowing, and selective herbicide applications.

National Grid's vegetation management work is organized into two programs; the IVM or right-of-way floor program which manages the vegetation within the right-of-way corridor, and the sideline program which manages vegetation, mainly mature trees, adjacent to the cleared right-of-way corridor. The floor program for this particular ROW was last completed in 2012 and is on a five year cycle. The sideline was last completed in 2011 and is on a ten year cycle. Occasional "off-cycle" or hot-spot work may be necessary between cycles.

Prior to commencing vegetation management on a right of way, National Grid notifies abutters with an information sheet and door hanger, copies of which are attached as Exhibit C.

CERTIFICATE OF SERVICE

I hereby certify that a true copy of the within was sent by e-mail to the following this the 10th day of February, 2014.

SB-2014-1 Narragansett Electric Co. – G-185S 115kV Transmission Line Reconductoring Project – SERVICE LIST AS OF 1/23/14

NAME/ADDRESS	E-MAIL	PHONE/FAX
Peter V. Lacouture, Esq. Robinson & Cole LLP One Financial Plaza Suite 1430 Providence, RI 02903	Placouture@rc.com	401-709-3314 401-709-3399
Ms. Bess Gorman, Esq. Assistant General Counsel and Director Christopher J. Novak, Esq. Counsel Legal Department, National Grid 40 Sylvan Road Waltham, MA 02451	Bess.Gorman@nationalgrid.com Chris.Novak@nationalgrid.com	781-907-1834 781-907-5701 (fax) 781-907-2112
James H. Reilly, Esq. City Solicitor Town of North Kingstown Kelly, Kelleher, Reilly & Simpson 146 Westminster Street, Ste. 500 Providence, RI 02903	jreilly@kkr.com	401-272-1312
Peter D. Ruggiero, Esq. City Solicitor Ruggiero Brochu 20 Centerville Road Warwick, RI 02886	peter@rubroc.com	401-737-8700
Peter A. Clarkin, Esq. City Solicitor Town of East Greenwich McKenney, Quigley, Izzo & Clarkin 95 Chestnut Street Providence, RI 02903	pclarkin@mqlaw.com	401-490-2650
Mr. Leo Wold, Esq.	LWold@riag.ri.gov	401-222-2424 ext 2218

Karen Lyons, Esq. Department of Attorney General 150 South Main Street Providence, RI 02903	klyons@riag.ri.gov	
Ms. Janet Coit, Director Dept. of Environmental Management 235 Promenade Street Providence, RI 02908	Janet.coit@dem.ri.gov Rayna.maguire@dem.ri.gov	401-222-4700 Ext 2409
Ms. Margaret E. Curran Chairperson 89 Jefferson Boulevard Warwick, RI 02886	Margaret.Curran@puc.ri.gov	401-941-1690
Mr. Kevin Flynn, Assoc. Director for Division of Planning Department of Administration One Capitol Hill, 3 rd Floor Providence, RI 02903	kevin.flynn@doa.ri.gov	401-222-6496
Mr. John J. Spirito, Esq. (e-mail only) Division of Public Utilities and Carriers	jspirito@dpuc.ri.gov sscialabba@dpuc.ri.gov tkogut@dpuc.ri.gov	401-780-2152
Patricia S. Lucarelli, Esq. Energy Facility Siting Board 89 Jefferson Boulevard Warwick, RI 02886	Patricia.lucarelli@puc.ri.gov	401-780-2104

/s/ Brenda L. Vucci

**National Grid G-185S Transmission Line Reconductoring Project
Warwick, East Greenwich and North Kingstown, Rhode Island**

Dear Neighbors,

National Grid owns and operates the electric transmission lines within the existing utility right-of-way located near your home or business in Warwick, East Greenwich and North Kingstown, Rhode Island. In order to improve reliability and meet the growing demand for electricity in the area, we will be performing an upgrade of one of the transmission lines in this right of way. This work will include replacing existing wires and some of the support structures along the project route which is approximately 5.3 miles from our Kent County Substation on Cowesett Road in Warwick to our facility off South County Trail in East Greenwich (the "Project").

These improvements require us to file an application with the Rhode Island Energy Facility Siting Board (EFSB). We expect to submit our Application in early 2014 for these upgrades. The EFSB will hold a public hearing in Warwick, East Greenwich or North Kingstown as part of its review process. Notice of the public hearing will be posted in local newspapers.

If our Application is approved, Project construction would begin in January 2015 and be completed by the summer of 2015. Construction will start with vegetation mowing to facilitate construction equipment access along the right-of-way. This work will be followed by the installation of erosion control devices such as straw bales and silt fencing as well as temporary swamp matting in wetland areas. Once the right-of-way is suitable for construction equipment, the pole and wire replacement phase will begin. Upon completion of construction, all construction debris will be removed and disturbed areas around structures and other graded locations will be seeded with an appropriate conservation mix and/or mulched to stabilize the soils. National Grid will send you another notification prior to construction with more detailed information.

This Project is proposed to benefit you with improved reliability in a cost effective manner. Please contact me if you would like more information about the Project or the EFSB Application process.

Sincerely,

John G. Upham II
Manager, Stakeholder Relations
National Grid
(781) 907-2206
john.uphamii@nationalgrid.com

This is an important notice. Please have it translated.

Este é um aviso importante. Queira mandá-lo traduzir.
Este es un aviso importante. Sírvase mandarlo traducir.
Avis important. Veuillez traduire immédiatement.

ĐÂY LÀ MỘT BẢN THÔNG CÁO QUAN TRỌNG
XIN VUI LÒNG CHO DỊCH LẠI THÔNG CÁO ẤY
Questa è un' informazione importante,
si prega di tradurla.

Это очень важное сообщение.
Пожалуйста, попросите чтобы
вам его перевели.

**G-185S Transmission Line Reconductoring Project
Warwick, East Greenwich and North Kingstown, RI**



Reconductoring Transmission Line
Municipal Meetings
January 9-10, 2014

Shaun Vacher
Project Manager
National Grid

Agenda

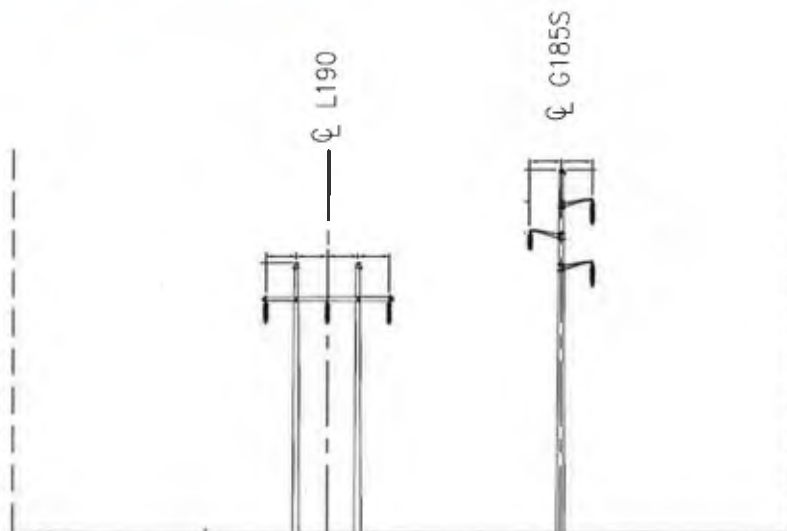
- Project Overview
- Project Location
- Why is the Project Needed?
- Order of Construction
- Project Timeline
- Company Contact Information

Project Overview

- Replace conductor (wire) of existing 5.3 mile transmission line with new, larger conductor capable of carrying more power.
- Replace 19 of 62 wood and steel structures.
 - Warwick - (7) single line structures
 - E. Greenwich – (2) single and (5) double line structures
 - N. Kingstown - (5) single line structures
- All within existing 300' transmission corridor between Kent County Sub in Warwick and Old Baptist Rd tap point in E. Greenwich.

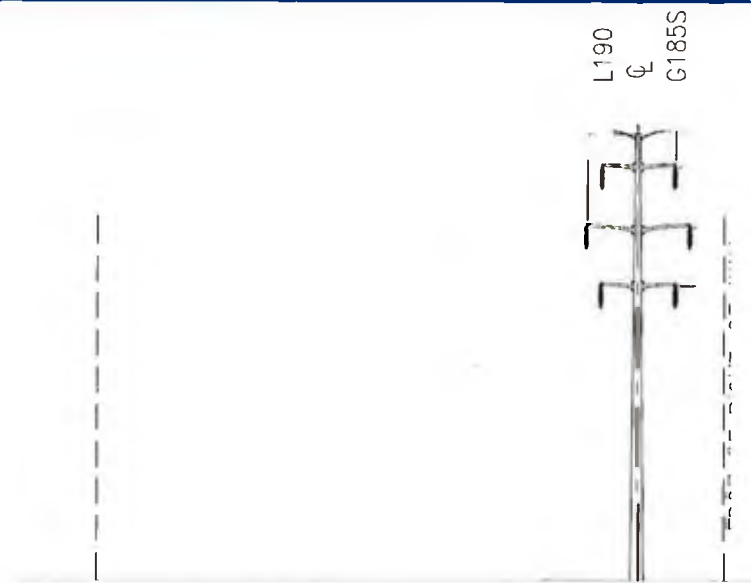
3

Single Line Example

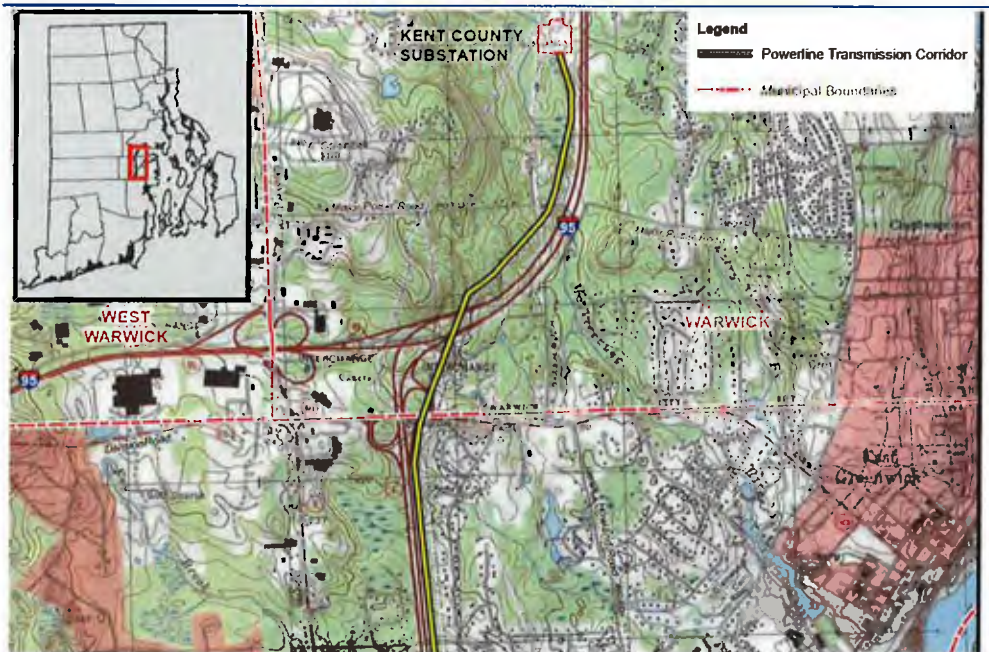


4

Double Line Example



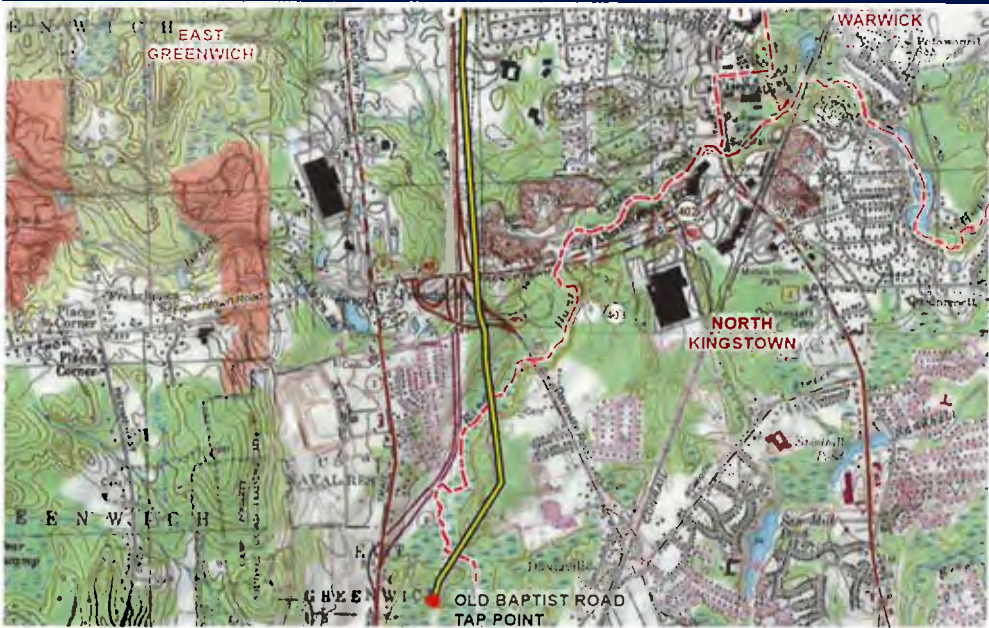
Project Location – Warwick, RI



Project Location – East Greenwich, RI



Project Location – East Greenwich & North Kingstown, RI



Why is the Project Needed?

- To avoid thermal overloads under contingency conditions.
- To maintain safe, firm, reliable electric supply to National Grid customers.

Order of Construction

- Vegetation mowing to allow access for construction equipment.
- Installation of erosion control devices to include straw bales, silt fencing, and swamp matting.
- Installation of 19 new transmission structures to support the new supply line (14 wood structures, 5 steel structures all being replaced with weathering steel poles).
- Installation of new supply line conductor and associated insulators and hardware.
- Replace 1.5 miles optical ground wire in kind.
- Final restoration and clean-up (debris removal, seed disturbed areas and stabilize soils).

Project Timeline

- **Energy Facility Siting Board Approval:** Anticipated Spring 2014.
- **Community Outreach:** Started January 2014 – ongoing.
- **Construction Start:** Upon approval and receipt of all environmental permits, late January 2015.
- **Construction Complete:** April 2015.

Questions or Concerns?

Contact:

John Upham, Stakeholder Specialist

(O) 781-907-2206

(C) 781-269-0208

john.uphamii@nationalgrid.com

Shaun Vacher, Project Manager

(O) 781-907-2538

shaun.vacher@nationalgrid.com

Work is scheduled for the transmission line right-of-way that is adjacent to or crosses your property.

This brochure provides landowners with information about vegetation maintenance activities used by National Grid.

National Grid continues to promote safety near **all** transmission lines and respects the property of others by providing notification of our activities and by addressing landowner concerns as they arise.

National Grid

National Grid provides the transmission of electric power to 3.5 million customers across New York State and New England.

Vegetation maintenance is critical to ensuring electric reliability and safety.

Regular patrols and periodic maintenance help to keep the lines free of vegetation that could potentially cause a power outage or endanger persons living or working near electric transmission lines.

Still have questions?

Customer Service

Upstate NY 1-800-642-4272

New England 1-800-322-3223

Or e-mail us at:

transmissionforestry@nationalgrid.com

Visit us at www.nationalgrid.com
and connect with us on



This is an important notice.
Please have it translated.

Este é um aviso importante. Queira mandá-lo traduzir.
Este es un aviso importante. Sírvase mandarlo traducir.
Avis important. Veuillez traduire immédiatement.
Questa è un' informazione importante, si prega di tradurla.

ĐÂY LÀ MỘT BẢN THÔNG CÁO QUAN TRỌNG
XIN VUI LÒNG CHO DỊCH LẠI THÔNG CÁO ẤY

Это очень важное сообщение.
Пожалуйста, попросите чтобы
вам его перевели.

nationalgrid

HERE WITH YOU HERE FOR YOU.

Information for landowners along our transmission lines



EXHIBIT C

Transmission Line Rights-of-Way

National Grid has the legal responsibility to provide safe and reliable electric service. In both New York and New England, public service laws establish responsibility and accountability for providing efficient, safe and reliable power within certain quality parameters.

Trees and Transmission Lines

Trees and transmission lines are not compatible. Trees that grow too close to electric transmission lines can conduct electricity and provide a path to ground, potentially causing an interruption and other significant consequences. Trees do not have to physically touch an energized power line to be dangerous. Electricity can arc or jump from a power line to nearby vegetation.

In addition to causing an interruption, this can also cause a wildfire and is very dangerous. Electric current flowing through a tree can electrocute anyone in close proximity.

Therefore, assuring trees remain clear of transmission lines is not only vital for service reliability but it is a crucial public and worker safety issue.

Right-of-Way Floor Vegetation Management

National Grid utilizes a program called Integrated Vegetation Management (IVM) to establish and foster low-growing vegetative plant communities that, in turn, require minimal maintenance and create numerous benefits for the environment.

National Grid uses herbicides to selectively remove tall-growing tree species from the rights-of-way. The remaining low-growing plant communities provide a stable vegetative cover resistant to the re-establishment of tall-growing vegetation. This also provides improved access, erosion control and improved wildlife habitat.

The IVM program focuses on complete removal of tall-growing vegetation. Pruning or topping vegetation is a short-term measure that does not provide the same benefits as removal. Topped vegetation poses a higher risk to reliability, safety and does nothing to foster a stable, desirable plant community as the

topped trees vigorously sprout back and shade out the desirable plants.

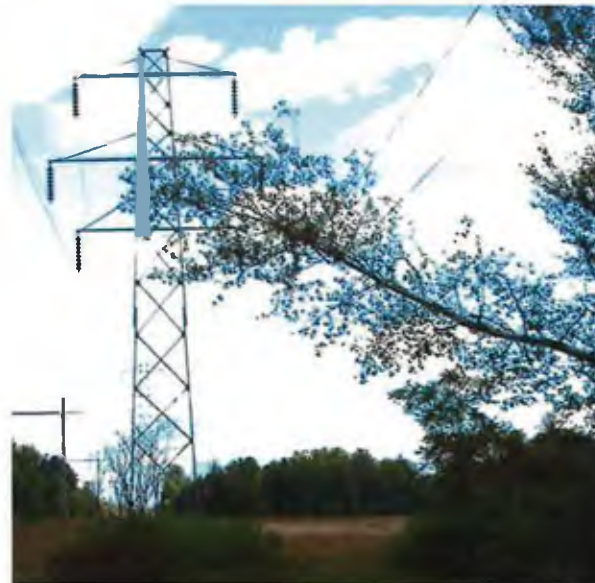
Right-of-Way Edge Danger Tree Program

Our goal is to continually improve service reliability. To this end, trees that are growing along the edges of the right-of-way corridors are periodically pruned or removed.

Targeted edge trees are those with hazardous structural defects (e.g., cracks, cavities, decay, poor limb attachments) or are species with a history of failure (e.g., poplars, white pine). Research and experience have shown that it is prudent to remove these trees before they cause an interruption.

As the work is carried out, our crews will make every reasonable attempt to protect private property. Disruption to livestock, roadways, soil, fences and gates are avoided as much as possible. Any damages are repaired within a reasonable amount of time after the disturbance.

Cut tree branches are diced close to the ground and left to decompose. Stumps are cut as low to the ground as practicable. Any useable wood, such as larger limbs and/or logs, remains along the right-of-way edge for the landowner.



Landowner Use of Transmission Rights-of-Way

Due to the potential safety and operational issues cited earlier in this brochure, it is imperative that National Grid manage its rights-of-ways to ensure that only compatible uses are allowed. Existing land uses such as cropland, gardens, lawns, pastureland and planting of low-growing trees and shrubs are compatible with our transmission line rights-of-way. However any new or expanded usage within any right-of-way requires the prior written authorization of National Grid. Please contact the Transmission Forester in your area to discuss plants that will be suitable for your site.

Unauthorized use of National Grid's transmission rights-of-way such as planting tall growing trees, cutting or pruning trees, constructing structures, stockpiling materials, excavating or operating heavy equipment all pose a threat to reliability as well as personal and public safety. Unauthorized use could result in the removal of structures or other personal property at the expense of the property owner.

We ask that prior to engaging in such activities on our transmission rights-of-way that landowners contact National Grid's Real Estate Department to discuss and review the proposed activity. This notification is required to prevent future dangerous conflicts with the electric transmission lines and possibly save lives.

Landowner Cooperation

Landowner cooperation is critical to the success of National Grid's vegetation management programs. In order to keep its transmission corridors safe and to prevent injury, property damage, environmental damage and unauthorized use of rights-of-way, National Grid attempts to communicate and cooperates with owners for crew access, maintenance activities, tree removal and security. National Grid also realizes the importance of understanding the needs and sensitivities of all property owners.

Notification of Vegetation Work



On behalf of National Grid's Vegetation Management department, _____ will soon conduct scheduled maintenance on the electric transmission right-of-way on or adjacent to your property.

The type of work to be done is indicated below:

Integrated Vegetation Management
(floor work—see back for details)

Sideline Maintenance (see back for details)

Description of work:

If you have questions regarding this work, or a private water supply well on or within 100 feet of the right-of-way, please contact:

Name _____

Company _____

Phone _____

If this box is checked, a call back is needed

Date: _____

ROW #: _____

Program Descriptions

Integrated Vegetation Management (IVM)

IVM focuses on the removal of tall-growing trees and shrubs to encourage the establishment of a low-growing shrub population on the right-of-way.

Methods used include:

- Hand cutting with chain saws
- Mowing
- Selective herbicide application (applied to foliage or cut stump surface)

Herbicide use is regulated by federal and state statutes and regulations, which protect sensitive areas, such as:

- Surface Water Supplies
- Wetlands
- Public & Private Wells

Sideline Maintenance

This work consists of removing or pruning danger trees along the sides or edges of transmission line corridors.



Methods used include:

- Skidder bucket or street bucket
- Climbers (for areas inaccessible by equipment)

For more information about our programs and work scheduled for the current year, click on "Operations Documentation" in the following link:

www.nationalgridus.com/transmission/index.asp