

August 24, 2012

**VIA HAND DELIVERY & ELECTRONIC MAIL**

Luly E. Massaro, Commission Clerk  
Rhode Island Public Utilities Commission  
89 Jefferson Boulevard  
Warwick, RI 02888

**RE: Docket 4323 - Application for Approval of a Change in Electric and Gas Base Distribution Rates Pursuant to R.I.G.L. Sections 39-3-10 and 39-3-11 Responses to Commission Data Requests - Set 3 - ELEC/GAS**

Dear Ms. Massaro:

Enclosed is an original and ten (10) copies of National Grid's<sup>1</sup> responses to the Commission's Third Set of Data Requests in the above-captioned proceeding.

The enclosed responses complete the Third Set, as indicated in the enclosed discovery log.

Thank you for your attention to this transmittal. If you have any questions, please feel free to contact me at (401) 784-7667.

Very truly yours,



Thomas R. Teehan

Enclosures

cc: Docket 4323 Service List  
Leo Wold, Esq.  
Steve Scialabba, Division

---

<sup>1</sup> The Narragansett Electric Company d/b/a National Grid (herein referred to as "National Grid" or the "Company").

**Certificate of Service**

I hereby certify that a copy of the cover letter and/or any materials accompanying this certificate were electronically submitted, hand delivered and mailed to the individuals listed below.

/S/  
 \_\_\_\_\_  
 Karen Horan

August 24, 2012  
 Date

**National Grid (NGrid) – Request for Change in Electric & Gas Distribution Rates  
 Docket No. 4323 – Service List updated on 6/22/12**

<b>Name/Address</b>	<b>E-mail Distribution</b>	<b>Phone</b>
Celia B. O'Brien, Esq. National Grid 280 Melrose St. Providence, RI 02907	<a href="mailto:Celia.obrien@us.ngrid.com">Celia.obrien@us.ngrid.com</a>	781-907-2153
Thomas R. Teehan, Esq. National Grid 280 Melrose St. Providence, RI 02907	<a href="mailto:Thomas.teehan@us.ngrid.com">Thomas.teehan@us.ngrid.com</a>	401-784-7667
	<a href="mailto:Jennifer.hutchinson@us.ngrid.com">Jennifer.hutchinson@us.ngrid.com</a>	
	<a href="mailto:Joanne.scanlon@us.ngrid.com">Joanne.scanlon@us.ngrid.com</a>	
Cheryl M. Kimball, Esq. (for NGrid) Keegan Werlin LLP 265 Franklin Street Boston, MA 02110	<a href="mailto:ckimball@keeganwerlin.com">ckimball@keeganwerlin.com</a>	617-951-1400
	<a href="mailto:lindas@keeganwerlin.com">lindas@keeganwerlin.com</a>	
Gerald Petros, Esq. Hinckley, Allen & Snyder	<a href="mailto:gpetros@haslaw.com">gpetros@haslaw.com</a>	
	<a href="mailto:aramos@haslaw.com">aramos@haslaw.com</a>	
Leo Wold, Esq. (for Division) Dept. of Attorney General 150 South Main St. Providence, RI 02903	<a href="mailto:Lwold@riag.ri.gov">Lwold@riag.ri.gov</a>	401-222-2424
	<a href="mailto:dmacrae@riag.ri.gov">dmacrae@riag.ri.gov</a>	
	<a href="mailto:Steve.scialabba@ripuc.state.ri.us">Steve.scialabba@ripuc.state.ri.us</a>	
	<a href="mailto:David.stearns@ripuc.state.ri.us">David.stearns@ripuc.state.ri.us</a>	
Michael J. Morrissey, Esq. (for AG) Dept. of Attorney General 150 South Main St. Providence, RI 02903	<a href="mailto:Mmorrissey@riag.ri.gov">Mmorrissey@riag.ri.gov</a>	401-274-4400 Ext. 2357
Ellen M. Evans, Sr. Trial Atty. Naval Facilities Engineering Command Litigation Office 720 Kennon St., Bldg. 36, Room 233 Washington Navy Yard, DC 20374-5051	<a href="mailto:ellen.evans@navy.mil">ellen.evans@navy.mil</a>	202-685-2235
Dr. Kay Davoodi, P.E. Utility Rates and Studies Office NAVFACHQ- Building 33 1322 Patterson Ave SE Washington Navy Yard, D.C. 20374-5065	<a href="mailto:Khojasteh.davoodi@navy.mil">Khojasteh.davoodi@navy.mil</a>	202-685-3319
	<a href="mailto:Larry.r.allen@navy.mil">Larry.r.allen@navy.mil</a>	
Robert J. McConnell, Esq. (Wiley Ctr.) Motley Rice LLC	<a href="mailto:bmccConnell@motleyrice.com">bmccConnell@motleyrice.com</a>	401-457-7700

321 South Main St. – 2 <sup>nd</sup> Floor Providence, RI 02903	<a href="mailto:jhowat@nclc.org">jhowat@nclc.org</a>	
Maurice Brubaker Brubaker and Associates, Inc. PO Box 412000 St.Louis, MO 63141-2000	<a href="mailto:mbrubaker@consultbai.com">mbrubaker@consultbai.com</a>	401-724-3600
Ali Al-Jabir Brubaker and Associates, Inc.	<a href="mailto:aaljabir@consultbai.com">aaljabir@consultbai.com</a>	
David Effron Berkshire Consulting 12 Pond Path North Hampton, NH 03862-2243	<a href="mailto:Djeffron@aol.com">Djeffron@aol.com</a>	603-964-6526
Bruce Oliver Revilo Hill Associates 7103 Laketree Drive Fairfax Station, VA 22039	<a href="mailto:Boliver.rha@verizon.net">Boliver.rha@verizon.net</a>	
Alex Cochis Lee Smith LaCapra Associates One Washington Mall 9th Floor Boston, MA 02108	<a href="mailto:acochis@lacapra.com">acochis@lacapra.com</a>	
	<a href="mailto:lees@lacapra.com">lees@lacapra.com</a>	
Thomas Catlin Emma Nicholson Exeter Associates 10480 Little Patuxent Parkway Suite 300 Columbia, Maryland 21044	<a href="mailto:tcatlin@exeterassociates.com">tcatlin@exeterassociates.com</a>	
	<a href="mailto:enicholson@exeterassociates.com">enicholson@exeterassociates.com</a>	
Bruce Gay Monticello Consulting 4209 Buck Creek Court North Charleston, SC 29420	<a href="mailto:bruce@monticelloconsulting.com">bruce@monticelloconsulting.com</a>	
Matthew Kahal c/o Exeter Associates 10480 Little Patuxent Parkway Suite 300 Columbia, MD 21044	<a href="mailto:mkahal@exeterassociates.com">mkahal@exeterassociates.com</a>	
<b>File original &amp; 11 copies w/:</b> Luly E. Massaro, Commission Clerk Public Utilities Commission 89 Jefferson Blvd. Warwick, RI 02888	<a href="mailto:Lmassaro@puc.state.ri.us">Lmassaro@puc.state.ri.us</a>	401-780-2107
	<a href="mailto:Anault@puc.state.ri.us">Anault@puc.state.ri.us</a>	
	<a href="mailto:Adalessandro@puc.state.ri.us">Adalessandro@puc.state.ri.us</a>	
	<a href="mailto:Nucci@puc.state.ri.us">Nucci@puc.state.ri.us</a>	
	<a href="mailto:Dshah@puc.state.ri.us">Dshah@puc.state.ri.us</a>	
	<a href="mailto:Sccamara@puc.state.ri.us">Sccamara@puc.state.ri.us</a>	

The Narragansett Electric Company  
d/b/a National Grid  
R.I.P.U.C. Docket No. 4323  
Discovery Log

DATA SET	DATA REQUEST	DATE ISSUED	DATE FILED	WITNESS	ATTACHMENT	CONFIDENTIAL ATTACHMENT
<b>DIVISION SET 1</b>						
Division Set 1	Division 1-1-ELEC	5/9/2012	<b>5/25/2012</b>	Michael D. Laflamme	Att. DIV 1-1-ELEC	
Division Set 1	Division 1-2-ELEC	5/9/2012	<b>5/25/2012</b>	Michael D. Laflamme	Att. DIV 1-2-ELEC	
Division Set 1	Division 1-3-ELEC	5/9/2012	<b>5/25/2012</b>	Michael D. Laflamme	Att. DIV 1-3-ELEC	
Division Set 1	Division 1-4-ELEC	5/9/2012	<b>5/25/2012</b>	Michael D. Laflamme	Att. DIV 1-4-ELEC	
Division Set 1	Division 1-5-ELEC	5/9/2012	<b>5/25/2012</b>	Michael D. Laflamme		
Division Set 1	Division 1-6-ELEC	5/9/2012	<b>5/23/2012</b>	Michael D. Laflamme	Att. DIV 1-6-ELEC	
Division Set 1	Division 1-7-ELEC	5/9/2012	<b>5/23/2012</b>	Michael D. Laflamme		
Division Set 1	Division 1-8-ELEC	5/9/2012	<b>5/25/2012</b>	Michael D. Laflamme	Att. DIV 1-8-ELEC	
Division Set 1	Division 1-9-ELEC	5/9/2012	<b>5/23/2012</b>	Michael D. Laflamme	Att. DIV 1-9-ELEC	
Division Set 1	Division 1-10-ELEC	5/9/2012	<b>5/25/2012</b>	Michael D. Laflamme		
Division Set 1	Division 1-11-ELEC	5/9/2012	<b>5/23/2012</b>	Michael D. Laflamme	Att. DIV 1-11-ELEC	
Division Set 1	Division 1-12-ELEC	5/9/2012	<b>5/23/2012</b>	Michael D. Laflamme		
Division Set 1	Division 1-13-ELEC	5/9/2012	<b>5/23/2012</b>	Michael D. Laflamme	Att. DIV 1-13-ELEC	
Division Set 1	Division 1-14-ELEC	5/9/2012	<b>5/23/2012</b>	Michael D. Laflamme		
Division Set 1	Division 1-15-ELEC	5/9/2012	<b>5/23/2012</b>	Michael D. Laflamme		
Division Set 1	Division 1-16-ELEC	5/9/2012	<b>5/23/2012</b>	Michael D. Laflamme		
Division Set 1	Division 1-17-ELEC	5/9/2012	<b>5/23/2012</b>	Michael D. Laflamme		
Division Set 1	Division 1-18-ELEC	5/9/2012	<b>5/23/2012</b>	Michael D. Laflamme		
Division Set 1	Division 1-19-ELEC	5/9/2012	<b>5/23/2012</b>	Michael D. Laflamme		
Division Set 1	Division 1-20-ELEC	5/9/2012	<b>5/25/2012</b>	Michael D. Laflamme		
Division Set 1	Division 1-21-ELEC	5/9/2012	<b>5/23/2012</b>	Michael D. Laflamme	Att. DIV 1-21-ELEC	
Division Set 1	Division 1-22-ELEC	5/9/2012	<b>5/23/2012</b>	Michael D. Laflamme		
Division Set 1	Division 1-23-ELEC	5/9/2012	<b>5/23/2012</b>	Michael D. Laflamme	Att. DIV 1-23-ELEC	
Division Set 1	Division 1-24-ELEC	5/9/2012	<b>5/25/2012</b>	Michael D. Laflamme		
Division Set 1	Division 1-25-ELEC	5/9/2012	<b>5/23/2012</b>	Michael D. Laflamme		
Division Set 1	Division 1-26-ELEC	5/9/2012	<b>5/23/2012</b>	Michael D. Laflamme		
Division Set 1	Division 1-27-ELEC	5/9/2012	<b>5/23/2012</b>	Michael D. Laflamme	Att. DIV 1-27-ELEC	
Division Set 1	Division 1-28-ELEC	5/9/2012	<b>5/23/2012</b>	Michael D. Laflamme		

The Narragansett Electric Company  
d/b/a National Grid  
R.I.P.U.C. Docket No. 4323  
Discovery Log

DATA SET	DATA REQUEST	DATE ISSUED	DATE FILED	WITNESS	ATTACHMENT	CONFIDENTIAL ATTACHMENT
Division Set 1	Division 1-29-ELEC	5/9/2012	5/23/2012	Michael D. Laflamme	Att. DIV 1-29-ELEC	
Division Set 1	Division 1-30-ELEC	5/9/2012	5/23/2012	Michael D. Laflamme		
Division Set 1	Division 1-31-ELEC	5/9/2012	5/23/2012	Michael D. Laflamme		
<b>DIVISION SET 2</b>						
Division Set 2	Division 2-1-GAS	5/14/2012	5/25/2012	Michael D. Laflamme	Att. DIV 2-1-GAS	
Division Set 2	Division 2-2-GAS	5/14/2012	5/25/2012	Michael D. Laflamme	Att. DIV 2-2-GAS	
Division Set 2	Division 2-3-GAS	5/14/2012	5/25/2012	Michael D. Laflamme		
Division Set 2	Division 2-4-GAS	5/14/2012	5/25/2012	Michael D. Laflamme	Att. DIV 2-4-GAS	
Division Set 2	Division 2-5-GAS	5/14/2012	5/25/2012	Michael D. Laflamme		
Division Set 2	Division 2-6-GAS	5/14/2012	5/25/2012	Michael D. Laflamme	Att. DIV 2-6-GAS	
Division Set 2	Division 2-7-GAS	5/14/2012	5/25/2012	Michael D. Laflamme	Att. DIV 2-7-GAS	
Division Set 2	Division 2-8-GAS	5/14/2012	5/25/2012	Michael D. Laflamme	Att. DIV 2-8-GAS	
Division Set 2	Division 2-9-GAS	5/14/2012	5/25/2012	Michael D. Laflamme	Att. DIV 2-9-GAS	
Division Set 2	Division 2-10-GAS	5/14/2012	5/29/2012	Michael D. Laflamme		
Division Set 2	Division 2-11-GAS	5/14/2012	5/29/2012	Michael D. Laflamme		
Division Set 2	Division 2-12-GAS	5/14/2012	5/25/2012	Michael D. Laflamme	Att. DIV 2-12-GAS	
Division Set 2	Division 2-13-GAS	5/14/2012	5/29/2012	Michael D. Laflamme		
Division Set 2	Division 2-14-GAS	5/14/2012	5/29/2012	Michael D. Laflamme		
Division Set 2	Division 2-15-GAS	5/14/2012	5/29/2012	Michael D. Laflamme		
Division Set 2	Division 2-16-GAS	5/14/2012	5/29/2012	Michael D. Laflamme	Att. DIV 2-16-1-GAS Att. DIV 2-16-2-GAS Att. DIV 2-16-3-GAS	
Division Set 2	Division 2-17-GAS	5/14/2012	5/29/2012	Michael D. Laflamme		
Division Set 2	Division 2-18-GAS	5/14/2012	5/29/2012	Michael D. Laflamme		
Division Set 2	Division 2-19-GAS	5/14/2012	5/29/2012	Michael D. Laflamme		
Division Set 2	Division 2-20-GAS	5/14/2012	5/29/2012	Michael D. Laflamme		
Division Set 2	Division 2-21-GAS	5/14/2012	5/29/2012	Michael D. Laflamme	Att. DIV 2-21-GAS	
Division Set 2	Division 2-22-GAS	5/14/2012	5/29/2012	Michael D. Laflamme	Att. DIV 2-22-GAS	
Division Set 2	Division 2-23-GAS	5/14/2012	5/29/2012	Michael D. Laflamme	Att. DIV 2-23-GAS	
Division Set 2	Division 2-24-GAS	5/14/2012	5/29/2012	Michael D. Laflamme		

The Narragansett Electric Company  
d/b/a National Grid  
R.I.P.U.C. Docket No. 4323  
Discovery Log

DATA SET	DATA REQUEST	DATE ISSUED	DATE FILED	WITNESS	ATTACHMENT	CONFIDENTIAL ATTACHMENT
Division Set 2	Division 2-25-GAS	5/14/2012	5/29/2012	Michael D. Laflamme		
<b>DIVISION SET 3</b>						
Division Set 3	Division 3-1-ELEC/GAS	5/30/2012	6/11/2012	Michael D. Laflamme	Att. DIV 3-1-ELEC/GAS	
Division Set 3	Division 3-2-ELEC/GAS	5/30/2012	6/13/2012	Michael D. Laflamme	Att. DIV 3-2-ELEC/GAS	
Division Set 3	Division 3-3-ELEC/GAS	5/30/2012	6/12/2012	Robert B. Hevert	Att. DIV 3-3-ELEC/GAS	
Division Set 3	Division 3-4-ELEC/GAS	5/30/2012	6/12/2012	Robert B. Hevert		
Division Set 3	Division 3-5-ELEC/GAS	5/30/2012	6/12/2012	Robert B. Hevert	Att. DIV 3-5-ELEC/GAS	
Division Set 3	Division 3-6-ELEC/GAS	5/30/2012	6/13/2012	Michael D. Laflamme	Att. DIV 3-6-ELEC/GAS (REDACTED)	Att. DIV 3-6-ELEC/GAS (CONFIDENTIAL)
Division Set 3	Division 3-7-ELEC/GAS	5/30/2012	6/11/2012	Michael D. Laflamme	Att. DIV 3-7-1-ELEC/GAS Att. DIV 3-7-2-ELEC/GAS Att. DIV 3-7-3-ELEC/GAS	
Division Set 3	Division 3-8-ELEC/GAS	5/30/2012	6/12/2012	Legal Department and Robert B. Hevert		
Division Set 3	Division 3-9-ELEC/GAS	5/30/2012	6/11/2012	Mustally Hussain	Att. DIV 3-9-1-ELEC/GAS Att. DIV 3-9-2-ELEC/GAS Att. DIV 3-9-3-ELEC/GAS Att. DIV 3-9-4-ELEC/GAS Att. DIV 3-9-5-ELEC/GAS Att. DIV 3-9-6-ELEC/GAS Att. DIV 3-9-7-ELEC/GAS Att. DIV 3-9-8-ELEC/GAS Att. DIV 3-9-9-ELEC/GAS	
Division Set 3	Division 3-10-ELEC/GAS	5/30/2012	6/11/2012	Mustally Husain	Att. DIV 3-10-ELEC/GAS	
Division Set 3	Division 3-11-ELEC/GAS	5/30/2012	6/11/2012	Michael D. Laflamme	Att. DIV 3-11-ELEC/GAS	
Division Set 3	Division 3-12-ELEC/GAS	5/30/2012	6/11/2012	Michael D. Laflamme		
Division Set 3	Division 3-13-ELEC/GAS	5/30/2012	6/11/2012	Michael D. Laflamme		
Division Set 3	Division 3-14-ELEC/GAS	5/30/2012	6/13/2012	Michael D. Laflamme		
Division Set 3	Division 3-15-ELEC/GAS	5/30/2012	6/11/2012	Michael D. Laflamme		
Division Set 3	Division 3-16-ELEC/GAS	5/30/2012	6/11/2012	Michael D. Laflamme		
Division Set 3	Division 3-17-ELEC/GAS	5/30/2012	6/11/2012	Michael D. Laflamme	Att. DIV 3-17-ELEC/GAS	
Division Set 3	Division 3-18-ELEC/GAS	5/30/2012	6/12/2012	Robert B. Hevert		
Division Set 3	Division 3-19-ELEC	5/30/2012	6/12/2012	Robert B. Hevert		
Division Set 3	Division 3-20-ELEC/GAS	5/30/2012	6/12/2012	Robert B. Hevert		
Division Set 3	Division 3-21-ELEC/GAS	5/30/2012	6/12/2012	Robert B. Hevert		
Division Set 3	Division 3-22-ELEC/GAS	5/30/2012	6/12/2012	Robert B. Hevert	Att. DIV 3-22-ELEC/GAS	

DATA SET	DATA REQUEST	DATE ISSUED	DATE FILED	WITNESS	ATTACHMENT	CONFIDENTIAL ATTACHMENT
Division Set 3	Division 3-23-ELEC/GAS	5/30/2012	<b>6/12/2012</b>	Robert B. Hevert	Att. DIV 3-23-ELEC/GAS	
Division Set 3	Division 3-24-ELEC/GAS	5/30/2012	<b>6/13/2012</b>	Robert B. Hevert	Att. DIV 3-24-ELEC/GAS	
Division Set 3	Division 3-25-ELEC/GAS	5/30/2012	<b>6/12/2012</b>	Robert B. Hevert	Att. DIV 3-25-ELEC/GAS	
Division Set 3	Division 3-26-ELEC/GAS	5/30/2012	<b>6/12/2012</b>	Robert B. Hevert		
Division Set 3	Division 3-27-ELEC/GAS	5/30/2012	<b>6/12/2012</b>	Robert B. Hevert		
<b>DIVISION SET 4</b>						
Division Set 4	Division 4-1-GAS	6/7/2012	<b>6/29/2012</b>	Paul M. Normand	See Attached Page	See Attached Page
Division Set 4	Division 4-2-GAS	6/7/2012	<b>6/19/2012</b>	Paul M. Normand		
Division Set 4	Division 4-3-GAS	6/7/2012	<b>6/20/2012</b>	Ann E. Leary		
Division Set 4	Division 4-4-GAS	6/7/2012	<b>6/19/2012</b>	Paul M. Normand		
Division Set 4	Division 4-5-GAS	6/7/2012	<b>6/19/2012</b>	Paul M. Normand		
Division Set 4	Division 4-6-GAS	6/7/2012	<b>6/20/2012</b>	Ann E. Leary		
Division Set 4	Division 4-7-GAS	6/7/2012	<b>6/20/2012</b>	Ann E. Leary		
Division Set 4	Division 4-8-GAS	6/7/2012	<b>6/19/2012</b>	Ann E. Leary	Att. DIV 4-8-1-GAS Att. DIV 4-8-2-GAS Att. DIV 4-8-3-GAS Att. DIV 4-8-4-GAS Att. DIV 4-8-5-GAS	
Division Set 4	Division 4-9-GAS	6/7/2012	<b>6/20/2012</b>	Ann E. Leary		
Division Set 4	Division 4-10-GAS	6/7/2012	<b>6/19/2012</b>	Ann E. Leary	Att. DIV 4-10-GAS	
Division Set 4	Division 4-11-GAS	6/7/2012	<b>6/20/2012</b>	Ann E. Leary		
Division Set 4	Division 4-12-GAS	6/7/2012	<b>6/20/2012</b>	Ann E. Leary	Att. DIV 4-12-GAS	
Division Set 4	Division 4-13-GAS	6/7/2012	<b>6/19/2012</b>	Ann E. Leary and Michael D. Laflamme		
<b>DIVISION SET 5</b>						
Division Set 5	Division 5-1-ELEC	6/8/2012	<b>6/26/2012</b>	Evelyn M. Kaye	Att. DIV 5-1-ELEC	
Division Set 5	Division 5-2-ELEC	6/8/2012	<b>6/29/2012</b>	Evelyn M. Kaye	Att. DIV 5-2-1-ELEC Att. DIV 5-2-2-ELEC Att. DIV 5-2-3-ELEC	
Division Set 5	Division 5-3-ELEC	6/8/2012	<b>6/26/2012</b>	Evelyn M. Kaye	Att. DIV 5-3-1-ELEC Att. DIV 5-3-2-ELEC	
Division Set 5	Division 5-3-ELEC (Corrected)	6/8/2012	<b>7/2/2012</b>	Evelyn M. Kaye		

Division Set 4

Division 4-1-GAS

**ATTACHMENT**

**CONFIDENTIAL  
ATTACHMENT**

1-18 Design Winter Sales RATE YEAR Rev 4-2-12.xls

Att DIV 5-12 Meter Cost Detail MAC\_B.xls

Attach 1-2B(Test Year PLT ACCUMDEPR Acct) with Rate Year Adj 4-6.xls

Attach 1-17 with Back-up (CY11\_Charge\_off (W Philibin 02 15 12)).xls

Attach 1-24 (Services Inv Allocator) MAC.xls

Attach 1-26 RATE YEAR (REG ACCNT 903000 CustRecordsColl Exp).xls

Attach 1-27 RATE YEAR (ACCNT 908000 Cust Assistance Exp).xls

Attach 1-29 with backup (6967 RI GAS SALES REPORT DEC11) MAC.xls

Attachment to 1-11 (Rev Proof & Bill Detm)\_A.xls

Bill Impact-(2014 Base Rates and ISR for Rate Year template)\_H AEL\_1.xls

NG RI Design Day Rate Year Rev 3-20-12 (LS).xls

NG RI Gas Rate Design 4-16-12 B PMN - 7.xls

Ngrid No 1-28 (Deposits) (3).docx

RDA & ISR Adj by Rate Class.xls

RI Gas Allocated COS 4-13-12 MAC.xlsx

NGRI-GCOS Rate Year Revised 4-16-12 WITH ISR & RDA Revenues  
PRO.xls

NGRI-GCOS Rate Year Revised 4-16-12 WITH ISR & RDA Revenues  
PRO.xls

(REDACTED)

(CONFIDENTIAL)



DATA SET	DATA REQUEST	DATE ISSUED	DATE FILED	WITNESS	ATTACHMENT	CONFIDENTIAL ATTACHMENT
Division Set 5	Division 5-4-ELEC	6/8/2012	6/22/2012	Evelyn M. Kaye	Att. DIV 5-4-ELEC	
Division Set 5	Division 5-5-ELEC	6/8/2012	6/22/2012	Evelyn M. Kaye	Att. DIV 5-5-1-ELEC Att. DIV 5-5-2-ELEC	
Division Set 5	Division 5-6-ELEC	6/8/2012	6/22/2012	Evelyn M. Kaye	Att. DIV 5-6-1-ELEC Att. DIV 5-6-2-ELEC Att. DIV 5-6-3-ELEC	
Division Set 5	Division 5-7-ELEC	6/8/2012	6/22/2012	Evelyn M. Kaye		
Division Set 5	Division 5-8-ELEC	6/8/2012	6/22/2012	Evelyn M. Kaye		
Division Set 5	Division 5-9-ELEC	6/8/2012	6/26/2012	Evelyn M. Kaye	Att. DIV 5-9-ELEC	
Division Set 5	Division 5-10-ELEC	6/8/2012	6/26/2012	Evelyn M. Kaye	Att. DIV 5-10-1-ELEC Att. DIV 5-10-2-ELEC	
Division Set 5	Division 5-11-ELEC	6/8/2012	6/26/2012	Evelyn M. Kaye	Att. DIV 5-11-1-ELEC Att. DIV 5-11-2-ELEC Att. DIV 5-11-3-ELEC Att. DIV 5-11-4-ELEC	
Division Set 5	Division 5-12-ELEC	6/8/2012	6/26/2012	Evelyn M. Kaye		
Division Set 5	Division 5-13-ELEC	6/8/2012	6/22/2012	Evelyn M. Kaye		
Division Set 5	Division 5-14-ELEC	6/8/2012	6/22/2012	Evelyn M. Kaye	Att. DIV 5-14-ELEC	
Division Set 5	Division 5-15-ELEC	6/8/2012	6/22/2012	Evelyn M. Kaye	Att. DIV 5-15-ELEC	
Division Set 5	Division 5-16-ELEC	6/8/2012	6/29/2012	Evelyn M. Kaye	Att. DIV 5-16-1-ELEC Att. DIV 5-16-2-ELEC Att. DIV 5-16-3-ELEC Att. DIV 5-16-4-ELEC (REDACTED)	Att. DIV 5-16-2-ELEC Att. DIV 5-16-3-ELEC Att. DIV 5-16-4-ELEC (CONFIDENTIAL)
Division Set 5	Division 5-16-ELEC (Supplemental)	6/8/2012	7/20/2012	Evelyn M. Kaye	Att. DIV 5-16-1-ELEC Att. DIV 5-16-2-ELEC Att. DIV 5-16-3-ELEC Att. DIV 5-16-4-ELEC Supplemental (REDACTED)	Att. DIV 5-16-2-ELEC Att. DIV 5-16-3-ELEC Att. DIV 5-16-4-ELEC Supplemental (CONFIDENTIAL)
<b>DIVISION SET 6</b>						
Division Set 6	Division 6-1-GAS	6/8/2012	7/2/2012	Evelyn M. Kaye	Att. DIV 6-1-GAS	
Division Set 6	Division 6-2-GAS	6/8/2012	7/2/2012	Evelyn M. Kaye	Att. DIV 6-2-1-GAS Att. DIV 6-2-2-GAS	
Division Set 6	Division 6-2(d)-GAS (Supplemental)	6/8/2012	7/20/2012	Evelyn M. Kaye	Att. DIV 6-2(d)-GAS (Supplemental)	
Division Set 6	Division 6-3-GAS	6/8/2012	6/26/2012	Evelyn M. Kaye	Att. DIV 6-3-GAS	
Division Set 6	Division 6-3-GAS (Supplemental)	6/8/2012	7/20/2012	Evelyn M. Kaye	Att. DIV 6-3-GAS (Supplemental)	
Division Set 6	Division 6-4-GAS	6/8/2012	6/26/2012	Evelyn M. Kaye	Att. DIV 6-4-1-GAS Att. DIV 6-4-2-GAS	
Division Set 6	Division 6-5-GAS	6/8/2012	6/26/2012	Evelyn M. Kaye	Att. DIV 6-5-GAS	

DATA SET	DATA REQUEST	DATE ISSUED	DATE FILED	WITNESS	ATTACHMENT	CONFIDENTIAL ATTACHMENT
Division Set 6	Division 6-6-GAS	6/8/2012	7/2/2012	Evelyn M. Kaye	Att. DIV 6-6-1-GAS Att. DIV 6-6-2-GAS Att. DIV 6-6-3-GAS (REDACTED)	Att. DIV 6-6-2-GAS Att. DIV 6-6-3-GAS (CONFIDENTIAL)
Division Set 6	Division 6-7-GAS	6/8/2012	6/22/2012	Evelyn M. Kaye		
Division Set 6	Division 6-8-GAS	6/8/2012	6/22/2012	Evelyn M. Kaye		
Division Set 6	Division 6-9-GAS	6/8/2012	6/26/2012	Evelyn M. Kaye		
Division Set 6	Division 6-9-GAS (Supplemental)	6/8/2012	7/20/2012	Evelyn M. Kaye	Att. DIV 6-9-GAS (Supplemental)	
Division Set 6	Division 6-10-GAS	6/8/2012	6/26/2012	Evelyn M. Kaye	Att. DIV 6-10-1-GAS Att. DIV 6-10-2-GAS	
Division Set 6	Division 6-11-GAS	6/8/2012	6/26/2012	Evelyn M. Kaye		
Division Set 6	Division 6-12-GAS	6/8/2012	6/26/2012	Evelyn M. Kaye		
Division Set 6	Division 6-13-GAS	6/8/2012	6/22/2012	Evelyn M. Kaye		
Division Set 6	Division 6-14-GAS	6/8/2012	6/26/2012	Evelyn M. Kaye	Att. DIV 6-14-GAS	
Division Set 6	Division 6-15-GAS	6/8/2012	6/26/2012	Evelyn M. Kaye	Att. DIV 6-15-1-GAS Att. DIV 6-15-2-GAS Att. DIV 6-15-3-GAS	
Division Set 6	Division 6-16-GAS	6/8/2012	7/2/2012	Evelyn M. Kaye	Att. DIV 6-16-1-GAS Att. DIV 6-16-2-GAS Att. DIV 6-16-3-GAS Att. DIV 6-16-4-GAS Att. DIV 6-16-5-GAS (REDACTED)	Att. DIV 6-16-1-GAS Att. DIV 6-16-2-GAS Att. DIV 6-16-3-GAS Att. DIV 6-16-4-GAS Att. DIV 6-16-5-GAS (CONFIDENTIAL)
Division Set 6	Division 6-16-GAS (Supplemental)	6/8/2012	7/23/2012	Evelyn M. Kaye	Att. DIV 6-16-1-GAS Att. DIV 6-16-2-GAS Att. DIV 6-16-3-GAS Att. DIV 6-16-4-GAS Att. DIV 6-16-5-GAS Att. DIV 6-16-6-GAS Att. DIV 6-16-7-GAS Supplemental (REDACTED)	Att. DIV 6-16-1-GAS Att. DIV 6-16-2-GAS Att. DIV 6-16-3-GAS Att. DIV 6-16-4-GAS Att. DIV 6-16-5-GAS Supplemental (CONFIDENTIAL)
Division Set 6	Attachment Division 6-16-4-GAS (Supplemental) (Corrected)	6/8/2012	8/7/2012	Evelyn M. Kaye		Att. DIV 6-16-4-GAS (CONFIDENTIAL)
<b>DIVISION SET 7</b>						
Division Set 7	Division 7-1-GAS	6/12/2012	7/5/2012	Evelyn M. Kaye	Att. DIV 7-1-GAS	
Division Set 7	Division 7-2-ELEC	6/12/2012	7/5/2012	Evelyn M. Kaye	Att. DIV 7-2-GAS	
Division Set 7	Division 7-3-ELEC/GAS	6/12/2012	7/5/2012	Evelyn M. Kaye	Att. DIV 7-3-1-ELEC/GAS Att. DIV 7-3-2-ELEC/GAS Att. DIV 7-3-3-ELEC/GAS	

DATA SET	DATA REQUEST	DATE ISSUED	DATE FILED	WITNESS	ATTACHMENT	CONFIDENTIAL ATTACHMENT
Division Set 7	Division 7-4-ELEC/GAS	6/12/2012	7/5/2012	Evelyn M. Kaye		
Division Set 7	Division 7-5-ELEC/GAS	6/12/2012	6/28/2012	Evelyn M. Kaye	Att. DIV 7-5-ELEC/GAS	
Division Set 7	Division 7-6-ELEC	6/12/2012	6/25/2012	Evelyn M. Kaye		
Division Set 7	Division 7-7-GAS	6/12/2012	6/25/2012	Evelyn M. Kaye		
Division Set 7	Division 7-8-ELEC/GAS	6/12/2012	6/28/2012	Evelyn M. Kaye		
<b>DIVISION SET 8</b>						
Division Set 8	Division 8-1-ELEC	6/14/2012	6/25/2012	Michael D. Laflamme	Att. DIV 8-1-ELEC	
Division Set 8	Division 8-2-ELEC	6/14/2012	6/25/2012	Michael D. Laflamme	Att. DIV 8-2-ELEC	
Division Set 8	Division 8-3-ELEC	6/14/2012	7/3/2012	Michael D. Laflamme	Att. DIV 8-3-ELEC	
Division Set 8	Division 8-4-ELEC	6/14/2012	6/25/2012	Michael D. Laflamme		
Division Set 8	Division 8-5-ELEC	6/14/2012	7/5/2012	Michael D. Laflamme	Att. DIV 8-5-ELEC	
Division Set 8	Division 8-6-ELEC	6/14/2012	7/6/2012	Michael D. Laflamme	Att. DIV 8-6-ELEC	
Division Set 8	Division 8-7-ELEC	6/14/2012	7/12/2012	Maureen P. Heaphy	Att. DIV 8-7-ELEC	
Division Set 8	Division 8-8-ELEC	6/14/2012	6/25/2012	Michael D. Laflamme		
Division Set 8	Division 8-9-ELEC	6/14/2012	6/27/2012	Michael D. Laflamme		
Division Set 8	Division 8-10-ELEC	6/14/2012	6/25/2012	Michael D. Laflamme		
Division Set 8	Division 8-11-ELEC	6/14/2012	6/27/2012	Michael D. Laflamme		
Division Set 8	Division 8-12-ELEC	6/14/2012	6/27/2012	Michael D. Laflamme		
Division Set 8	Division 8-13-ELEC	6/14/2012	7/6/2012	Michael D. Laflamme		
Division Set 8	Division 8-14-ELEC	6/14/2012	6/27/2012	Michael D. Laflamme		
Division Set 8	Division 8-15-ELEC	6/14/2012	6/27/2012	Michael D. Laflamme	Att. DIV 8-15-1-ELEC Att. DIV 8-15-2-ELEC	
Division Set 8	Division 8-16-ELEC	6/14/2012	6/27/2012	Michael D. Laflamme	Att. DIV 8-16-ELEC	
<b>DIVISION SET 9</b>						
Division Set 9	Division 9-1-GAS	6/14/2012	7/2/2012	Michael D. Laflamme		
Division Set 9	Division 9-2-GAS	6/14/2012	7/2/2012	Michael D. Laflamme	Att. DIV 9-2-GAS	
Division Set 9	Division 9-3-GAS	6/14/2012	6/27/2012	Michael D. Laflamme		
Division Set 9	Division 9-4-GAS	6/14/2012	6/27/2012	Michael D. Laflamme & Susan L. Fleck		
Division Set 9	Division 9-5-GAS	6/14/2012	6/27/2012	A. Leo Silvestrini		
Division Set 9	Division 9-6-GAS	6/14/2012	6/27/2012	A. Leo Silvestrini	Att. DIV 9-6-GAS	

The Narragansett Electric Company  
d/b/a National Grid  
R.I.P.U.C. Docket No. 4323  
Discovery Log

<b>DATA SET</b>	<b>DATA REQUEST</b>	<b>DATE ISSUED</b>	<b>DATE FILED</b>	<b>WITNESS</b>	<b>ATTACHMENT</b>	<b>CONFIDENTIAL ATTACHMENT</b>
Division Set 9	Division 9-7-GAS	6/14/2012	<b>6/27/2012</b>	A. Leo Silvestrini		
Division Set 9	Division 9-8-GAS	6/14/2012	<b>6/27/2012</b>	A. Leo Silvestrini	Att. DIV 9-8-GAS	
Division Set 9	Division 9-9-GAS	6/14/2012	<b>6/27/2012</b>	A. Leo Silvestrini		

DATA SET	DATA REQUEST	DATE ISSUED	DATE FILED	WITNESS	ATTACHMENT	CONFIDENTIAL ATTACHMENT
<b>DIVISION SET 10</b>						
Division Set 10	Division 10-1-ELEC	6/22/2012	<b>7/3/2012</b>	Howard S. Gorman	Att. DIV 10-1-1-ELEC Att. DIV 10-1-2-ELEC	
Division Set 10	Division 10-2-ELEC	6/22/2012	<b>7/3/2012</b>	Jeanne A. Lloyd	Att. DIV 10-2-1-ELEC Att. DIV 10-2-2-ELEC Att. DIV 10-2-3-ELEC Att. DIV 10-2-4-ELEC Att. DIV 10-2-5(1)-ELEC to Att. DIV 10-2-5(11)-ELEC Att. DIV 10-2-3-ELEC	
Division Set 10	Division 10-3-ELEC	6/22/2012	<b>7/5/2012</b>	Evelyn M. Kaye	Att. DIV 10-3-1-ELEC Att. DIV 10-3-2-ELEC	
Division Set 10	Division 10-4-ELEC	6/22/2012	<b>7/3/2012</b>	Alfred P. Morrissey	Att. DIV 10-4-ELEC	
Division Set 10	Division 10-5-ELEC	6/22/2012	<b>7/5/2012</b>	Howard S. Gorman	Att. DIV 10-5-ELEC	
Division Set 10	Division 10-6-ELEC	6/22/2012	<b>6/28/2012</b>	Howard S. Gorman		
Division Set 10	Division 10-7-ELEC	6/22/2012	<b>6/28/2012</b>	Howard S. Gorman	Att. DIV 10-7-ELEC	
Division Set 10	Division 10-8-ELEC	6/22/2012	<b>6/28/2012</b>	Howard S. Gorman		
<b>DIVISION SET 11</b>						
Division Set 11	Division 11-1-ELEC/GAS	6/25/2012	<b>7/13/2012</b>	Michael D. Laflamme	Att. DIV 11-1-1-ELEC/GAS Att. DIV 11-1-2-ELEC/GAS	
Division Set 11	Division 11-2-ELEC/GAS	6/25/2012	<b>7/6/2012</b>	Maureen P. Heaphy		
Division Set 11	Division 11-3-ELEC/GAS	6/25/2012	<b>7/6/2012</b>	Maureen P. Heaphy		
Division Set 11	Division 11-4-ELEC/GAS	6/25/2012	<b>7/13/2012</b>	Michael D. Laflamme	Att. DIV 11-4-ELEC/GAS	
Division Set 11	Division 11-5-ELEC/GAS	6/25/2012	<b>7/10/2012</b>	Michael D. Laflamme		
Division Set 11	Division 11-6-ELEC/GAS	6/25/2012	<b>7/13/2012</b>	Michael D. Laflamme	Att. DIV 11-6-1-ELEC/GAS Att. DIV 11-6-2-ELEC/GAS	
Division Set 11	Division 11-7-ELEC/GAS	6/25/2012	<b>7/13/2012</b>	Michael D. Laflamme	Att. DIV 11-7-ELEC/GAS	
Division Set 11	Division 11-8-ELEC/GAS	6/25/2012	<b>7/13/2012</b>	Michael D. Laflamme	Att. DIV 11-8-1-ELEC/GAS Att. DIV 11-8-2-ELEC/GAS Att. DIV 11-8-3-ELEC/GAS Att. DIV 11-8-4-ELEC/GAS Att. DIV 11-8-5-ELEC/GAS	
Division Set 11	Division 11-9-ELEC/GAS	6/25/2012	<b>7/12/2012</b>	Michael D. Laflamme	Att. DIV 11-9-ELEC/GAS	
Division Set 11	Division 11-10-ELEC/GAS	6/25/2012	<b>7/12/2012</b>	Michael D. Laflamme		
Division Set 11	Division 11-11-ELEC/GAS	6/25/2012	<b>7/10/2012</b>	Michael D. Laflamme	Att. DIV 11-11-ELEC/GAS	
Division Set 11	Division 11-12-ELEC/GAS	6/25/2012	<b>7/6/2012</b>	Michael D. Laflamme	Att. DIV 11-12-ELEC/GAS	
Division Set 11	Division 11-13-ELEC/GAS	6/25/2012	<b>7/6/2012</b>	Michael D. Laflamme		
Division Set 11	Division 11-14-ELEC/GAS	6/25/2012	<b>7/12/2012</b>	Michael D. Laflamme	Att. DIV 11-14-ELEC/GAS	
Division Set 11	Division 11-15-ELEC/GAS	6/25/2012	<b>7/6/2012</b>	Michael D. Laflamme		
Division Set 11	Division 11-16-ELEC/GAS	6/25/2012	<b>7/10/2012</b>	Michael D. Laflamme		

DATA SET	DATA REQUEST	DATE ISSUED	DATE FILED	WITNESS	ATTACHMENT	CONFIDENTIAL ATTACHMENT
Division Set 11	Division 11-17-ELEC/GAS	6/25/2012	<b>7/13/2012</b>	Michael D. Laflamme		
Division Set 11	Division 11-18-ELEC/GAS	6/25/2012	<b>7/12/2012</b>	Michael D. Laflamme	Att. DIV 11-18-ELEC/GAS	
Division Set 11	Division 11-19-ELEC/GAS	6/25/2012	<b>7/13/2012</b>	Michael D. Laflamme	Att. DIV 11-19-ELEC/GAS	
Division Set 11	Division 11-20-ELEC/GAS	6/25/2012	<b>7/12/2012</b>	Michael D. Laflamme	Att. DIV 11-20-ELEC/GAS	
Division Set 11	Division 11-21-ELEC/GAS	6/25/2012	<b>7/13/2012</b>	Michael D. Laflamme		
Division Set 11	Division 11-22-ELEC/GAS	6/25/2012	<b>7/6/2012</b>	Michael D. Laflamme		
Division Set 11	Division 11-23-ELEC/GAS	6/25/2012	<b>7/6/2012</b>	Michael D. Laflamme		
Division Set 11	Division 11-24-ELEC/GAS	6/25/2012	<b>7/6/2012</b>	Michael D. Laflamme		
Division Set 11	Division 11-25-ELEC/GAS	6/25/2012	<b>7/6/2012</b>	Michael D. Laflamme		
Division Set 11	Division 11-26-ELEC/GAS	6/25/2012	<b>7/6/2012</b>	Michael D. Laflamme		
<b>DIVISION SET 12</b>						
Division Set 12	Division 12-1-GAS	6/28/2012	<b>7/10/2012</b>	A. Leo Silvestrini	Att. DIV 12-1-GAS	
Division Set 12	Division 12-2-GAS	6/28/2012	<b>7/6/2012</b>	A. Leo Silvestrini	Att. DIV 12-2-GAS	
Division Set 12	Division 12-3-GAS	6/28/2012	<b>7/10/2012</b>	A. Leo Silvestrini	Att. DIV 12-3-1-GAS Att. DIV 12-3-2-GAS	
Division Set 12	Division 12-4-GAS	6/28/2012	<b>7/10/2012</b>	A. Leo Silvestrini		
Division Set 12	Division 12-5-GAS	6/28/2012	<b>7/10/2012</b>	A. Leo Silvestrini		
Division Set 12	Division 12-6-GAS	6/28/2012	<b>7/6/2012</b>	A. Leo Silvestrini		
Division Set 12	Division 12-7-GAS	6/28/2012	<b>7/10/2012</b>	A. Leo Silvestrini		
Division Set 12	Division 12-8-GAS	6/28/2012	<b>7/6/2012</b>	A. Leo Silvestrini	Att. DIV 12-8-GAS	
Division Set 12	Division 12-9-GAS	6/28/2012	<b>7/10/2012</b>	A. Leo Silvestrini		
Division Set 12	Division 12-10-GAS	6/28/2012	<b>7/10/2012</b>	A. Leo Silvestrini	Att. DIV 12-10-1-GAS Att. DIV 12-10-2-GAS Att. DIV 12-10-3-GAS	
Division Set 12	Division 12-11-GAS	6/28/2012	<b>7/6/2012</b>	A. Leo Silvestrini		
Division Set 12	Division 12-12-GAS	6/28/2012	<b>7/10/2012</b>	A. Leo Silvestrini		
Division Set 12	Division 12-13-GAS	6/28/2012	<b>7/13/2012</b>	A. Leo Silvestrini	Att. DIV 12-13-GAS	
Division Set 12	Division 12-14-GAS	6/28/2012	<b>7/6/2012</b>	A. Leo Silvestrini		
Division Set 12	Division 12-15-GAS	6/28/2012	<b>7/6/2012</b>	A. Leo Silvestrini		
Division Set 12	Division 12-16-GAS	6/28/2012	<b>7/10/2012</b>	A. Leo Silvestrini		
Division Set 12	Division 12-17-GAS	6/28/2012	<b>7/10/2012</b>	A. Leo Silvestrini	Att. DIV 12-17-GAS	

DATA SET	DATA REQUEST	DATE ISSUED	DATE FILED	WITNESS	ATTACHMENT	CONFIDENTIAL ATTACHMENT
Division Set 12	Division 12-18-GAS	6/28/2012	<b>7/13/2012</b>	A. Leo Silvestrini	Att. DIV 12-18-GAS	
Division Set 12	Division 12-19-GAS	6/28/2012	<b>7/13/2012</b>	A. Leo Silvestrini		
Division Set 12	Division 12-20-GAS	6/28/2012	<b>7/10/2012</b>	A. Leo Silvestrini		
Division Set 12	Division 12-21-GAS	6/28/2012	<b>7/10/2012</b>	A. Leo Silvestrini		
Division Set 12	Division 12-22-GAS	6/28/2012	<b>7/6/2012</b>	A. Leo Silvestrini		
Division Set 12	Division 12-23-GAS	6/28/2012	<b>7/6/2012</b>	A. Leo Silvestrini	Att. DIV 12-23-1-GAS Att. DIV 12-23-2-GAS	
Division Set 12	Division 12-24-GAS	6/28/2012	<b>7/13/2012</b>	A. Leo Silvestrini	Att. DIV 12-24-1-GAS Att. DIV 12-24-2-GAS Att. DIV 12-24-3-GAS	
Division Set 12	Division 12-25-GAS	6/28/2012	<b>7/13/2012</b>	A. Leo Silvestrini		
Division Set 12	Division 12-26-GAS	6/28/2012	<b>7/13/2012</b>	A. Leo Silvestrini		
Division Set 12	Division 12-27-GAS	6/28/2012	<b>7/13/2012</b>	Ann E. Leary	Att. DIV 12-27-GAS	
Division Set 12	Division 12-28-GAS	6/28/2012	<b>7/13/2012</b>	Ann E. Leary	Att. DIV 12-28-GAS	
Division Set 12	Division 12-29-GAS	6/28/2012	<b>7/10/2012</b>	Ann E. Leary		
Division Set 12	Division 12-30-GAS	6/28/2012	<b>7/10/2012</b>	Ann E. Leary		
<b>DIVISION SET 13</b>						
Division Set 13	Division 13-1-GAS	7/11/2012	<b>7/23/2012</b>	Paul M. Normand		
Division Set 13	Division 13-2-GAS	7/11/2012	<b>7/24/2012</b>	Paul M. Normand	Att. DIV 13-2-1-GAS Att. DIV 13-2-2-GAS Att. DIV 13-2-3-GAS Att. DIV 13-2-4-GAS Att. DIV 13-2-5-GAS Att. DIV 13-2-6-GAS Att. DIV 13-2-7-GAS	
Division Set 13	Division 13-3-GAS	7/11/2012	<b>7/23/2012</b>	Paul M. Normand		
Division Set 13	Division 13-4-GAS	7/11/2012	<b>7/23/2012</b>	Ann E. Leary	Att. DIV 13-4-GAS	
Division Set 13	Division 13-5-GAS	7/11/2012	<b>7/23/2012</b>	Paul M. Normand		
Division Set 13	Division 13-6-GAS	7/11/2012	<b>7/23/2012</b>	Ann E. Leary		
Division Set 13	Division 13-7-GAS	7/11/2012	<b>7/23/2012</b>	Ann E. Leary		
Division Set 13	Division 13-8-GAS	7/11/2012	<b>7/16/2012</b>	A. Leo Silvestrini		
Division Set 13	Division 13-9-GAS	7/11/2012	<b>7/17/2012</b>	A. Leo Silvestrini		
Division Set 13	Division 13-10-GAS	7/11/2012	<b>7/17/2012</b>	A. Leo Silvestrini		
Division Set 13	Division 13-11-GAS	7/11/2012	<b>7/17/2012</b>	A. Leo Silvestrini		
Division Set 13	Division 13-12-GAS	7/11/2012	<b>7/17/2012</b>	A. Leo Silvestrini		
Division Set 13	Division 13-13-GAS	7/11/2012	<b>7/17/2012</b>	A. Leo Silvestrini		

DATA SET	DATA REQUEST	DATE ISSUED	DATE FILED	WITNESS	ATTACHMENT	CONFIDENTIAL ATTACHMENT
<b>DIVISION SET 14</b>						
Division Set 14	Division 14-1-GAS	7/11/2012	<b>7/23/2012</b>	Evelyn M. Kaye		
Division Set 14	Division 14-2-GAS	7/11/2012	<b>7/23/2012</b>	Evelyn M. Kaye		
Division Set 14	Division 14-3-GAS	7/11/2012	<b>7/23/2012</b>	Evelyn M. Kaye		
Division Set 14	Division 14-4-GAS	7/11/2012	<b>7/23/2012</b>	Evelyn M. Kaye		
Division Set 14	Division 14-5-GAS (Redacted)	7/11/2012	<b>7/24/2012</b>	Evelyn M. Kaye		
Division Set 14	Division 14-5-GAS (Confidential)	7/11/2012	<b>7/24/2012</b>	Evelyn M. Kaye		
Division Set 14	Division 14-6-GAS	7/11/2012	<b>7/23/2012</b>	Evelyn M. Kaye		
Division Set 14	Division 14-7-GAS	7/11/2012	<b>7/23/2012</b>	Evelyn M. Kaye		
Division Set 14	Division 14-8-GAS	7/11/2012	<b>7/23/2012</b>	Evelyn M. Kaye		
Division Set 14	Division 14-9-GAS	7/11/2012	<b>7/23/2012</b>	Evelyn M. Kaye		
Division Set 14	Division 14-10-GAS	7/11/2012	<b>7/23/2012</b>	Evelyn M. Kaye		
Division Set 14	Division 14-11-GAS	7/11/2012	<b>7/23/2012</b>	Evelyn M. Kaye		
Division Set 14	Division 14-12-GAS (Redacted)	7/11/2012	<b>7/24/2012</b>	Evelyn M. Kaye	Att. DIV 14-12-GAS	
Division Set 14	Division 14-12-GAS (Confidential)	7/11/2012	<b>7/24/2012</b>	Evelyn M. Kaye		
Division Set 14	Division 14-13-GAS (Redacted)	7/11/2012	<b>7/24/2012</b>	Evelyn M. Kaye		
Division Set 14	Division 14-13-GAS (Confidential)	7/11/2012	<b>7/24/2012</b>	Evelyn M. Kaye		
<b>DIVISION SET 15</b>						
Division Set 15	Division 15-1-ELEC	7/17/2012	<b>7/26/2012</b>	Michael D. Laflamme	Att. DIV 15-1-ELEC	
Division Set 15	Division 15-2-ELEC	7/17/2012	<b>7/26/2012</b>	Michael D. Laflamme		
Division Set 15	Division 15-3-ELEC	7/17/2012	<b>7/24/2012</b>	Michael D. Laflamme	Att. DIV 15-13-ELEC	
Division Set 15	Division 15-4-ELEC	7/17/2012	<b>7/24/2012</b>	Michael D. Laflamme		
Division Set 15	Division 15-5-ELEC	7/17/2012	<b>7/24/2012</b>	Michael D. Laflamme		
Division Set 15	Division 15-6-ELEC	7/17/2012	<b>7/24/2012</b>	Michael D. Laflamme		
Division Set 15	Division 15-7-ELEC	7/17/2012	<b>7/24/2012</b>	Michael D. Laflamme		
Division Set 15	Division 15-8-ELEC	7/17/2012	<b>7/24/2012</b>	Michael D. Laflamme		
Division Set 15	Division 15-9-ELEC	7/17/2012	<b>7/26/2012</b>	Michael D. Laflamme		
Division Set 15	Division 15-10-ELEC	7/17/2012	<b>7/26/2012</b>	Michael D. Laflamme		
Division Set 15	Division 15-11-ELEC	7/17/2012	<b>7/24/2012</b>	Michael D. Laflamme		



DATA SET	DATA REQUEST	DATE ISSUED	DATE FILED	WITNESS	ATTACHMENT	CONFIDENTIAL ATTACHMENT
Division Set 15	Division 15-12-ELEC	7/17/2012	8/7/2012	Maureen P. Heaphy & Michael D. Laflamme	Att. DIV 15-12-ELEC	
Division Set 15	Division 15-13-ELEC	7/17/2012	7/24/2012	Michael D. Laflamme	Att. DIV 15-13-ELEC	
Division Set 15	Division 15-14-ELEC	7/17/2012	7/26/2012	Michael D. Laflamme		
Division Set 15	Division 15-15-ELEC	7/17/2012	7/26/2012	Michael D. Laflamme	Att. DIV 15-15-ELEC	
<b>DIVISION SET 16</b>						
Division Set 16	Division 16-1-GAS	7/17/2012	7/26/2012	Michael D. Laflamme	Att. DIV 16-1-GAS	
Division Set 16	Division 16-2-GAS	7/17/2012	7/26/2012	Michael D. Laflamme	Att. DIV 16-2-GAS	
Division Set 16	Division 16-3-GAS	7/17/2012	7/26/2012	Michael D. Laflamme		
Division Set 16	Division 16-4-GAS	7/17/2012	7/31/2012	Ann E. Leary	Att. DIV 16-4-GAS	
Division Set 16	Division 16-5-GAS	7/17/2012	7/24/2012	A. Leo Silvestrini	Att. DIV 16-5-GAS	
<b>DIVISION SET 17</b>						
Division Set 17	Division 17-1-ELEC	7/17/2012	7/27/2012	Howard S. Gorman		
Division Set 17	Division 17-2-ELEC	7/17/2012	7/30/2012	Alfred P. Morrissey and Jeanne A. Lloyd	Att. DIV 17-2-1-ELEC Att. DIV 17-2-2-ELEC Att. DIV 17-2-3-ELEC Att. DIV 17-2-4-ELEC	
Division Set 17	Division 17-3-ELEC	7/17/2012	7/26/2012	Howard S. Gorman		
Division Set 17	Division 17-4-ELEC	7/17/2012	7/30/2012	Jeanne A. Lloyd	Att. DIV 17-4-ELEC	
Division Set 17	Division 17-5-ELEC	7/17/2012	7/26/2012	Jeanne A. Lloyd		
<b>DIVISION SET 18</b>						
Division Set 18	Division 18-1-ELEC	7/20/2012	7/26/2012	Evelyn M. Kaye	Att. DIV 18-1-ELEC	
Division Set 18	Division 18-2-ELEC	7/20/2012	7/26/2012	Evelyn M. Kaye		
Division Set 18	Division 18-3-ELEC	7/20/2012	7/27/2012	Evelyn M. Kaye		
Division Set 18	Division 18-4-ELEC	7/20/2012	8/2/2012	Evelyn M. Kaye	Att. DIV 18-4-1-ELEC Att. DIV 18-4-2-ELEC Att. DIV 18-4-3-ELEC Att. DIV 18-4-4-ELEC Att. DIV 18-4-5-ELEC	
Division Set 18	Division 18-5-ELEC	7/20/2012	7/30/2012	Evelyn M. Kaye		
Division Set 18	Division 18-6-ELEC	7/20/2012	8/2/2012	Evelyn M. Kaye	Att. DIV 18-6-1-ELEC Att. DIV 18-6-2-ELEC Att. DIV 18-6-3-ELEC Att. DIV 18-6-4-ELEC	
<b>DIVISION SET 19</b>						
Division Set 19	Division 19-1-ELEC/GAS	7/25/2012	8/8/2012	Michael D. Laflamme	Att. DIV 19-1-ELEC/GAS	
Division Set 19	Division 19-2-ELEC/GAS	7/25/2012	8/2/2012	Michael D. Laflamme		

DATA SET	DATA REQUEST	DATE ISSUED	DATE FILED	WITNESS	ATTACHMENT	CONFIDENTIAL ATTACHMENT
Division Set 19	Division 19-3-ELEC/GAS	7/25/2012	8/2/2012	Michael D. Laflamme		
Division Set 19	Division 19-4-ELEC/GAS	7/25/2012	8/2/2012	Michael D. Laflamme		
Division Set 19	Division 19-5-ELEC/GAS	7/25/2012	8/2/2012	Michael D. Laflamme		
Division Set 19	Division 19-6-ELEC/GAS	7/25/2012	8/8/2012	Michael D. Laflamme	Att. DIV 19-6-ELEC/GAS	
Division Set 19	Division 19-7-ELEC/GAS	7/25/2012	7/30/2012	Maureen P. Heaphy	Att. DIV 19-7-ELEC/GAS	
Division Set 19	Division 19-8-ELEC/GAS	7/25/2012	7/30/2012	Maureen P. Heaphy		
Division Set 19	Division 19-9-ELEC/GAS	7/25/2012	8/8/2012	Michael D. Laflamme	Att. DIV 19-9-ELEC/GAS	
<b>DIVISION SET 20</b>						
Division Set 20	Division 20-1-ELEC	7/27/2012	8/9/2012	Evelyn M. Kaye	Att. DIV 20-1-1-ELEC Att. DIV 20-1-2-ELEC Att. DIV 20-1-3-ELEC (REDACTED)	Att. DIV 20-1-1-ELEC Att. DIV 20-1-2-ELEC Att. DIV 20-1-3-ELEC (CONFIDENTIAL)
Division Set 20	Division 20-2-ELEC (Redacted)	7/27/2012	8/9/2012	Evelyn M. Kaye		
Division Set 20	Division 20-2-ELEC (Confidential)	7/27/2012	8/9/2012	Evelyn M. Kaye		
Division Set 20	Division 20-3-ELEC	7/27/2012	8/9/2012	Evelyn M. Kaye		
<b>DIVISION SET 21</b>						
Division Set 21	Division 21-1-ELEC	8/1/2012	8/7/2012	Howard S. Gorman		
Division Set 21	Division 21-2-ELEC	8/1/2012	8/10/2012	Jeanne A. Lloyd		
Division Set 21	Division 21-3-ELEC	8/1/2012	8/10/2012	Jeanne A. Lloyd		
Division Set 21	Division 21-4-ELEC	8/1/2012	8/10/2012	Howard S. Gorman		
Division Set 21	Division 21-4(d)-ELEC (Supp.)	8/1/2012	8/24/2012	Howard S. Gorman & Jeanne A. Lloyd	Att. DIV 21-4 (d)-ELEC (Supp.)	
Division Set 21	Division 21-5-ELEC	8/1/2012	8/10/2012	Howard S. Gorman		
Division Set 21	Division 21-6-ELEC	8/1/2012	8/10/2012	Howard S. Gorman		
<b>DIVISION SET 22</b>						
Division Set 22	Division 22-1-GAS	8/3/2012	8/15/2012	Evelyn M. Kaye		
Division Set 22	Division 22-2-GAS	8/3/2012	8/13/2012	Evelyn M. Kaye	Att. DIV 22-2-1-GAS Att. DIV 22-2-2-GAS	
Division Set 22	Division 22-3-GAS	8/3/2012	8/7/2012	Evelyn M. Kaye		
Division Set 22	Division 22-4-ELEC	8/3/2012	8/16/2012	Evelyn M. Kaye	Att. DIV 22-4-ELEC	
Division Set 22	Division 22-5-GAS	8/3/2012	8/15/2012	Evelyn M. Kaye		
Division Set 22	Division 22-6-GAS	8/3/2012	8/15/2012	Evelyn M. Kaye		
Division Set 22	Division 22-7-GAS	8/3/2012	8/21/2012	Michael D. Laflamme		

DATA SET	DATA REQUEST	DATE ISSUED	DATE FILED	WITNESS	ATTACHMENT	CONFIDENTIAL ATTACHMENT
<b>DIVISION SET 23</b>						
Division Set 23	Division 23-1-ELEC/GAS	8/7/2012	<b>8/13/2012</b>	Michael D. Laflamme		
Division Set 23	Division 23-2-ELEC/GAS	8/7/2012	<b>8/14/2012</b>	Michael D. Laflamme		
Division Set 23	Division 23-3-ELEC/GAS	8/7/2012	<b>8/14/2012</b>	Michael D. Laflamme	Att. DIV 23-3-ELEC/GAS	
Division Set 23	Division 23-4-ELEC/GAS	8/7/2012	<b>8/14/2012</b>	Michael D. Laflamme	Att. DIV 23-4-ELEC/GAS	
Division Set 23	Division 23-5-ELEC/GAS	8/7/2012	<b>8/21/2012</b>	Michael D. Laflamme & Robert B. Hevert	Att. DIV 23-5-ELEC/GAS	
Division Set 23	Division 23-6-ELEC/GAS	8/7/2012	<b>8/14/2012</b>	Michael D. Laflamme		
Division Set 23	Division 23-7-ELEC/GAS	8/7/2012	<b>8/21/2012</b>	Robert B. Hevert & Michael D. Laflamme	Att. DIV 23-7-1-ELEC/GAS Att. DIV 23-7-2-ELEC/GAS	
Division Set 23	Division 23-8-ELEC/GAS	8/7/2012	<b>8/14/2012</b>	Robert B. Hevert		
Division Set 23	Division 23-9-ELEC/GAS	8/7/2012	<b>8/15/2012</b>	Robert B. Hevert	Att. DIV 23-9-ELEC/GAS	
<b>DIVISION SET 24</b>						
Division Set 24	Division 24-1-GAS (Redacted)	8/7/2012	<b>8/23/2012</b>	Evelyn M. Kaye		
Division Set 24	Division 24-1-GAS (Confidential)	8/7/2012	<b>8/23/2012</b>	Evelyn M. Kaye		
<b>DIVISION SET 25</b>						
Division Set 25	Division 25-1-GAS	8/9/2012	<b>8/20/2012</b>	Ann E. Leary		
Division Set 25	Division 25-2-GAS	8/9/2012	<b>8/20/2012</b>	Ann E. Leary		
Division Set 25	Division 25-3-GAS	8/9/2012	<b>8/20/2012</b>	Paul M. Normand		

The Narragansett Electric Company  
d/b/a National Grid  
R.I.P.U.C. Docket No. 4323  
Discovery Log

DATA SET	DATA REQUEST	DATE ISSUED	DATE FILED	WITNESS	ATTACHMENT	CONFIDENTIAL ATTACHMENT
<b>COMMISSION SET 1</b>						
Commission Set 1	Commission 1-1-ELEC/GAS	5/24/2012	6/6/2012	Michael D. Laflamme		
Commission Set 1	Commission 1-2-ELEC/GAS	5/24/2012	6/7/2012	Maureen P. Heaphy		
Commission Set 1	Commission 1-3-ELEC/GAS	5/24/2012	6/7/2012	Michael D. Laflamme	Att. COMM 1-3-1-ELEC/GAS Att. COMM 1-3-2-ELEC/GAS	
Commission Set 1	Commission 1-4-ELEC/GAS	5/24/2012	6/7/2012	Timothy D. Horan		
Commission Set 1	Commission 1-5-ELEC/GAS	5/24/2012	6/6/2012	Maureen P. Heaphy		
Commission Set 1	Commission 1-6-ELEC	5/24/2012	6/7/2012	Stephen F. Doucette and Maureen P. Heaphy		
Commission Set 1	Commission 1-7-ELEC	5/24/2012	6/7/2012	Stephen F. Doucette and Maureen P. Heaphy		
Commission Set 1	Commission 1-8-ELEC	5/24/2012	6/6/2012	Stephen F. Doucette		
Commission Set 1	Commission 1-9-ELEC	5/24/2012	6/7/2012	Stephen F. Doucette and Maureen P. Heaphy		
Commission Set 1	Commission 1-10-ELEC	5/24/2012	6/6/2012	Stephen F. Doucette		
Commission Set 1	Commission 1-11-ELEC	5/24/2012	6/6/2012	Stephen F. Doucette		
Commission Set 1	Commission 1-12-ELEC	5/24/2012	6/6/2012	Stephen F. Doucette		
Commission Set 1	Commission 1-13-ELEC/GAS	5/24/2012	6/4/2012	Evelyn M. Kaye		
Commission Set 1	Commission 1-14-ELEC/GAS	5/24/2012	6/4/2012	Evelyn M. Kaye		
Commission Set 1	Commission 1-15-ELEC/GAS	5/24/2012	6/6/2012	Evelyn M. Kaye		
Commission Set 1	Commission 1-16-ELEC/GAS	5/24/2012	6/4/2012	Evelyn M. Kaye and Michael D. Laflamme		
Commission Set 1	Commission 1-17-ELEC/GAS	5/24/2012	6/4/2012	Evelyn M. Kaye		
Commission Set 1	Commission 1-18-ELEC/GAS	5/24/2012	6/4/2012	Evelyn M. Kaye		
Commission Set 1	Commission 1-19-ELEC/GAS	5/24/2012	6/4/2012	Evelyn M. Kaye	Att. COMM 1-19-ELEC/GAS	
Commission Set 1	Commission 1-20-ELEC	5/24/2012	6/6/2012	Michael R. Hrycin	Att. COMM 1-20-1-ELEC Att. COMM 1-20-2-ELEC	
Commission Set 1	Commission 1-21-ELEC	5/24/2012	6/6/2012	Michael R. Hrycin	Att. COMM 1-21-ELEC	
Commission Set 1	Commission 1-22-ELEC	5/24/2012	6/6/2012	Michael R. Hrycin	Att. COMM 1-22-ELEC	
Commission Set 1	Commission 1-23-ELEC	5/24/2012	6/7/2012	Michael R. Hrycin		
Commission Set 1	Commission 1-24-ELEC	5/24/2012	6/7/2012	Michael R. Hrycin		
Commission Set 1	Commission 1-25-ELEC	5/24/2012	6/6/2012	Michael R. Hrycin		
Commission Set 1	Commission 1-26-ELEC	5/24/2012	6/6/2012	Michael R. Hrycin		
Commission Set 1	Commission 1-27-GAS	5/24/2012	6/6/2012	Jeffrey P. Martin		
Commission Set 1	Commission 1-28-GAS	5/24/2012	6/6/2012	Jeffrey P. Martin		
Commission Set 1	Commission 1-29-ELEC	5/24/2012	6/4/2012	Alfred P. Morrissey		
Commission Set 1	Commission 1-30-ELEC	5/24/2012	6/4/2012	Alfred P. Morrissey		

The Narragansett Electric Company  
d/b/a National Grid  
R.I.P.U.C. Docket No. 4323  
Discovery Log

DATA SET	DATA REQUEST	DATE ISSUED	DATE FILED	WITNESS	ATTACHMENT	CONFIDENTIAL ATTACHMENT
Commission Set 1	Commission 1-31-ELEC	5/24/2012	6/4/2012	Alfred P. Morrissey		
Commission Set 1	Commission 1-32-ELEC	5/24/2012	6/4/2012	Alfred P. Morrissey		
Commission Set 1	Commission 1-33-ELEC	5/24/2012	6/7/2012	Alfred P. Morrissey		
Commission Set 1	Commission 1-34-ELEC	5/24/2012	6/7/2012	Alfred P. Morrissey		
Commission Set 1	Commission 1-35-ELEC/GAS	5/24/2012	6/6/2012	Michael D. Laflamme		
Commission Set 1	Commission 1-36-ELEC/GAS	5/24/2012	6/7/2012	Michael D. Laflamme	Att. COMM 1-36-ELEC/GAS	
Commission Set 1	Commission 1-37-GAS	5/24/2012	6/7/2012	Michael D. Laflamme		
Commission Set 1	Commission 1-38-ELEC	5/24/2012	6/6/2012	Michael D. Laflamme		
Commission Set 1	Commission 1-39-ELEC/GAS	5/24/2012	6/7/2012	Michael D. Laflamme		
Commission Set 1	Commission 1-40-ELEC/GAS	5/24/2012	6/7/2012	Ann E. Leary & Jeanne Lloyd	Att. COMM 1-40-ELEC/GAS	
Commission Set 1	Commission 1-41-ELEC/GAS	5/24/2012	6/6/2012	Robert B. Hevert		
Commission Set 1	Commission 1-42-ELEC/GAS	5/24/2012	6/6/2012	Michael D. Laflamme		
Commission Set 1	Commission 1-43-ELEC/GAS	5/24/2012	6/6/2012	Michael D. Laflamme		
Commission Set 1	Commission 1-44-ELEC/GAS	5/24/2012	6/7/2012	Maureen P. Heaphy	Att. COMM 1-44-ELEC/GAS	
Commission Set 1	Commission 1-45-ELEC/GAS	5/24/2012	6/6/2012	Stephen F. Doucette		
Commission Set 1	Commission 1-46-GAS	5/24/2012	6/7/2012	Ann E. Leary		
<b>COMMISSION SET 2</b>						
Commission Set 2	Commission 2-1-ELEC/GAS	7/10/2012	7/24/2012	Maureen P. Heaphy	Att. COMM 2-1-ELEC/GAS	
Commission Set 2	Commission 2-2-ELEC/GAS	7/10/2012	7/19/2012	Maureen P. Heaphy		
Commission Set 2	Commission 2-3-ELEC/GAS	7/10/2012	7/23/2012	Maureen P. Heaphy		
Commission Set 2	Commission 2-4-ELEC/GAS	7/10/2012	7/23/2012	Maureen P. Heaphy		
Commission Set 2	Commission 2-5-ELEC/GAS	7/10/2012	7/19/2012	Maureen P. Heaphy		
Commission Set 2	Commission 2-6-ELEC/GAS	7/10/2012	7/24/2012	Maureen P. Heaphy		
Commission Set 2	Commission 2-7-ELEC/GAS	7/10/2012	7/19/2012	Maureen P. Heaphy		
Commission Set 2	Commission 2-8-ELEC/GAS	7/10/2012	7/24/2012	Maureen P. Heaphy	Att. COMM 2-8-ELEC/GAS	
Commission Set 2	Commission 2-9-ELEC/GAS	7/10/2012	7/20/2012	Maureen P. Heaphy		
Commission Set 2	Commission 2-10-ELEC/GAS	7/10/2012	7/24/2012	Maureen P. Heaphy		
Commission Set 2	Commission 2-11-ELEC/GAS	7/10/2012	7/19/2012	Maureen P. Heaphy		
Commission Set 2	Commission 2-12-ELEC/GAS	7/10/2012	7/19/2012	Maureen P. Heaphy		
Commission Set 2	Commission 2-13-ELEC/GAS	7/10/2012	7/20/2012	Maureen P. Heaphy		
Commission Set 2	Commission 2-14-ELEC/GAS	7/10/2012	7/24/2012	Michael D. Laflamme		
Commission Set 2	Commission 2-15-ELEC/GAS	7/10/2012	7/31/2012	Maureen P. Heaphy		

**The Narragansett Electric Company  
d/b/a National Grid  
R.I.P.U.C. Docket No. 4323  
Discovery Log**

<b>DATA SET</b>	<b>DATA REQUEST</b>	<b>DATE ISSUED</b>	<b>DATE FILED</b>	<b>WITNESS</b>	<b>ATTACHMENT</b>	<b>CONFIDENTIAL ATTACHMENT</b>
Commission Set 2	Commission 2-16-ELEC/GAS	7/10/2012	<b>7/30/2012</b>	Timothy D. Horan	Att. COMM 2-16-1-ELEC/GAS Att. COMM 2-16-2-ELEC/GAS	
Commission Set 2	Commission 2-17-ELEC/GAS	7/10/2012	<b>7/18/2012</b>	Robert B. Hevert		
Commission Set 2	Commission 2-18-ELEC/GAS	7/10/2012	<b>7/18/2012</b>	Michael D. Laflamme		
Commission Set 2	Commission 2-19-ELEC	7/10/2012	<b>7/16/2012</b>	Michael D. Laflamme		
Commission Set 2	Commission 2-20-GAS	7/10/2012	<b>7/19/2012</b>	Michael D. Laflamme		
Commission Set 2	Commission 2-21-ELEC/GAS	7/10/2012	<b>7/16/2012</b>	Michael D. Laflamme		
Commission Set 2	Commission 2-22-ELEC/GAS	7/10/2012	<b>7/26/2012</b>	Stephen F. Doucette		
Commission Set 2	Commission 2-23-ELEC/GAS	7/10/2012	<b>8/1/2012</b>	Michael D. Laflamme		
Commission Set 2	Commission 2-24-GAS	7/10/2012	<b>7/23/2012</b>	Ann E. Leary		
Commission Set 2	Commission 2-25-ELEC/GAS	7/10/2012	<b>7/23/2012</b>	Evelyn M. Kaye	Att. COMM 2-25-1-ELEC/GAS Att. COMM 2-25-2-ELEC/GAS	
Commission Set 2	Commission 2-26-ELEC/GAS	7/10/2012	<b>7/23/2012</b>	Evelyn M. Kaye		
Commission Set 2	Commission 2-27-GAS	7/10/2012	<b>7/16/2012</b>	Evelyn M. Kaye		
Commission Set 2	Commission 2-28-ELEC/GAS	7/10/2012	<b>7/16/2012</b>	Evelyn M. Kaye		
Commission Set 2	Commission 2-29-ELEC/GAS	7/10/2012	<b>7/16/2012</b>	Evelyn M. Kaye		
Commission Set 2	Commission 2-30-ELEC/GAS	7/10/2012	<b>7/16/2012</b>	Evelyn M. Kaye		
Commission Set 2	Commission 2-31-ELEC	7/10/2012	<b>7/24/2012</b>	Evelyn M. Kaye	Att. COMM 2-31-ELEC/GAS	
Commission Set 2	Commission 2-32-GAS	7/10/2012	<b>7/23/2012</b>	Evelyn M. Kaye		
Commission Set 2	Commission 2-33-ELEC	7/10/2012	<b>7/20/2012</b>	Michael R. Hrycin		
Commission Set 2	Commission 2-34-ELEC	7/10/2012	<b>7/20/2012</b>	Michael R. Hrycin		
Commission Set 2	Commission 2-35-ELEC	7/10/2012	<b>7/27/2012</b>	Michael R. Hrycin	Att. COMM 2-35-1-ELEC Att. COMM 2-35-2-ELEC	
Commission Set 2	Commission 2-36-GAS	7/10/2012	<b>7/24/2012</b>	Jeffrey P. Martin		
Commission Set 2	Commission 2-37-ELEC/GAS	7/10/2012	<b>7/19/2012</b>	Jeffrey P. Martin		
Commission Set 2	Commission 2-38-ELEC	7/10/2012	<b>7/16/2012</b>	Michael D. Laflamme		
Commission Set 2	Commission 2-39-GAS	7/10/2012	<b>7/16/2012</b>	A. Leo Silvestrini		
Commission Set 2	Commission 2-40-ELEC/GAS	7/10/2012	<b>7/17/2012</b>	Michael D. Laflamme		
Commission Set 2	Commission 2-41-ELEC	7/10/2012	<b>7/17/2012</b>	Michael D. Laflamme		
Commission Set 2	Commission 2-42-ELEC/GAS	7/10/2012	<b>7/16/2012</b>	Michael D. Laflamme		
Commission Set 2	Commission 2-43-ELEC/GAS	7/10/2012	<b>7/24/2012</b>	Maureen P. Heaphy & Michael D. Laflamme	Att. COMM 2-43-ELEC/GAS	
Commission Set 2	Commission 2-44-ELEC/GAS	7/10/2012	<b>7/16/2012</b>	Michael D. Laflamme		
Commission Set 2	Commission 2-45-ELEC	7/10/2012	<b>7/20/2012</b>	Michael D. Laflamme	Att. COMM 2-45-ELEC	
Commission Set 2	Commission 2-46-ELEC	7/10/2012	<b>7/16/2012</b>	Michael D. Laflamme		

The Narragansett Electric Company  
d/b/a National Grid  
R.I.P.U.C. Docket No. 4323  
Discovery Log

DATA SET	DATA REQUEST	DATE ISSUED	DATE FILED	WITNESS	ATTACHMENT	CONFIDENTIAL ATTACHMENT
Commission Set 2	Commission 2-47-ELEC	7/10/2012	7/20/2012	Michael D. Laflamme		
Commission Set 2	Commission 2-48-ELEC	7/10/2012	7/30/2012	Michael D. Laflamme		
Commission Set 2	Commission 2-49-ELEC/GAS	7/10/2012	7/18/2012	Michael D. Laflamme	Att. DIV 2-49-ELEC/GAS	
<b>COMMISSION SET 3</b>						
Commission Set 3	Commission 3-1-ELEC	8/7/2012	8/15/2012	Michael D. Laflamme	Att. COMM 3-1-ELEC	
Commission Set 3	Commission 3-2-ELEC/GAS	8/7/2012	8/10/2012	Michael D. Laflamme	Att. COMM 3-2-ELEC/GAS	
Commission Set 3	Commission 3-3-ELEC/GAS	8/7/2012	8/10/2012	Michael D. Laflamme		
Commission Set 3	Commission 3-4-ELEC/GAS	8/7/2012	8/10/2012	Michael D. Laflamme		
Commission Set 3	Commission 3-5-ELEC/GAS	8/7/2012	8/10/2012	Michael D. Laflamme	Att. COMM 3-5-ELEC/GAS	
Commission Set 3	Commission 3-6-ELEC/GAS	8/7/2012	8/10/2012	Michael D. Laflamme		
Commission Set 3	Commission 3-7-GAS	8/7/2012	8/10/2012	Michael D. Laflamme & Susan L. Fleck		
Commission Set 3	Commission 3-8-GAS	8/7/2012	8/10/2012	Michael D. Laflamme		
Commission Set 3	Commission 3-9-GAS	8/7/2012	8/16/2012	Michael D. Laflamme	Att. COMM 3-9-GAS	
Commission Set 3	Commission 3-10-GAS	8/7/2012	8/8/2012	Michael D. Laflamme		
Commission Set 3	Commission 3-11-GAS	8/7/2012	8/10/2012	Ann E. Leary & A. Leo Silvestrini		
Commission Set 3	Commission 3-12-ELEC	8/7/2012	8/15/2012	Jeanne A. Lloyd		
Commission Set 3	Commission 3-13-GAS	8/7/2012	8/10/2012	Paul M. Normand		
Commission Set 3	Commission 3-14-GAS	8/7/2012	8/9/2012	Paul M. Normand		
Commission Set 3	Commission 3-15-GAS	8/7/2012	8/10/2012	Paul M. Normand	Att. COMM 3-15-GAS	
Commission Set 3	Commission 3-16-GAS	8/7/2012	8/10/2012	Paul M. Normand		
Commission Set 3	Commission 3-17-ELEC	8/7/2012	8/16/2012	Evelyn M. Kaye		
Commission Set 3	Commission 3-18-ELEC/GAS	8/7/2012	8/8/2012	Michael D. Laflamme		
Commission Set 3	Commission 3-19-ELEC/GAS	8/7/2012	8/8/2012	Timothy F. Horan		
Commission Set 3	Commission 3-20-ELEC/GAS	8/7/2012	8/24/2012	Timothy F. Horan	Att. COMM 3-20-1-ELEC/GAS Att. COMM 3-20-2-ELEC/GAS	
Commission Set 3	Commission 3-21-ELEC/GAS	8/7/2012	8/15/2012	Timothy F. Horan		
Commission Set 3	Commission 3-22-ELEC/GAS	8/7/2012	8/24/2012	Maureen P. Heaphy		
Commission Set 3	Commission 3-23-ELEC/GAS	8/7/2012	8/10/2012	Evelyn M. Kaye		
Commission Set 3	Commission 3-24-ELEC/GAS	8/7/2012	8/15/2012	Evelyn M. Kaye		
Commission Set 3	Commission 3-25-ELEC/GAS	8/7/2012	8/9/2012	Evelyn M. Kaye		
Commission Set 3	Commission 3-26-GAS	8/7/2012	8/10/2012	Evelyn M. Kaye		
Commission Set 3	Commission 3-27-GAS	8/7/2012	8/15/2012	Evelyn M. Kaye		
Commission Set 3	Commission 3-28-ELEC/GAS	8/7/2012	8/20/2012	Robert B. Hevert		

The Narragansett Electric Company  
d/b/a National Grid  
R.I.P.U.C. Docket No. 4323  
Discovery Log

DATA SET	DATA REQUEST	DATE ISSUED	DATE FILED	WITNESS	ATTACHMENT	CONFIDENTIAL ATTACHMENT
Commission Set 3	Commission 3-29-ELEC/GAS	8/7/2012	8/20/2012	Robert B. Hevert		
Commission Set 3	Commission 3-30-ELEC/GAS	8/7/2012	8/21/2012	Robert B. Hevert		
Commission Set 3	Commission 3-31-ELEC/GAS	8/7/2012	8/20/2012	Robert B. Hevert		
Commission Set 3	Commission 3-32-ELEC/GAS	8/7/2012	8/20/2012	Robert B. Hevert		
Commission Set 3	Commission 3-33-ELEC/GAS	8/7/2012	8/20/2012	Robert B. Hevert		
Commission Set 3	Commission 3-34-ELEC (Redacted)	8/7/2012	8/20/2012	Evelyn M. Kaye		
Commission Set 3	Commission 3-34-ELEC (Confidential)	8/7/2012	8/20/2012	Evelyn M. Kaye		
Commission Set 3	Commission 3-35-ELEC	8/7/2012	8/16/2012	Evelyn M. Kaye		
<b>COMMISSION SET 4</b>						
Commission Set 4	Commission 4-1-ELEC/GAS	8/10/2012	8/20/2012	Robert B. Hevert		
Commission Set 4	Commission 4-2-ELEC/GAS	8/10/2012	8/20/2012	Robert B. Hevert		
Commission Set 4	Commission 4-3-ELEC/GAS	8/10/2012	8/20/2012	Robert B. Hevert		
Commission Set 4	Commission 4-4-ELEC/GAS	8/10/2012	8/20/2012	Robert B. Hevert		
Commission Set 4	Commission 4-5-ELEC/GAS	8/10/2012	8/20/2012	Robert B. Hevert		
Commission Set 4	Commission 4-6-ELEC/GAS	8/10/2012	8/20/2012	Robert B. Hevert		
Commission Set 4	Commission 4-7-ELEC/GAS	8/10/2012	8/20/2012	Robert B. Hevert		
Commission Set 4	Commission 4-8-ELEC/GAS	8/10/2012	8/20/2012	Robert B. Hevert		
Commission Set 4	Commission 4-9-ELEC/GAS	8/10/2012	8/20/2012	Robert B. Hevert		
Commission Set 4	Commission 4-10-ELEC/GAS	8/10/2012	8/20/2012	Robert B. Hevert		
Commission Set 4	Commission 4-11-ELEC/GAS	8/10/2012	8/20/2012	Robert B. Hevert		



DATA SET	DATA REQUEST	DATE ISSUED	DATE FILED	WITNESS	ATTACHMENT	CONFIDENTIAL ATTACHMENT
Commission Set 4	Commission 4-10-ELEC/GAS	8/10/2012	<b>8/20/2012</b>	Robert B. Hevert		
Commission Set 4	Commission 4-11-ELEC/GAS	8/10/2012	<b>8/20/2012</b>	Robert B. Hevert		

DATA SET	DATA REQUEST	DATE ISSUED	DATE FILED	WITNESS	ATTACHMENT	CONFIDENTIAL ATTACHMENT
<b>NAVY SET 1</b>						
Navy Set 1	Navy 1-1-ELEC	7/27/2012	<b>8/14/2012</b>	Legal Department	See Attached Page	
Navy Set 1	Navy 1-2-ELEC	7/27/2012	<b>8/14/2012</b>	Legal Department	See Attached Page	
Navy Set 1	Navy 1-3-ELEC	7/27/2012	<b>8/13/2012</b>	Legal Department	Att. Navy 1-3-ELEC	
Navy Set 1	Navy 1-4-ELEC	7/27/2012	<b>8/14/2012</b>	Legal Department	Att. Navy 1-4-ELEC	
Navy Set 1	Navy 1-5-ELEC	7/27/2012	<b>8/8/2012</b>	Jeanne A. Lloyd	Att. Navy 1-5-1-ELEC Att. Navy 1-5-2-ELEC	
Navy Set 1	Navy 1-6-ELEC	7/27/2012	<b>8/8/2012</b>	Jeanne A. Lloyd & Michael D. Laflamme		
Navy Set 1	Navy 1-7-ELEC	7/27/2012	<b>8/13/2012</b>	Michael D. Laflamme		
Navy Set 1	Navy 1-8-ELEC	7/27/2012	<b>8/7/2012</b>	Jeanne A. Lloyd	Att. Navy 1-8-1-ELEC Att. Navy 1-8-2-ELEC Att. Navy 1-8-3-ELEC	
Navy Set 1	Navy 1-9-ELEC	7/27/2012	<b>8/7/2012</b>	Jeanne A. Lloyd		
Navy Set 1	Navy 1-10-ELEC	7/27/2012	<b>8/7/2012</b>	Howard S. Gorman		
Navy Set 1	Navy 1-11-ELEC	7/27/2012	<b>8/2/2012</b>	Howard S. Gorman		
Navy Set 1	Navy 1-12-ELEC	7/27/2012	<b>8/2/2012</b>	Howard S. Gorman		
Navy Set 1	Navy 1-13-ELEC	7/27/2012	<b>8/2/2012</b>	Howard S. Gorman		
Navy Set 1	Navy 1-14-ELEC	7/27/2012	<b>8/13/2012</b>	Michael D. Laflamme		

## Navy Set 1

### Navy 1-1-ELEC

#### Attachments

Schedule MDL-2	Reallocation of Test Year Service Company Costs
Schedule MDL-3-ELEC	Narragansett Electric Cost of Service
Schedule MDL-4-ELEC	Narragansett Electric Cash Working Capital Study
Schedule MDL-5	Illustrative Pension/OPEB Tracker
Schedule MDL-6	Illustrative Property Tax Tracker
Schedule EMK-1	Charge Off Data
Schedule EMK-3	Residential Standard Offer Service Rates v. Rolling 12 Month
Schedule EMK-4	Unemployment Data

### Navy 1-2-ELEC

#### Attachments

Workpaper MDL-1	Integrated Facilities Agreement (IFA)
Workpaper MDL-3	Salary and Wages
Workpaper MDL-4-ELEC	Average New Hires by Company - Electric
Workpaper MDL-5	Healthcare
Workpaper MDL-6	Donations
Workpaper MDL-7	Computer Software - Service company Rent Expense
Workpaper MDL-8-ELEC	Regulatory Assessments - Electric
Workpaper MDL-9	Facilities
Workpaper MDL-10	Facilities Consolidation Savings
Workpaper MDL-11	Postage
Workpaper MDL-12	OPEX Associated with CAPEX Three Year Historical Percentages
Workpaper MDL-13-ELEC	Advertising - Electric
Workpaper MDL-14	Average Salaries - Consumer Advocates & Additional US Foundations Program Staff
Workpaper MDL-15	Productivity and Efficiency Savings
Workpaper MDL-16	Paperless Billing Adjustment
Workpaper MDL-18	Investment Tax Credit
Workpaper MDL-19-ELEC	Depreciation Expense - Electric
Workpaper MDL-20	Amortization of Loss on Reacquired Debt
Workpaper MDL-21-ELEC	Other Rate Base Items - Electric
Workpaper MDL-22-ELEC	Accumulated Deferred Income Tax - Electric
Workpaper MDL-23	Storm Fund Deficiency Recovery
Workpaper MDL-24	Property Tax
Workpaper MDL-26	Pension and OPEB Workpapers (located in Book 6 of 11)

Commission 3-20-ELEC/GAS

Request:

Referring to the organizational chart produced in the Company's Response to COMM 2-16-ELEC/GAS, please reproduce the chart showing only those employees having responsibilities related to Rhode Island. For each such employee, please designate the percent of responsibilities that relate to Rhode Island.

Response:

The Company operates within a matrixed organizational structure as shown in Attachment COMM 3-20-1-ELEC/GAS. As this attachment illustrates, the jurisdictional model is overlapped with the service company services. Under this structure, significant levels of services are provided to the Company through the National Grid service company structure. The service company structure is not easily reflected on the organizational chart and can change from year to year because of personnel changes and other organizational changes. Attachment COMM 3-20-2-ELEC/GAS identifies those employees with substantial participation in the Rhode Island jurisdictional model for Rhode Island operations, with the following exceptions:

- Page 3 of 18 – Only George Maerkle, Supervisor, Lab Testing Gas, NE/NY, RI, has Rhode Island responsibilities. Ragnvald Johnson, Manager Lab & Testing Gas, NE/NY has shared responsibilities for overseeing Rhode Island work.
- Page 5 of 18 – Only John Carey, Lead Engineer Supervisor, Electric Distribution Design, RI and Joao Castro, Supervising Lead Engineer, Electric Distribution Design, RI Providence have Rhode Island responsibilities. Robert Brawley, Director Electric Distribution Design, has shared responsibilities for overseeing Rhode Island work.
- Page 6 of 18 – Only Deborah Byron, Lead Program Manager, Operations Regulatory Compliance, Rhode Island, has Rhode Island responsibilities. Robert Wilson, Director, Operations, Codes & Policies, has shared responsibilities for overseeing Rhode Island work.
- Page 8 of 18 – Michael Mahoney, Senior Supervisor, Overhead Lines, Somerset, works 100 percent in Massachusetts. Also, the vacant position, Supervisor, I&M Compliance, Providence has been filled and now includes responsibilities for Rhode Island and western Massachusetts. This individual's Massachusetts responsibilities account for an estimated 30 percent of his time. Mike Hrycin, Director, Overhead Lines, RI spends an estimated 10 percent of his time overseeing the Massachusetts responsibilities of his staff and 90 percent on Rhode Island responsibilities.

Commission 3-20-ELEC/GAS, page 2

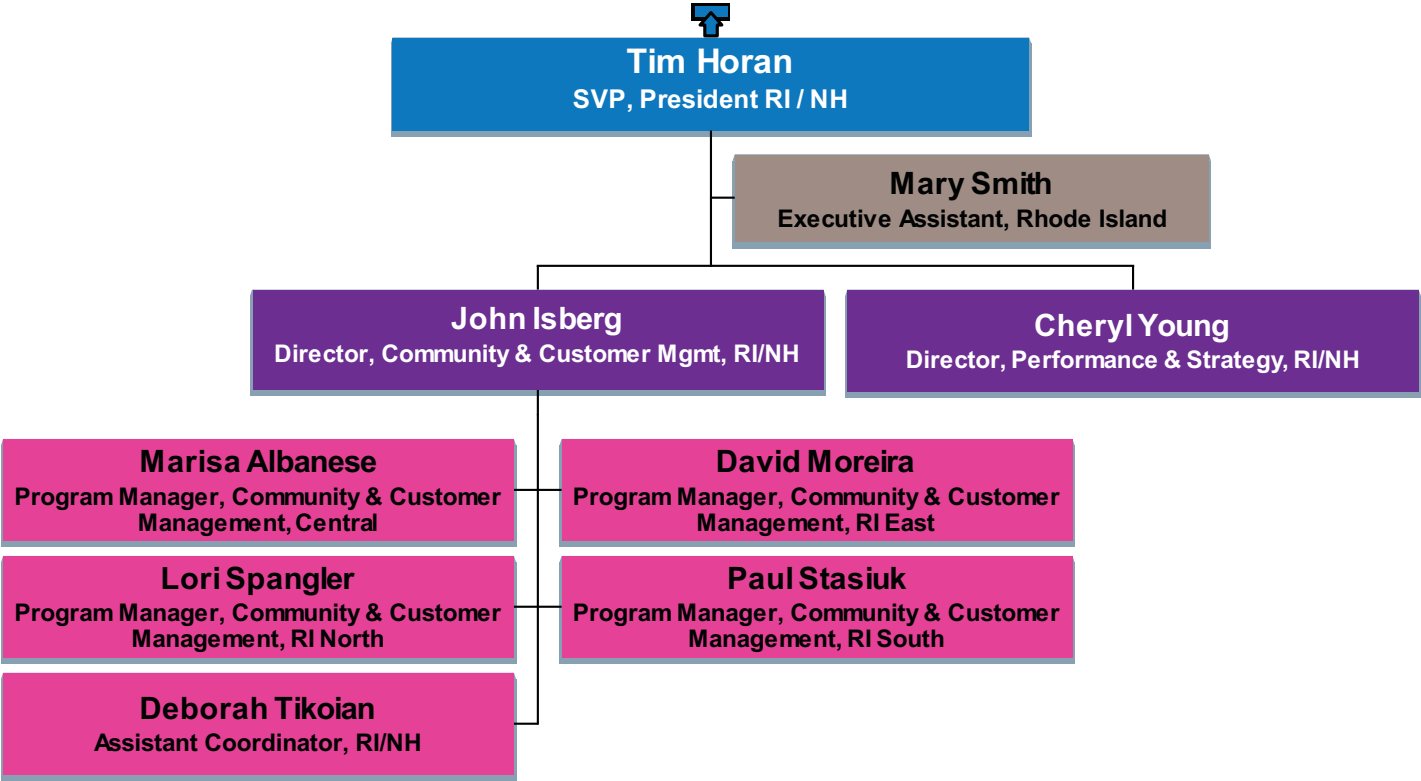
- Page 12 of 18 – Only Mark Kaye, Senior Supervisor, Telecom, Providence, has Rhode Island responsibilities. Kevin Malloy, Manager, Telecommunications NE, has shared responsibilities for overseeing Rhode Island work.
- Page 13 of 18 – Only Jennifer Hutchinson, Senior Counsel I, RI/NH Regulatory and Thomas Teehan, Senior Counsel II, RI/NH Regulatory have Rhode Island responsibilities. Celia O'Brien, Assistant General Counsel & Director, RI/NH Regulatory & US Regulatory Compliance, has shared responsibilities for overseeing Rhode Island work. The three Regulatory Compliance positions pertain to all National Grid jurisdictions and include Rhode Island responsibilities.
- Page 14 of 18 – Only Qiang Tong, Lead Analyst, Revenue Analysis, RI, has Rhode Island responsibilities. Her responsibilities are estimated to be 60 percent Rhode Island. Andrew Forth, Director, Revenue Analysis & Budget Advocacy NE/FERC, has shared responsibilities for overseeing Rhode Island work.
- Page 18 of 18 – Only Mike Ryan, Director, Government Relations - RI, has Rhode Island responsibilities. George Mayhew, Corporate Affairs Director, has shared responsibilities for overseeing Rhode Island work.

The percentage of time allocated to the Company by service company employees constantly changes depending on workload, organizational design, etc. Therefore, this would be very difficult information to extract and would not be helpful because it is continually changing.

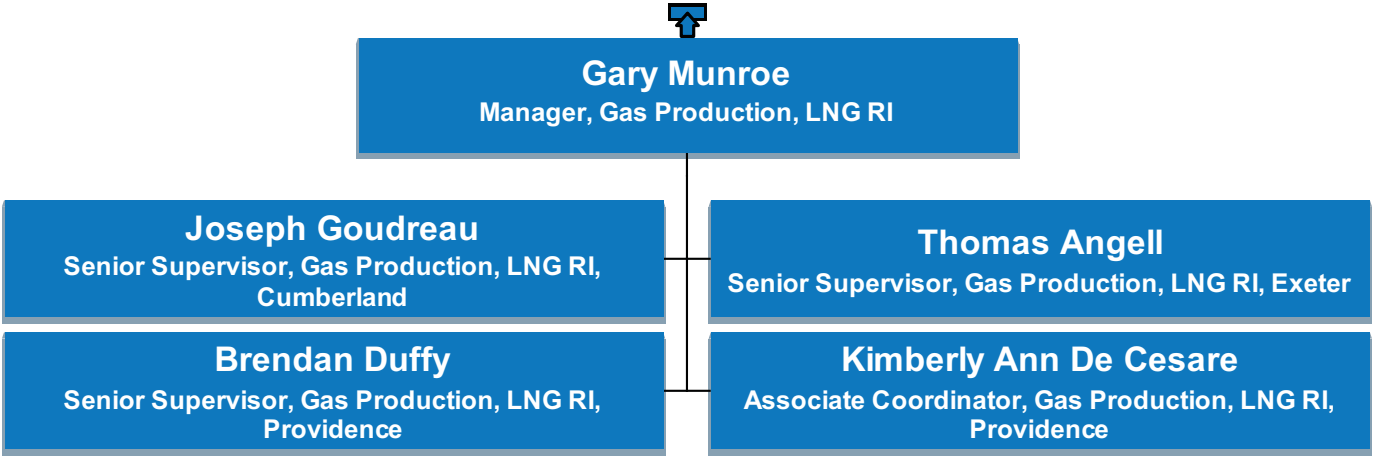
### New US Operating Model



# US Jurisdictions - RI / NH

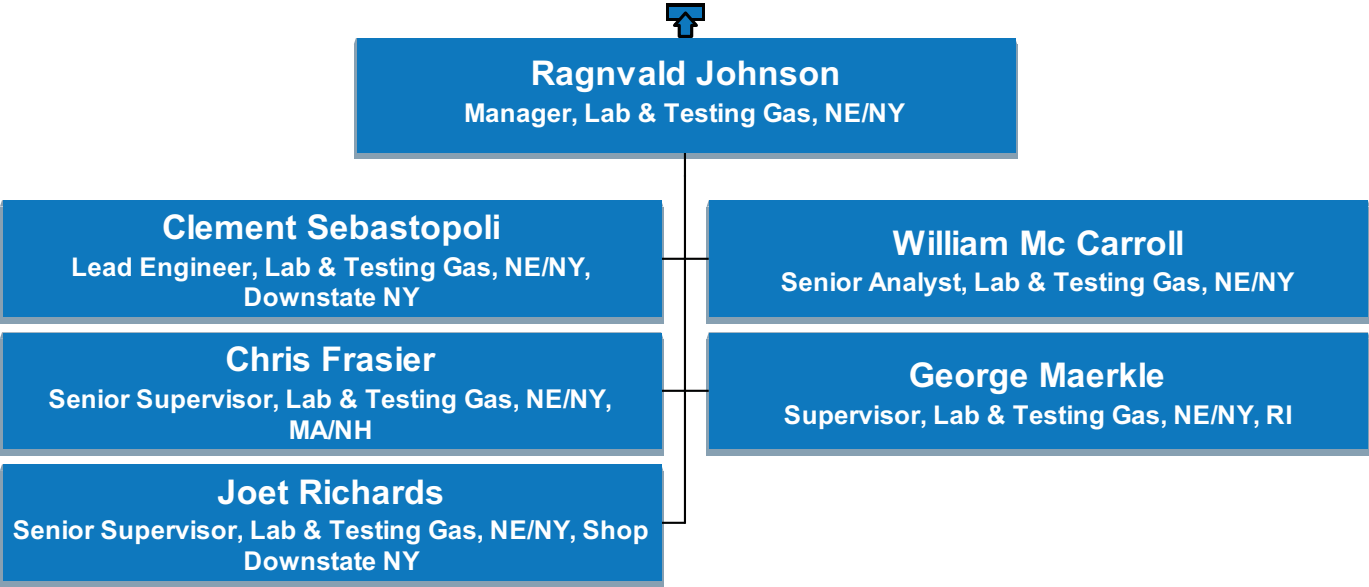


# US Operations

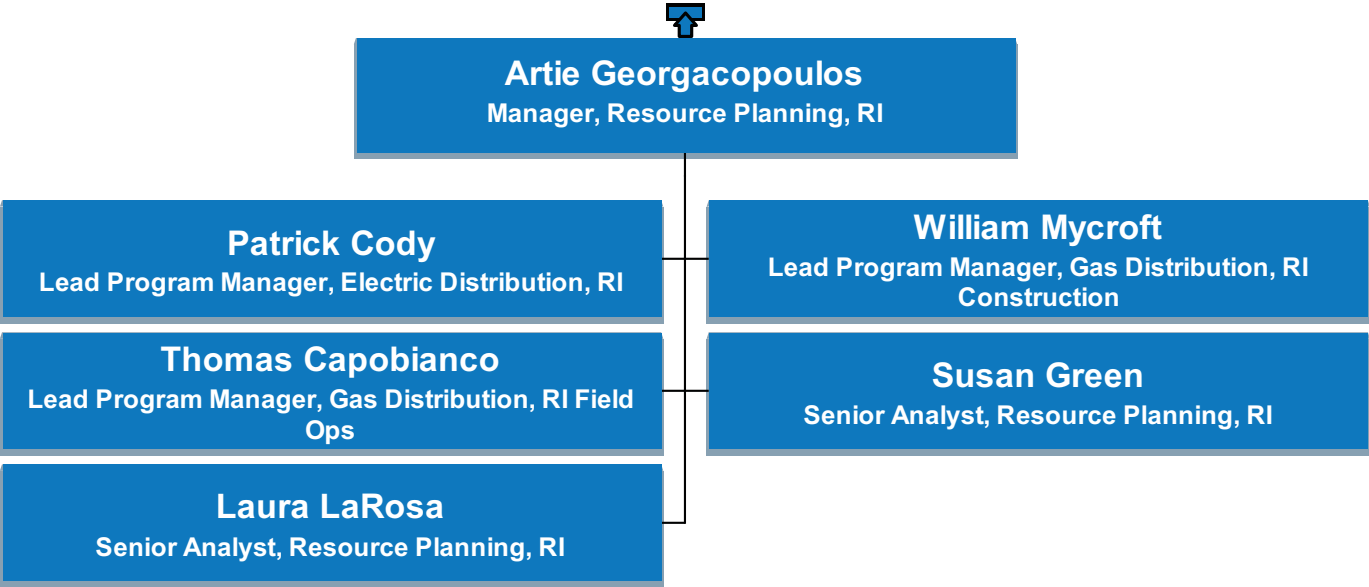




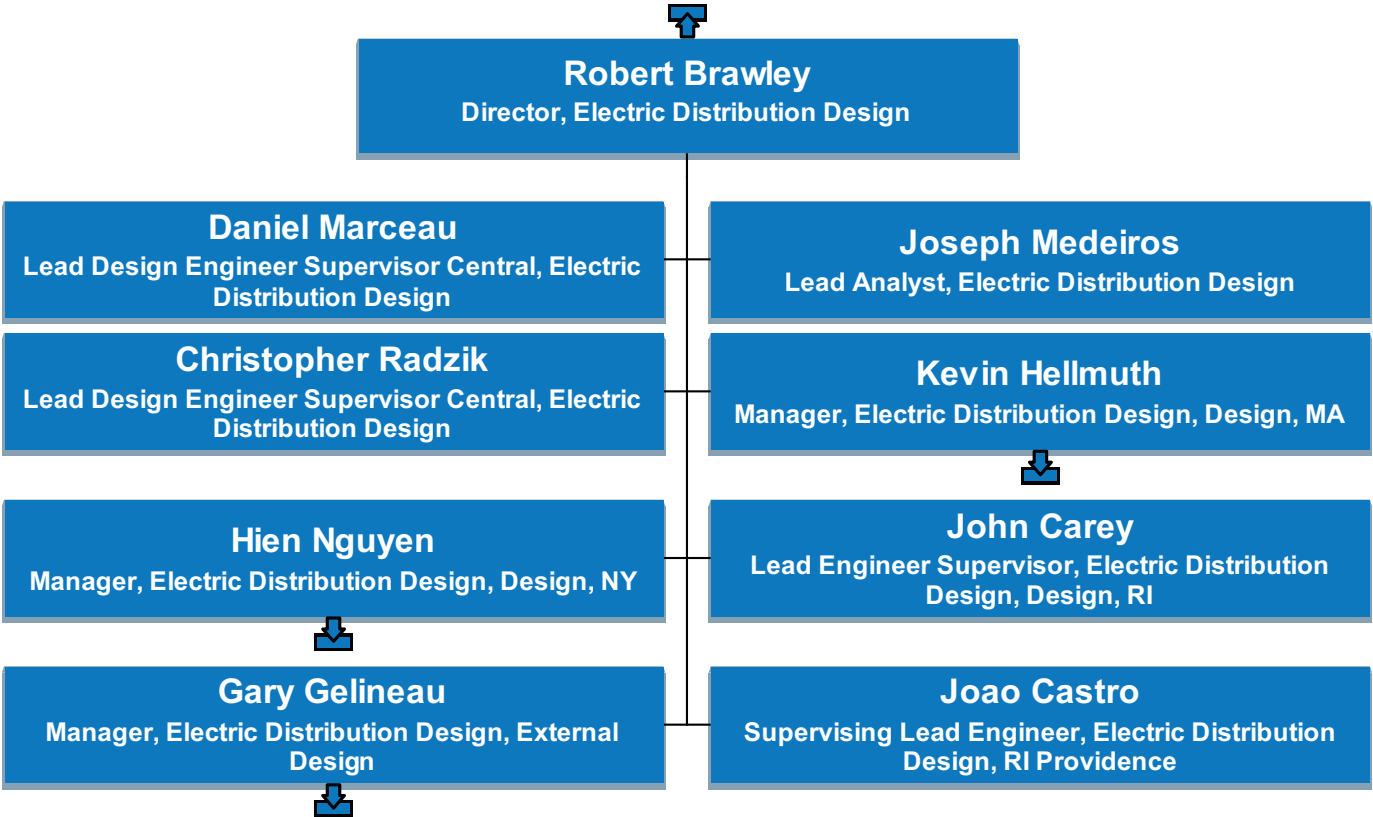
# US Operations



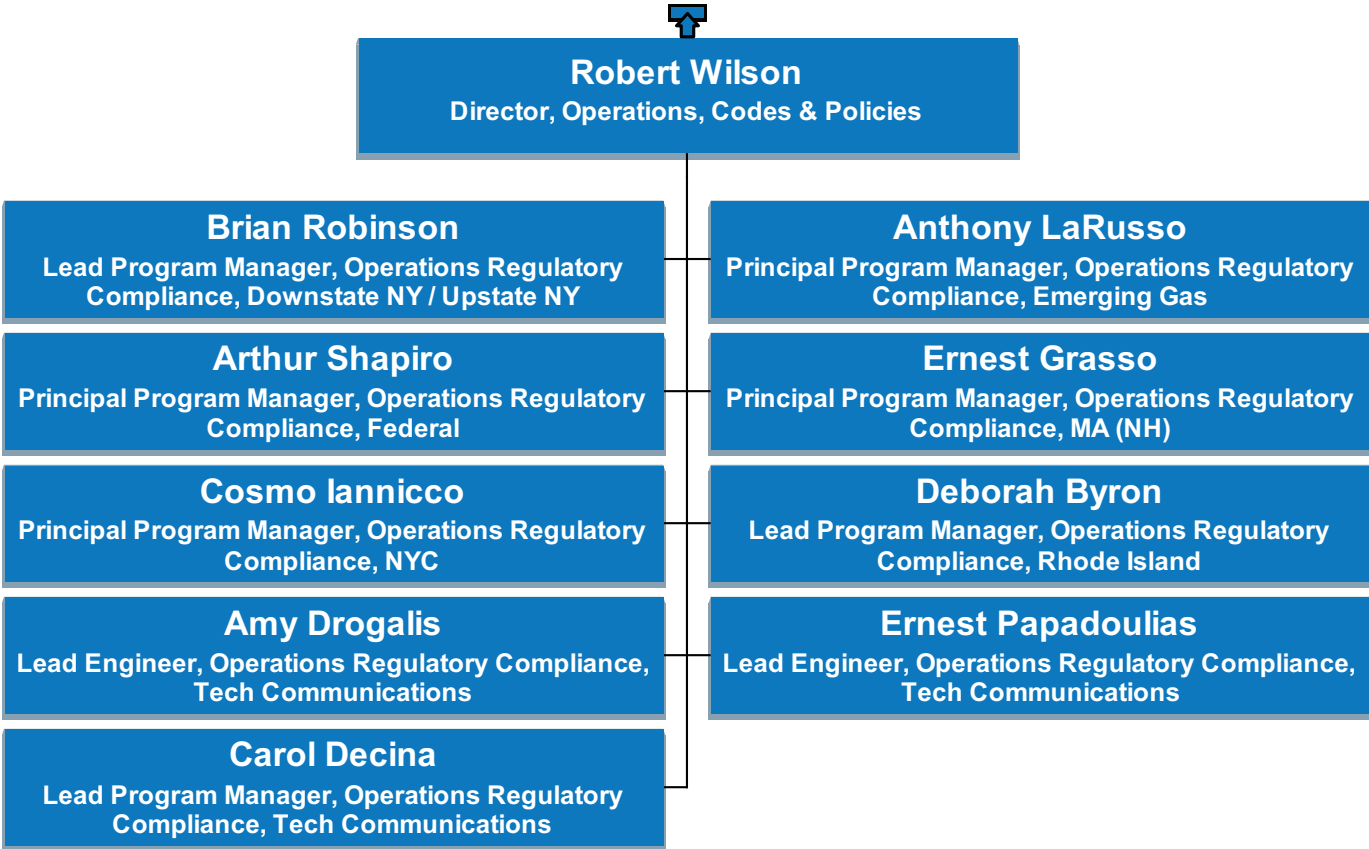
# US Operations



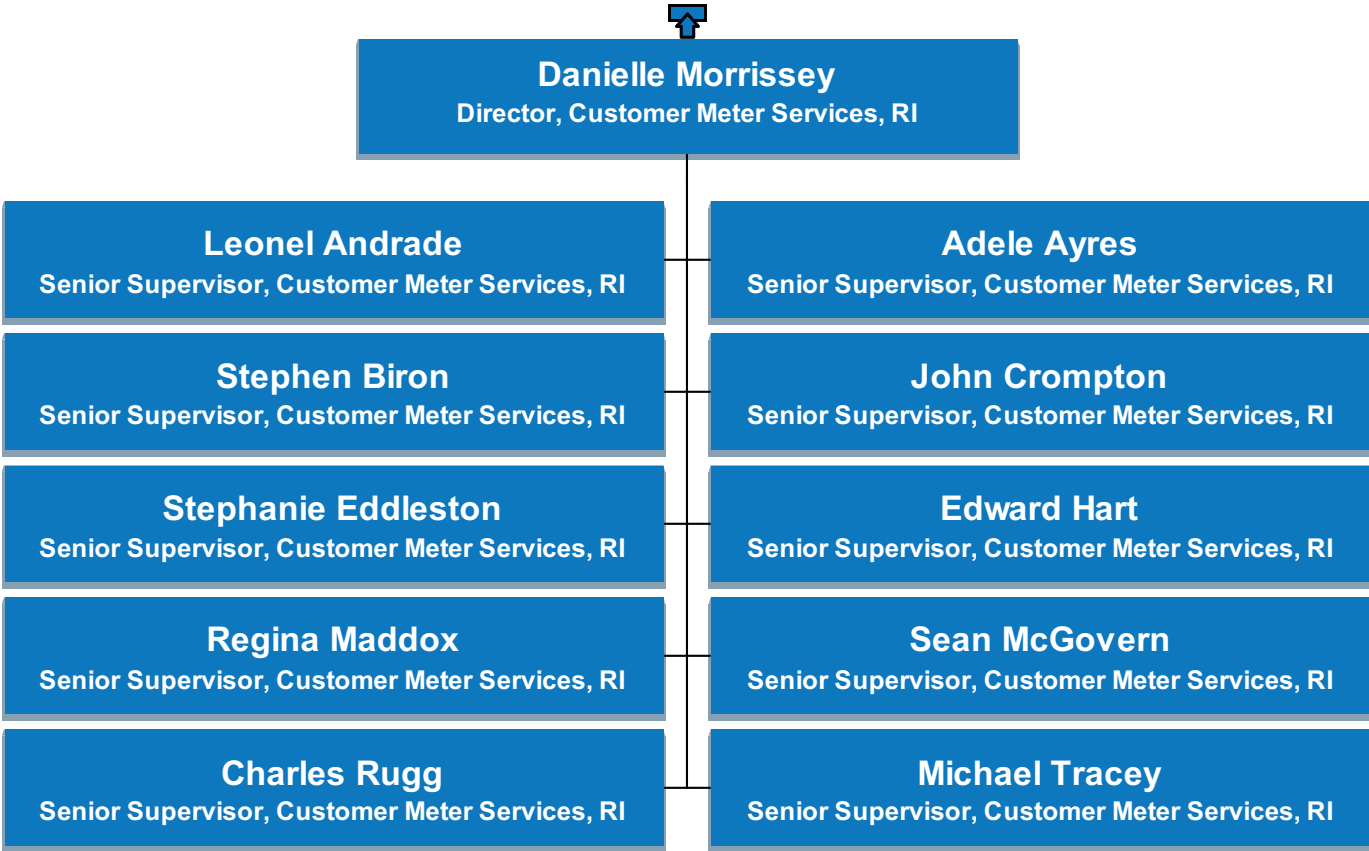
# US Network Strategy



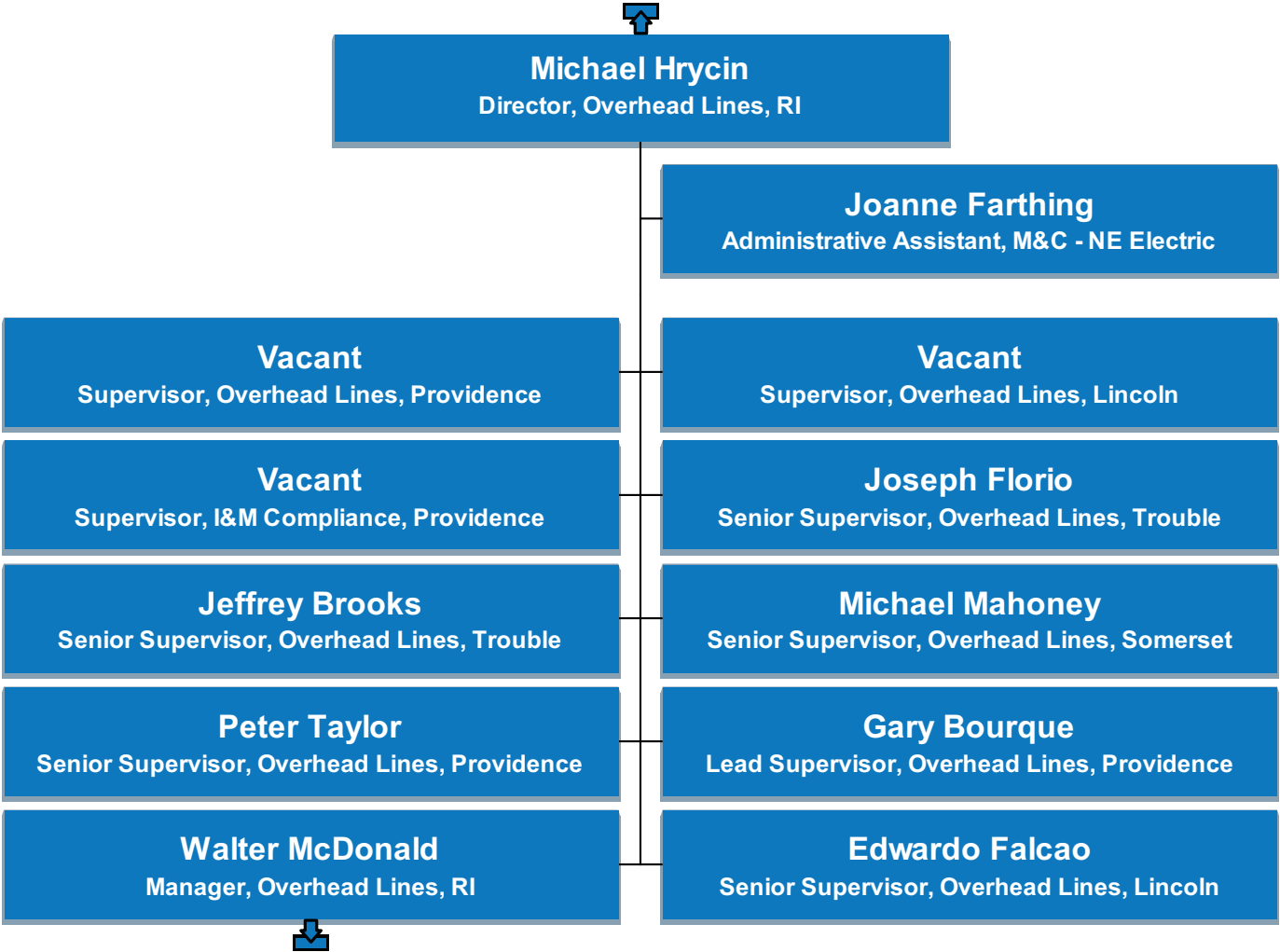
# US Network Strategy



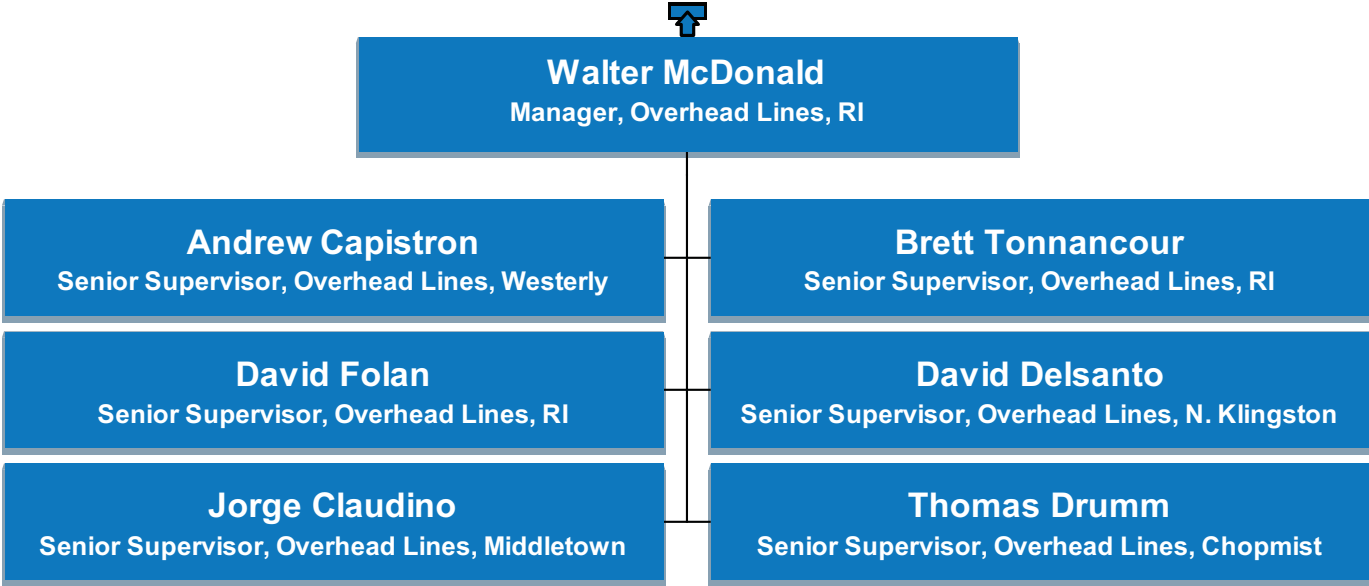
# US Maintenance & Construction



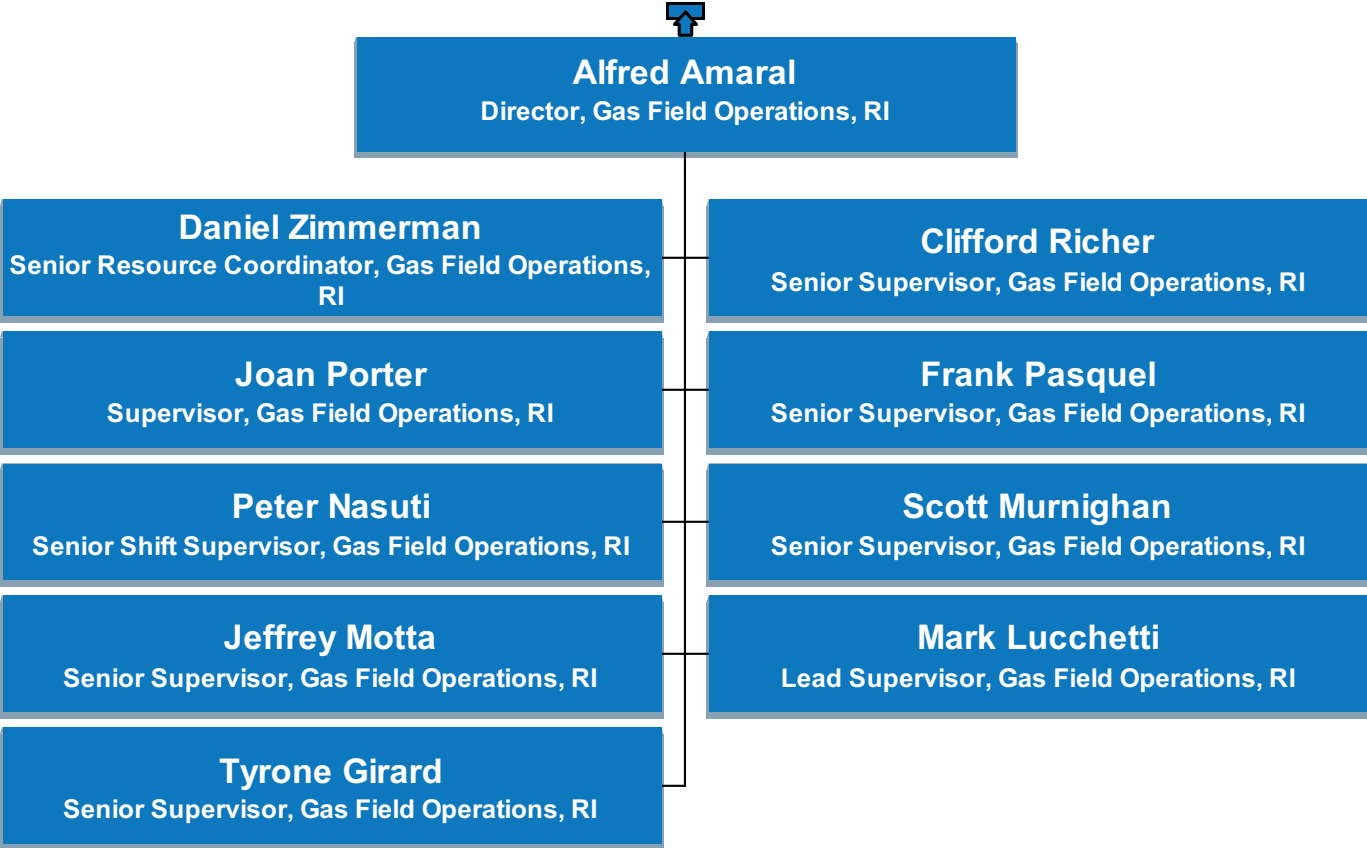
# US Maintenance & Construction



# US Maintenance & Construction

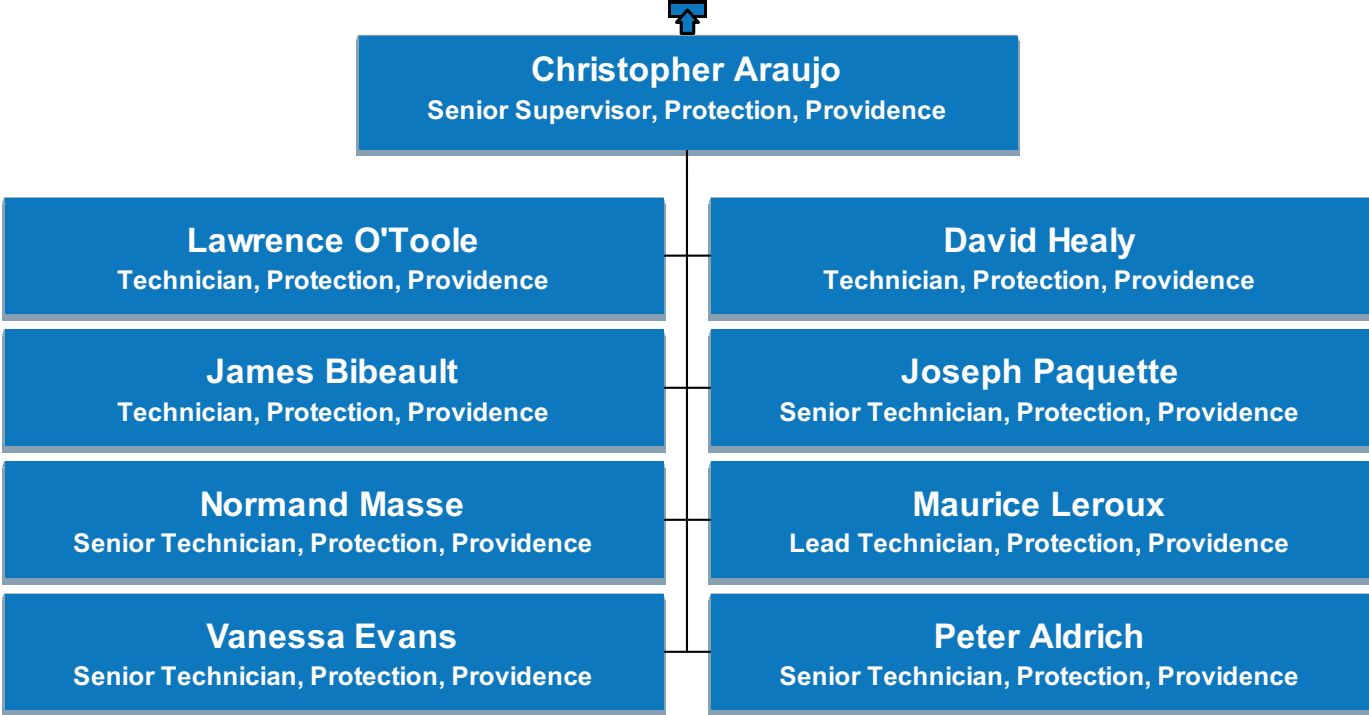


# US Maintenance & Construction

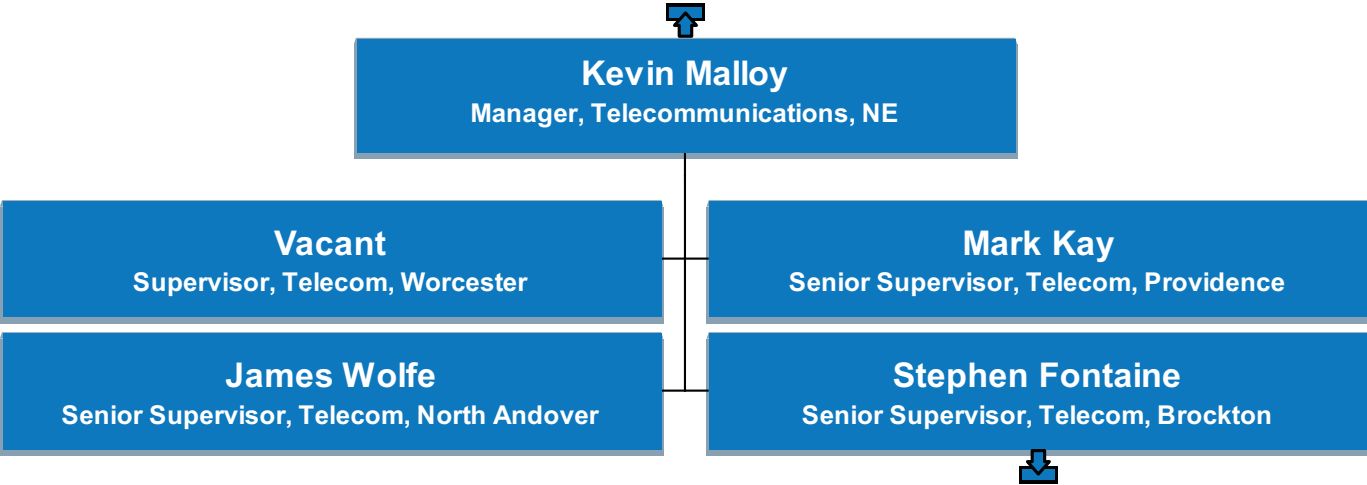




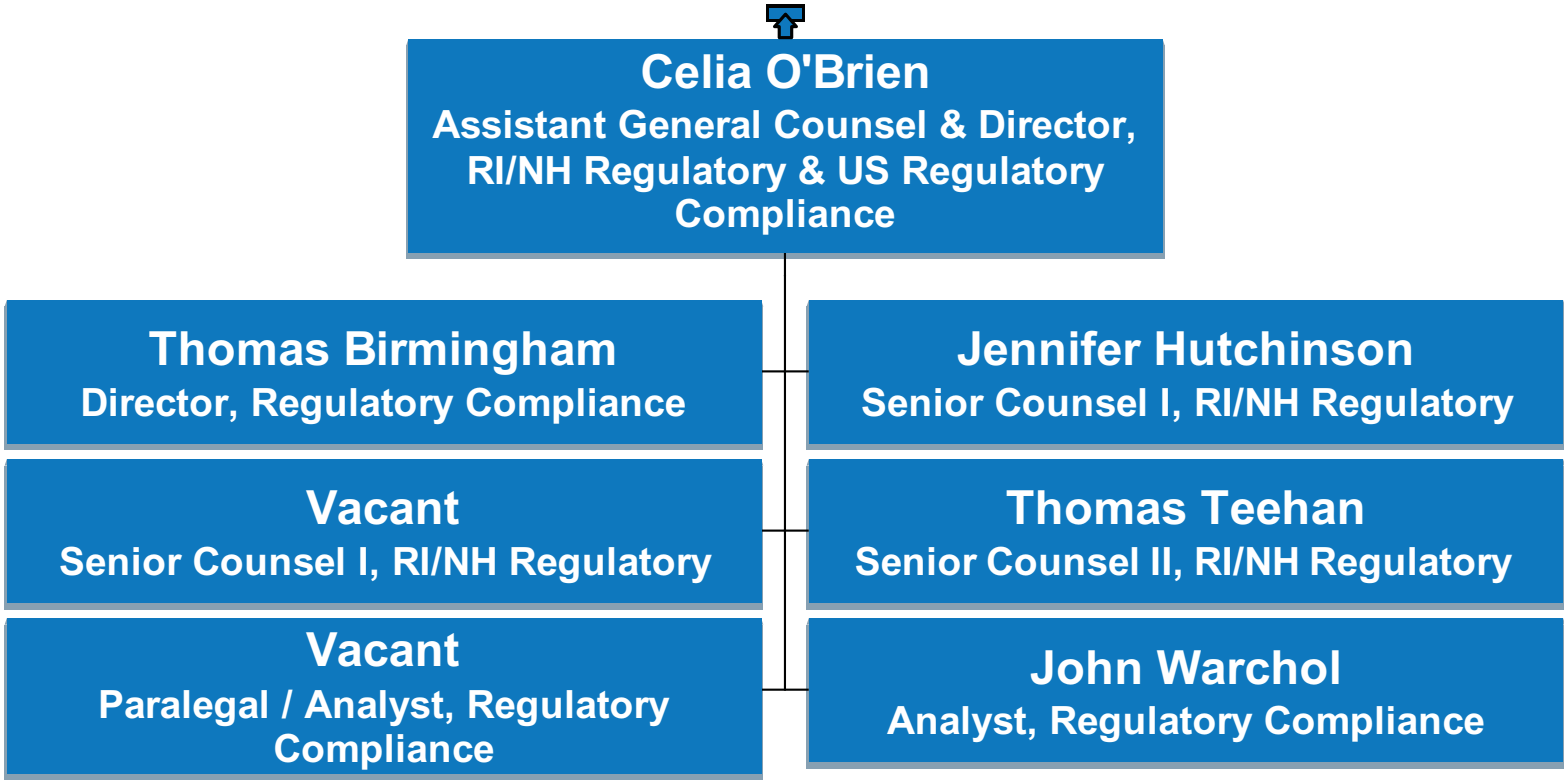
# US Maintenance & Construction



# US Maintenance & Construction



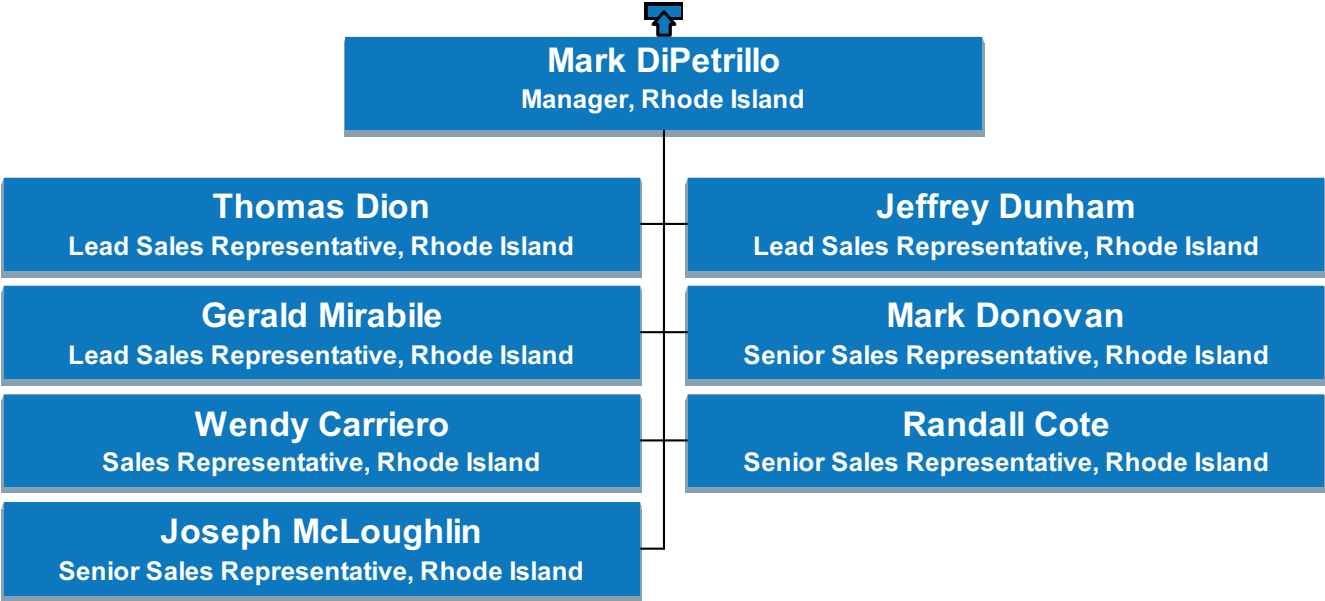
# US Legal



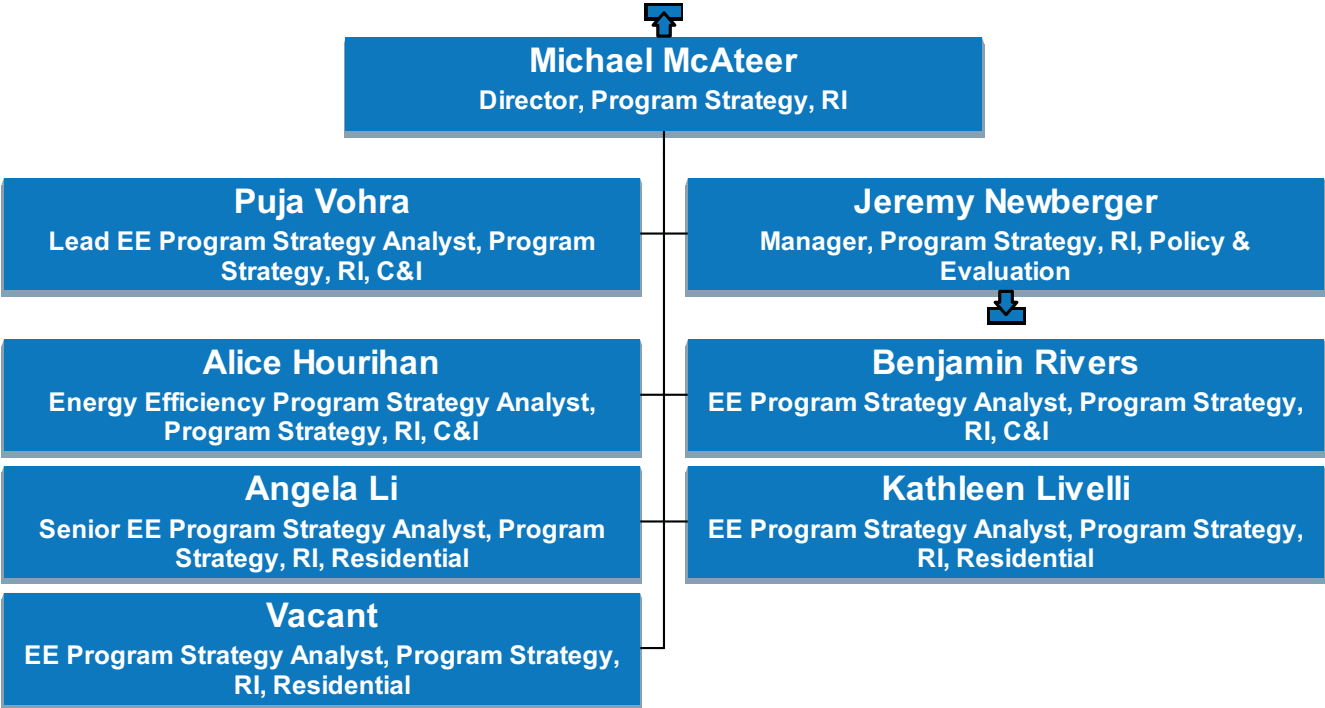
# US Finance



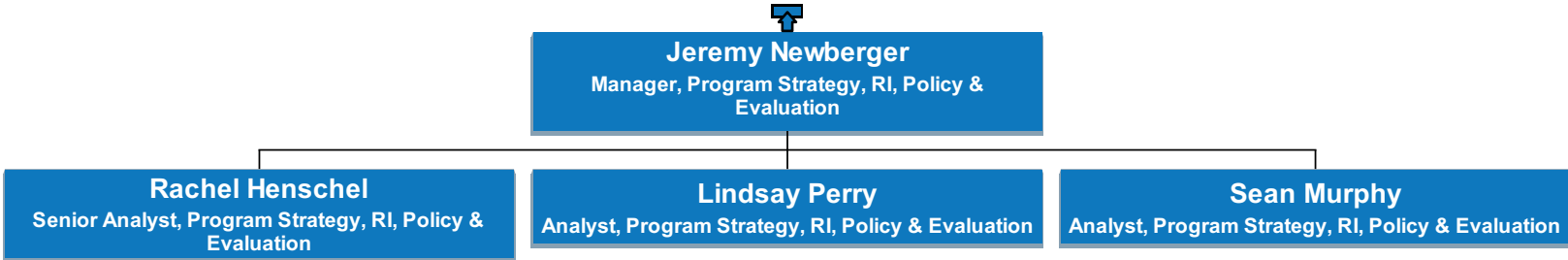
# US Customer



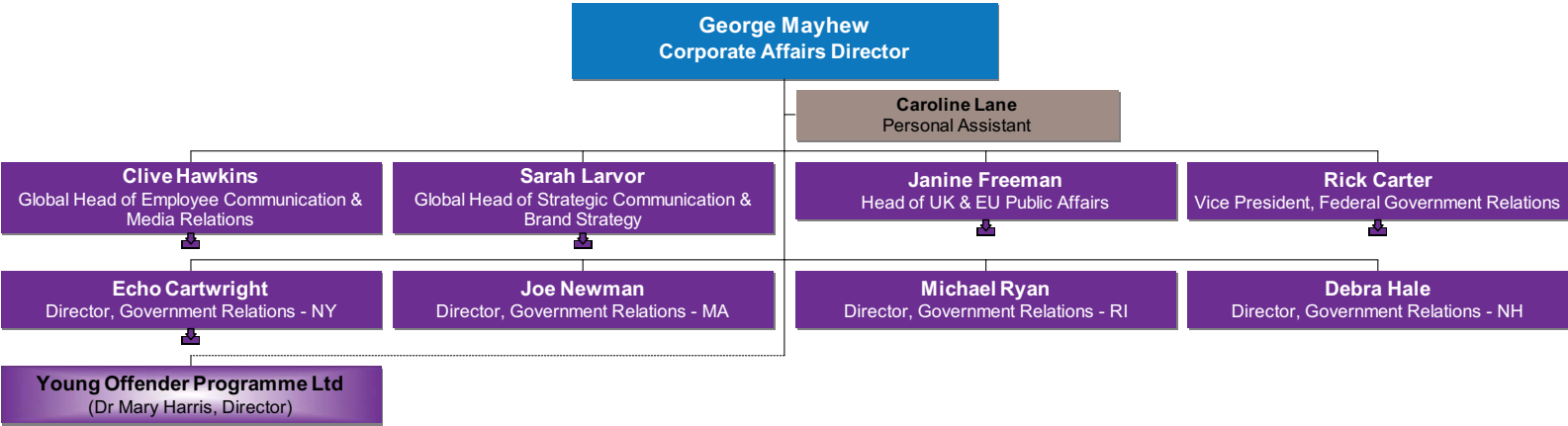
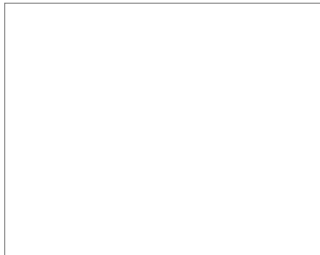
# US Customer



# US Customer



# Corporate Affairs





Commission 3-22-ELEC/GAS

Request:

Referring to the organizational chart produced in the Company's Response to COMM 2-16-ELEC/GAS, please answer the following:

- a. Which vacancies represent new positions?
- b. Does the Company intend to fill all of the vacancies that appear on this chart?

Response:

- a. The vacancies on the organizational chart provided in Attachment COMM 2-16-1-ELEC/GAS to the Company's response to Commission 2-16-ELEC/GAS reflect open positions that were created as a result of the management restructuring in 2011. The vacancies on the organization chart are not necessarily new positions; however, as Company Witness Maureen P. Heaphy stated on Page 6 of her Direct Testimony, the vacant positions that have been created in the new organization require individual skill sets that, in many cases, have required, or will require, National Grid to look for qualified candidates outside the organization to fill those positions. In addition, responsibilities may have been expanded for certain positions that would cause National Grid to look for qualified candidates outside the organization to fill those positions.
- b. No, there are six vacancies listed on the organizational chart that have since been canceled and the Company has stopped recruiting for those positions. The costs for four of these positions were included on Schedule MDL-3-ELEC and Schedule MDL-3-GAS for both Narragansett Electric and Narragansett Gas, respectively, that should be excluded from the revenue requirement. The amount of the revenue requirement overstatement related to these four vacancies is \$24,599 and \$13,257 for Narragansett Electric and Narragansett Gas, respectively.