

September 7, 2012

**VIA HAND DELIVERY & ELECTRONIC MAIL**

Luly E. Massaro, Commission Clerk  
Rhode Island Public Utilities Commission  
89 Jefferson Boulevard  
Warwick, RI 02888

**RE: Docket 4323 - Application for Approval of a Change in Electric and Gas Base Distribution Rates Pursuant to R.I.G.L. Sections 39-3-10 and 39-3-11 Responses to Commission Data Requests - Set 5 - ELEC/GAS**

Dear Ms. Massaro:

Enclosed is an original and ten (10) copies of National Grid's<sup>1</sup> responses to the Commission's Fifth Set of Data Requests in the above-captioned proceeding.

The responses to the Fifth Set included with this filing are listed in the enclosed discovery log.

Thank you for your attention to this transmittal. If you have any questions, please feel free to contact me at (401) 784-7667.

Very truly yours,



Thomas R. Teehan

Enclosures

cc: Docket 4323 Service List  
Leo Wold, Esq.  
Steve Scialabba, Division

---

<sup>1</sup> The Narragansett Electric Company d/b/a National Grid (herein referred to as "National Grid" or the "Company").

## Certificate of Service

I hereby certify that a copy of the cover letter and/or any materials accompanying this certificate were electronically submitted, hand delivered and mailed to the individuals listed below.

/S/  
Janea Dunne

September 7, 2012  
Date

**National Grid (NGrid) – Request for Change in Electric & Gas Distribution Rates**  
**Docket No. 4323 – Service List updated on 6/22/12**

<b>Name/Address</b>	<b>E-mail Distribution</b>	<b>Phone</b>
Celia B. O'Brien, Esq. National Grid 280 Melrose St. Providence, RI 02907	<a href="mailto:Celia.obrien@us.ngrid.com">Celia.obrien@us.ngrid.com</a>	781-907-2153
Thomas R. Teehan, Esq. National Grid 280 Melrose St. Providence, RI 02907	<a href="mailto:Thomas.teehan@us.ngrid.com">Thomas.teehan@us.ngrid.com</a>	401-784-7667
	<a href="mailto:Jennifer.hutchinson@us.ngrid.com">Jennifer.hutchinson@us.ngrid.com</a>	
	<a href="mailto:Joanne.scanlon@us.ngrid.com">Joanne.scanlon@us.ngrid.com</a>	
Cheryl M. Kimball, Esq. (for NGrid) Keegan Werlin LLP 265 Franklin Street Boston, MA 02110	<a href="mailto:ckimball@keeganwerlin.com">ckimball@keeganwerlin.com</a>	617-951-1400
	<a href="mailto:lindas@keeganwerlin.com">lindas@keeganwerlin.com</a>	
Gerald Petros, Esq. Hinckley, Allen & Snyder	<a href="mailto:gpetros@haslaw.com">gpetros@haslaw.com</a>	
	<a href="mailto:aramos@haslaw.com">aramos@haslaw.com</a>	
Leo Wold, Esq. (for Division) Dept. of Attorney General 150 South Main St. Providence, RI 02903	<a href="mailto:Lwold@riag.ri.gov">Lwold@riag.ri.gov</a>	401-222-2424
	<a href="mailto:dmacrae@riag.ri.gov">dmacrae@riag.ri.gov</a>	
	<a href="mailto:Steve.scialabba@ripuc.state.ri.us">Steve.scialabba@ripuc.state.ri.us</a>	
	<a href="mailto:David.stearns@ripuc.state.ri.us">David.stearns@ripuc.state.ri.us</a>	
Michael J. Morrissey, Esq. (for AG) Dept. of Attorney General 150 South Main St. Providence, RI 02903	<a href="mailto:Mmorrissey@riag.ri.gov">Mmorrissey@riag.ri.gov</a>	401-274-4400 Ext. 2357
Ellen M. Evans, Sr. Trial Atty. Naval Facilities Engineering Command Litigation Office 720 Kennon St., Bldg. 36, Room 233 Washington Navy Yard, DC 20374-5051	<a href="mailto:ellen.evans@navy.mil">ellen.evans@navy.mil</a>	202-685-2235
Dr. Kay Davoodi, P.E. Utility Rates and Studies Office NAVFACHQ- Building 33 1322 Patterson Ave SE Washington Navy Yard, D.C. 20374-5065	<a href="mailto:Khojasteh.davoodi@navy.mil">Khojasteh.davoodi@navy.mil</a>	202-685-3319
	<a href="mailto:Larry.r.allen@navy.mil">Larry.r.allen@navy.mil</a>	
Robert J. McConnell, Esq. (Wiley Ctr.) Motley Rice LLC	<a href="mailto:bmccConnell@motleyrice.com">bmccConnell@motleyrice.com</a>	401-457-7700

321 South Main St. – 2 <sup>nd</sup> Floor Providence, RI 02903	<a href="mailto:jhowat@nclc.org">jhowat@nclc.org</a>	
Maurice Brubaker Brubaker and Associates, Inc. PO Box 412000 St.Louis, MO 63141-2000	<a href="mailto:mbrubaker@consultbai.com">mbrubaker@consultbai.com</a>	401-724-3600
Ali Al-Jabir Brubaker and Associates, Inc.	<a href="mailto:aaljagir@consultbai.com">aaljabir@consultbai.com</a>	
David Effron Berkshire Consulting 12 Pond Path North Hampton, NH 03862-2243	<a href="mailto:Djeffron@aol.com">Djeffron@aol.com</a>	603-964-6526
Bruce Oliver Revalo Hill Associates 7103 Laketree Drive Fairfax Station, VA 22039	<a href="mailto:Boliver.rha@verizon.net">Boliver.rha@verizon.net</a>	
Alex Cochis Lee Smith LaCapra Associates One Washington Mall 9th Floor Boston, MA 02108	<a href="mailto:acochis@lacapra.com">acochis@lacapra.com</a>	
	<a href="mailto:lees@lacapra.com">lees@lacapra.com</a>	
Thomas Catlin Emma Nicholson Exeter Associates 10480 Little Patuxent Parkway Suite 300 Columbia, Maryland 21044	<a href="mailto:tcatlin@exeterassociates.com">tcatlin@exeterassociates.com</a>	
	<a href="mailto:enicholson@exeterassociates.com">enicholson@exeterassociates.com</a>	
Bruce Gay Monticello Consulting 4209 Buck Creek Court North Charleston, SC 29420	<a href="mailto:bruce@monticelloconsulting.com">bruce@monticelloconsulting.com</a>	
Matthew Kahal c/o Exeter Associates 10480 Little Patuxent Parkway Suite 300 Columbia, MD 21044	<a href="mailto:mkahal@exeterassociates.com">mkahal@exeterassociates.com</a>	
<b>File original &amp; 11 copies w/:</b> Luly E. Massaro, Commission Clerk Public Utilities Commission 89 Jefferson Blvd. Warwick, RI 02888	<a href="mailto:Lmassaro@puc.state.ri.us">Lmassaro@puc.state.ri.us</a>	401-780-2107
	<a href="mailto:Anault@puc.state.ri.us">Anault@puc.state.ri.us</a>	
	<a href="mailto:Adalessandro@puc.state.ri.us">Adalessandro@puc.state.ri.us</a>	
	<a href="mailto:Nucci@puc.state.ri.us">Nucci@puc.state.ri.us</a>	
	<a href="mailto:Dshah@puc.state.ri.us">Dshah@puc.state.ri.us</a>	
	<a href="mailto:Sccamara@puc.state.ri.us">Sccamara@puc.state.ri.us</a>	

The Narragansett Electric Company  
d/b/a National Grid  
R.I.P.U.C. Docket No. 4323  
Discovery Log

DATA SET	DATA REQUEST	DATE ISSUED	DATE FILED	WITNESS	ATTACHMENT	CONFIDENTIAL ATTACHMENT
<b>DIVISION SET 1</b>						
Division Set 1	Division 1-1-ELEC	5/9/2012	<b>5/25/2012</b>	Michael D. Laflamme	Att. DIV 1-1-ELEC	
Division Set 1	Division 1-2-ELEC	5/9/2012	<b>5/25/2012</b>	Michael D. Laflamme	Att. DIV 1-2-ELEC	
Division Set 1	Division 1-3-ELEC	5/9/2012	<b>5/25/2012</b>	Michael D. Laflamme	Att. DIV 1-3-ELEC	
Division Set 1	Division 1-4-ELEC	5/9/2012	<b>5/25/2012</b>	Michael D. Laflamme	Att. DIV 1-4-ELEC	
Division Set 1	Division 1-5-ELEC	5/9/2012	<b>5/25/2012</b>	Michael D. Laflamme		
Division Set 1	Division 1-6-ELEC	5/9/2012	<b>5/23/2012</b>	Michael D. Laflamme	Att. DIV 1-6-ELEC	
Division Set 1	Division 1-7-ELEC	5/9/2012	<b>5/23/2012</b>	Michael D. Laflamme		
Division Set 1	Division 1-8-ELEC	5/9/2012	<b>5/25/2012</b>	Michael D. Laflamme	Att. DIV 1-8-ELEC	
Division Set 1	Division 1-9-ELEC	5/9/2012	<b>5/23/2012</b>	Michael D. Laflamme	Att. DIV 1-9-ELEC	
Division Set 1	Division 1-10-ELEC	5/9/2012	<b>5/25/2012</b>	Michael D. Laflamme		
Division Set 1	Division 1-11-ELEC	5/9/2012	<b>5/23/2012</b>	Michael D. Laflamme	Att. DIV 1-11-ELEC	
Division Set 1	Division 1-12-ELEC	5/9/2012	<b>5/23/2012</b>	Michael D. Laflamme		
Division Set 1	Division 1-13-ELEC	5/9/2012	<b>5/23/2012</b>	Michael D. Laflamme	Att. DIV 1-13-ELEC	
Division Set 1	Division 1-14-ELEC	5/9/2012	<b>5/23/2012</b>	Michael D. Laflamme		
Division Set 1	Division 1-15-ELEC	5/9/2012	<b>5/23/2012</b>	Michael D. Laflamme		
Division Set 1	Division 1-16-ELEC	5/9/2012	<b>5/23/2012</b>	Michael D. Laflamme		
Division Set 1	Division 1-17-ELEC	5/9/2012	<b>5/23/2012</b>	Michael D. Laflamme		
Division Set 1	Division 1-18-ELEC	5/9/2012	<b>5/23/2012</b>	Michael D. Laflamme		
Division Set 1	Division 1-19-ELEC	5/9/2012	<b>5/23/2012</b>	Michael D. Laflamme		
Division Set 1	Division 1-20-ELEC	5/9/2012	<b>5/25/2012</b>	Michael D. Laflamme		
Division Set 1	Division 1-21-ELEC	5/9/2012	<b>5/23/2012</b>	Michael D. Laflamme	Att. DIV 1-21-ELEC	
Division Set 1	Division 1-22-ELEC	5/9/2012	<b>5/23/2012</b>	Michael D. Laflamme		
Division Set 1	Division 1-23-ELEC	5/9/2012	<b>5/23/2012</b>	Michael D. Laflamme	Att. DIV 1-23-ELEC	
Division Set 1	Division 1-24-ELEC	5/9/2012	<b>5/25/2012</b>	Michael D. Laflamme		
Division Set 1	Division 1-25-ELEC	5/9/2012	<b>5/23/2012</b>	Michael D. Laflamme		
Division Set 1	Division 1-26-ELEC	5/9/2012	<b>5/23/2012</b>	Michael D. Laflamme		
Division Set 1	Division 1-27-ELEC	5/9/2012	<b>5/23/2012</b>	Michael D. Laflamme	Att. DIV 1-27-ELEC	
Division Set 1	Division 1-28-ELEC	5/9/2012	<b>5/23/2012</b>	Michael D. Laflamme		

The Narragansett Electric Company  
d/b/a National Grid  
R.I.P.U.C. Docket No. 4323  
Discovery Log

DATA SET	DATA REQUEST	DATE ISSUED	DATE FILED	WITNESS	ATTACHMENT	CONFIDENTIAL ATTACHMENT
Division Set 1	Division 1-29-ELEC	5/9/2012	5/23/2012	Michael D. Laflamme	Att. DIV 1-29-ELEC	
Division Set 1	Division 1-30-ELEC	5/9/2012	5/23/2012	Michael D. Laflamme		
Division Set 1	Division 1-31-ELEC	5/9/2012	5/23/2012	Michael D. Laflamme		
<b>DIVISION SET 2</b>						
Division Set 2	Division 2-1-GAS	5/14/2012	5/25/2012	Michael D. Laflamme	Att. DIV 2-1-GAS	
Division Set 2	Division 2-2-GAS	5/14/2012	5/25/2012	Michael D. Laflamme	Att. DIV 2-2-GAS	
Division Set 2	Division 2-3-GAS	5/14/2012	5/25/2012	Michael D. Laflamme		
Division Set 2	Division 2-4-GAS	5/14/2012	5/25/2012	Michael D. Laflamme	Att. DIV 2-4-GAS	
Division Set 2	Division 2-5-GAS	5/14/2012	5/25/2012	Michael D. Laflamme		
Division Set 2	Division 2-6-GAS	5/14/2012	5/25/2012	Michael D. Laflamme	Att. DIV 2-6-GAS	
Division Set 2	Division 2-7-GAS	5/14/2012	5/25/2012	Michael D. Laflamme	Att. DIV 2-7-GAS	
Division Set 2	Division 2-8-GAS	5/14/2012	5/25/2012	Michael D. Laflamme	Att. DIV 2-8-GAS	
Division Set 2	Division 2-9-GAS	5/14/2012	5/25/2012	Michael D. Laflamme	Att. DIV 2-9-GAS	
Division Set 2	Division 2-10-GAS	5/14/2012	5/29/2012	Michael D. Laflamme		
Division Set 2	Division 2-11-GAS	5/14/2012	5/29/2012	Michael D. Laflamme		
Division Set 2	Division 2-12-GAS	5/14/2012	5/25/2012	Michael D. Laflamme	Att. DIV 2-12-GAS	
Division Set 2	Division 2-13-GAS	5/14/2012	5/29/2012	Michael D. Laflamme		
Division Set 2	Division 2-14-GAS	5/14/2012	5/29/2012	Michael D. Laflamme		
Division Set 2	Division 2-15-GAS	5/14/2012	5/29/2012	Michael D. Laflamme		
Division Set 2	Division 2-16-GAS	5/14/2012	5/29/2012	Michael D. Laflamme	Att. DIV 2-16-1-GAS Att. DIV 2-16-2-GAS Att. DIV 2-16-3-GAS	
Division Set 2	Division 2-17-GAS	5/14/2012	5/29/2012	Michael D. Laflamme		
Division Set 2	Division 2-18-GAS	5/14/2012	5/29/2012	Michael D. Laflamme		
Division Set 2	Division 2-19-GAS	5/14/2012	5/29/2012	Michael D. Laflamme		
Division Set 2	Division 2-20-GAS	5/14/2012	5/29/2012	Michael D. Laflamme		
Division Set 2	Division 2-21-GAS	5/14/2012	5/29/2012	Michael D. Laflamme	Att. DIV 2-21-GAS	
Division Set 2	Division 2-22-GAS	5/14/2012	5/29/2012	Michael D. Laflamme	Att. DIV 2-22-GAS	
Division Set 2	Division 2-23-GAS	5/14/2012	5/29/2012	Michael D. Laflamme	Att. DIV 2-23-GAS	
Division Set 2	Division 2-24-GAS	5/14/2012	5/29/2012	Michael D. Laflamme		

The Narragansett Electric Company  
d/b/a National Grid  
R.I.P.U.C. Docket No. 4323  
Discovery Log

DATA SET	DATA REQUEST	DATE ISSUED	DATE FILED	WITNESS	ATTACHMENT	CONFIDENTIAL ATTACHMENT
Division Set 2	Division 2-25-GAS	5/14/2012	5/29/2012	Michael D. Laflamme		
<b>DIVISION SET 3</b>						
Division Set 3	Division 3-1-ELEC/GAS	5/30/2012	6/11/2012	Michael D. Laflamme	Att. DIV 3-1-ELEC/GAS	
Division Set 3	Division 3-2-ELEC/GAS	5/30/2012	6/13/2012	Michael D. Laflamme	Att. DIV 3-2-ELEC/GAS	
Division Set 3	Division 3-3-ELEC/GAS	5/30/2012	6/12/2012	Robert B. Hevert	Att. DIV 3-3-ELEC/GAS	
Division Set 3	Division 3-4-ELEC/GAS	5/30/2012	6/12/2012	Robert B. Hevert		
Division Set 3	Division 3-5-ELEC/GAS	5/30/2012	6/12/2012	Robert B. Hevert	Att. DIV 3-5-ELEC/GAS	
Division Set 3	Division 3-6-ELEC/GAS	5/30/2012	6/13/2012	Michael D. Laflamme	Att. DIV 3-6-ELEC/GAS (REDACTED)	Att. DIV 3-6-ELEC/GAS (CONFIDENTIAL)
Division Set 3	Division 3-7-ELEC/GAS	5/30/2012	6/11/2012	Michael D. Laflamme	Att. DIV 3-7-1-ELEC/GAS Att. DIV 3-7-2-ELEC/GAS Att. DIV 3-7-3-ELEC/GAS	
Division Set 3	Division 3-8-ELEC/GAS	5/30/2012	6/12/2012	Legal Department and Robert B. Hevert		
Division Set 3	Division 3-9-ELEC/GAS	5/30/2012	6/11/2012	Mustally Hussain	Att. DIV 3-9-1-ELEC/GAS Att. DIV 3-9-2-ELEC/GAS Att. DIV 3-9-3-ELEC/GAS Att. DIV 3-9-4-ELEC/GAS Att. DIV 3-9-5-ELEC/GAS Att. DIV 3-9-6-ELEC/GAS Att. DIV 3-9-7-ELEC/GAS Att. DIV 3-9-8-ELEC/GAS Att. DIV 3-9-9-ELEC/GAS	
Division Set 3	Division 3-10-ELEC/GAS	5/30/2012	6/11/2012	Mustally Husain	Att. DIV 3-10-ELEC/GAS	
Division Set 3	Division 3-11-ELEC/GAS	5/30/2012	6/11/2012	Michael D. Laflamme	Att. DIV 3-11-ELEC/GAS	
Division Set 3	Division 3-12-ELEC/GAS	5/30/2012	6/11/2012	Michael D. Laflamme		
Division Set 3	Division 3-13-ELEC/GAS	5/30/2012	6/11/2012	Michael D. Laflamme		
Division Set 3	Division 3-14-ELEC/GAS	5/30/2012	6/13/2012	Michael D. Laflamme		
Division Set 3	Division 3-15-ELEC/GAS	5/30/2012	6/11/2012	Michael D. Laflamme		
Division Set 3	Division 3-16-ELEC/GAS	5/30/2012	6/11/2012	Michael D. Laflamme		
Division Set 3	Division 3-17-ELEC/GAS	5/30/2012	6/11/2012	Michael D. Laflamme	Att. DIV 3-17-ELEC/GAS	
Division Set 3	Division 3-18-ELEC/GAS	5/30/2012	6/12/2012	Robert B. Hevert		
Division Set 3	Division 3-19-ELEC	5/30/2012	6/12/2012	Robert B. Hevert		
Division Set 3	Division 3-20-ELEC/GAS	5/30/2012	6/12/2012	Robert B. Hevert		
Division Set 3	Division 3-21-ELEC/GAS	5/30/2012	6/12/2012	Robert B. Hevert		
Division Set 3	Division 3-22-ELEC/GAS	5/30/2012	6/12/2012	Robert B. Hevert	Att. DIV 3-22-ELEC/GAS	

DATA SET	DATA REQUEST	DATE ISSUED	DATE FILED	WITNESS	ATTACHMENT	CONFIDENTIAL ATTACHMENT
Division Set 3	Division 3-23-ELEC/GAS	5/30/2012	6/12/2012	Robert B. Hevert	Att. DIV 3-23-ELEC/GAS	
Division Set 3	Division 3-24-ELEC/GAS	5/30/2012	6/13/2012	Robert B. Hevert	Att. DIV 3-24-ELEC/GAS	
Division Set 3	Division 3-25-ELEC/GAS	5/30/2012	6/12/2012	Robert B. Hevert	Att. DIV 3-25-ELEC/GAS	
Division Set 3	Division 3-26-ELEC/GAS	5/30/2012	6/12/2012	Robert B. Hevert		
Division Set 3	Division 3-27-ELEC/GAS	5/30/2012	6/12/2012	Robert B. Hevert		
<b>DIVISION SET 4</b>						
Division Set 4	Division 4-1-GAS	6/7/2012	6/29/2012	Paul M. Normand	See Attached Page	See Attached Page
Division Set 4	Division 4-2-GAS	6/7/2012	6/19/2012	Paul M. Normand		
Division Set 4	Division 4-3-GAS	6/7/2012	6/20/2012	Ann E. Leary		
Division Set 4	Division 4-4-GAS	6/7/2012	6/19/2012	Paul M. Normand		
Division Set 4	Division 4-5-GAS	6/7/2012	6/19/2012	Paul M. Normand		
Division Set 4	Division 4-6-GAS	6/7/2012	6/20/2012	Ann E. Leary		
Division Set 4	Division 4-7-GAS	6/7/2012	6/20/2012	Ann E. Leary		
Division Set 4	Division 4-8-GAS	6/7/2012	6/19/2012	Ann E. Leary	Att. DIV 4-8-1-GAS Att. DIV 4-8-2-GAS Att. DIV 4-8-3-GAS Att. DIV 4-8-4-GAS Att. DIV 4-8-5-GAS	
Division Set 4	Division 4-9-GAS	6/7/2012	6/20/2012	Ann E. Leary		
Division Set 4	Division 4-10-GAS	6/7/2012	6/19/2012	Ann E. Leary	Att. DIV 4-10-GAS	
Division Set 4	Division 4-11-GAS	6/7/2012	6/20/2012	Ann E. Leary		
Division Set 4	Division 4-12-GAS	6/7/2012	6/20/2012	Ann E. Leary	Att. DIV 4-12-GAS	
Division Set 4	Division 4-13-GAS	6/7/2012	6/19/2012	Ann E. Leary and Michael D. Laflamme		
<b>DIVISION SET 5</b>						
Division Set 5	Division 5-1-ELEC	6/8/2012	6/26/2012	Evelyn M. Kaye	Att. DIV 5-1-ELEC	
Division Set 5	Division 5-2-ELEC	6/8/2012	6/29/2012	Evelyn M. Kaye	Att. DIV 5-2-1-ELEC Att. DIV 5-2-2-ELEC Att. DIV 5-2-3-ELEC	
Division Set 5	Division 5-3-ELEC	6/8/2012	6/26/2012	Evelyn M. Kaye	Att. DIV 5-3-1-ELEC Att. DIV 5-3-2-ELEC	
Division Set 5	Division 5-3-ELEC (Corrected)	6/8/2012	7/2/2012	Evelyn M. Kaye		

Division Set 4

Division 4-1-GAS

**ATTACHMENT**

**CONFIDENTIAL  
ATTACHMENT**

1-18 Design Winter Sales RATE YEAR Rev 4-2-12.xls

Att DIV 5-12 Meter Cost Detail MAC\_B.xls

Attach 1-2B(Test Year PLT ACCUMDEPR Acct) with Rate Year Adj 4-6.xls

Attach 1-17 with Back-up (CY11\_Charge\_off (W Philibin 02 15 12)).xls

Attach 1-24 (Services Inv Allocator) MAC.xls

Attach 1-26 RATE YEAR (REG ACCNT 903000 CustRecordsColl Exp).xls

Attach 1-27 RATE YEAR (ACCNT 908000 Cust Assistance Exp).xls

Attach 1-29 with backup (6967 RI GAS SALES REPORT DEC11) MAC.xls

Attachment to 1-11 (Rev Proof & Bill Detm)\_A.xls

Bill Impact-(2014 Base Rates and ISR for Rate Year template)\_H AEL\_1.xls

NG RI Design Day Rate Year Rev 3-20-12 (LS).xls

NG RI Gas Rate Design 4-16-12 B PMN - 7.xls

Ngrid No 1-28 (Deposits) (3).docx

RDA & ISR Adj by Rate Class.xls

RI Gas Allocated COS 4-13-12 MAC.xlsx

NGRI-GCOS Rate Year Revised 4-16-12 WITH ISR & RDA Revenues  
PRO.xls

NGRI-GCOS Rate Year Revised 4-16-12 WITH ISR & RDA Revenues  
PRO.xls

(REDACTED)

(CONFIDENTIAL)



The Narragansett Electric Company  
d/b/a National Grid  
R.I.P.U.C. Docket No. 4323  
Discovery Log

DATA SET	DATA REQUEST	DATE ISSUED	DATE FILED	WITNESS	ATTACHMENT	CONFIDENTIAL ATTACHMENT
Division Set 5	Division 5-4-ELEC	6/8/2012	6/22/2012	Evelyn M. Kaye	Att. DIV 5-4-ELEC	
Division Set 5	Division 5-5-ELEC	6/8/2012	6/22/2012	Evelyn M. Kaye	Att. DIV 5-5-1-ELEC Att. DIV 5-5-2-ELEC	
Division Set 5	Division 5-6-ELEC	6/8/2012	6/22/2012	Evelyn M. Kaye	Att. DIV 5-6-1-ELEC Att. DIV 5-6-2-ELEC Att. DIV 5-6-3-ELEC	
Division Set 5	Division 5-7-ELEC	6/8/2012	6/22/2012	Evelyn M. Kaye		
Division Set 5	Division 5-8-ELEC	6/8/2012	6/22/2012	Evelyn M. Kaye		
Division Set 5	Division 5-9-ELEC	6/8/2012	6/26/2012	Evelyn M. Kaye	Att. DIV 5-9-ELEC	
Division Set 5	Division 5-10-ELEC	6/8/2012	6/26/2012	Evelyn M. Kaye	Att. DIV 5-10-1-ELEC Att. DIV 5-10-2-ELEC	
Division Set 5	Division 5-11-ELEC	6/8/2012	6/26/2012	Evelyn M. Kaye	Att. DIV 5-11-1-ELEC Att. DIV 5-11-2-ELEC Att. DIV 5-11-3-ELEC Att. DIV 5-11-4-ELEC	
Division Set 5	Division 5-12-ELEC	6/8/2012	6/26/2012	Evelyn M. Kaye		
Division Set 5	Division 5-13-ELEC	6/8/2012	6/22/2012	Evelyn M. Kaye		
Division Set 5	Division 5-14-ELEC	6/8/2012	6/22/2012	Evelyn M. Kaye	Att. DIV 5-14-ELEC	
Division Set 5	Division 5-15-ELEC	6/8/2012	6/22/2012	Evelyn M. Kaye	Att. DIV 5-15-ELEC	
Division Set 5	Division 5-16-ELEC	6/8/2012	6/29/2012	Evelyn M. Kaye	Att. DIV 5-16-1-ELEC Att. DIV 5-16-2-ELEC Att. DIV 5-16-3-ELEC Att. DIV 5-16-4-ELEC (REDACTED)	Att. DIV 5-16-2-ELEC Att. DIV 5-16-3-ELEC Att. DIV 5-16-4-ELEC (CONFIDENTIAL)
Division Set 5	Division 5-16-ELEC (Supplemental)	6/8/2012	7/20/2012	Evelyn M. Kaye	Att. DIV 5-16-1-ELEC Att. DIV 5-16-2-ELEC Att. DIV 5-16-3-ELEC Att. DIV 5-16-4-ELEC Supplemental (REDACTED)	Att. DIV 5-16-2-ELEC Att. DIV 5-16-3-ELEC Att. DIV 5-16-4-ELEC Supplemental (CONFIDENTIAL)
<b>DIVISION SET 6</b>						
Division Set 6	Division 6-1-GAS	6/8/2012	7/2/2012	Evelyn M. Kaye	Att. DIV 6-1-GAS	
Division Set 6	Division 6-2-GAS	6/8/2012	7/2/2012	Evelyn M. Kaye	Att. DIV 6-2-1-GAS Att. DIV 6-2-2-GAS	
Division Set 6	Division 6-2(d)-GAS (Supplemental)	6/8/2012	7/20/2012	Evelyn M. Kaye	Att. DIV 6-2(d)-GAS (Supplemental)	
Division Set 6	Division 6-3-GAS	6/8/2012	6/26/2012	Evelyn M. Kaye	Att. DIV 6-3-GAS	
Division Set 6	Division 6-3-GAS (Supplemental)	6/8/2012	7/20/2012	Evelyn M. Kaye	Att. DIV 6-3-GAS (Supplemental)	
Division Set 6	Division 6-4-GAS	6/8/2012	6/26/2012	Evelyn M. Kaye	Att. DIV 6-4-1-GAS Att. DIV 6-4-2-GAS	
Division Set 6	Division 6-5-GAS	6/8/2012	6/26/2012	Evelyn M. Kaye	Att. DIV 6-5-GAS	

DATA SET	DATA REQUEST	DATE ISSUED	DATE FILED	WITNESS	ATTACHMENT	CONFIDENTIAL ATTACHMENT
Division Set 6	Division 6-6-GAS	6/8/2012	7/2/2012	Evelyn M. Kaye	Att. DIV 6-6-1-GAS Att. DIV 6-6-2-GAS Att. DIV 6-6-3-GAS (REDACTED)	Att. DIV 6-6-2-GAS Att. DIV 6-6-3-GAS (CONFIDENTIAL)
Division Set 6	Division 6-7-GAS	6/8/2012	6/22/2012	Evelyn M. Kaye		
Division Set 6	Division 6-8-GAS	6/8/2012	6/22/2012	Evelyn M. Kaye		
Division Set 6	Division 6-9-GAS	6/8/2012	6/26/2012	Evelyn M. Kaye		
Division Set 6	Division 6-9-GAS (Supplemental)	6/8/2012	7/20/2012	Evelyn M. Kaye	Att. DIV 6-9-GAS (Supplemental)	
Division Set 6	Division 6-10-GAS	6/8/2012	6/26/2012	Evelyn M. Kaye	Att. DIV 6-10-1-GAS Att. DIV 6-10-2-GAS	
Division Set 6	Division 6-11-GAS	6/8/2012	6/26/2012	Evelyn M. Kaye		
Division Set 6	Division 6-12-GAS	6/8/2012	6/26/2012	Evelyn M. Kaye		
Division Set 6	Division 6-13-GAS	6/8/2012	6/22/2012	Evelyn M. Kaye		
Division Set 6	Division 6-14-GAS	6/8/2012	6/26/2012	Evelyn M. Kaye	Att. DIV 6-14-GAS	
Division Set 6	Division 6-15-GAS	6/8/2012	6/26/2012	Evelyn M. Kaye	Att. DIV 6-15-1-GAS Att. DIV 6-15-2-GAS Att. DIV 6-15-3-GAS	
Division Set 6	Division 6-16-GAS	6/8/2012	7/2/2012	Evelyn M. Kaye	Att. DIV 6-16-1-GAS Att. DIV 6-16-2-GAS Att. DIV 6-16-3-GAS Att. DIV 6-16-4-GAS Att. DIV 6-16-5-GAS (REDACTED)	Att. DIV 6-16-1-GAS Att. DIV 6-16-2-GAS Att. DIV 6-16-3-GAS Att. DIV 6-16-4-GAS Att. DIV 6-16-5-GAS (CONFIDENTIAL)
Division Set 6	Division 6-16-GAS (Supplemental)	6/8/2012	7/23/2012	Evelyn M. Kaye	Att. DIV 6-16-1-GAS Att. DIV 6-16-2-GAS Att. DIV 6-16-3-GAS Att. DIV 6-16-4-GAS Att. DIV 6-16-5-GAS Att. DIV 6-16-6-GAS Att. DIV 6-16-7-GAS Supplemental (REDACTED)	Att. DIV 6-16-1-GAS Att. DIV 6-16-2-GAS Att. DIV 6-16-3-GAS Att. DIV 6-16-4-GAS Att. DIV 6-16-5-GAS Supplemental (CONFIDENTIAL)
Division Set 6	Attachment Division 6-16-4-GAS (Supplemental) (Corrected)	6/8/2012	8/7/2012	Evelyn M. Kaye		Att. DIV 6-16-4-GAS (CONFIDENTIAL)
<b>DIVISION SET 7</b>						
Division Set 7	Division 7-1-GAS	6/12/2012	7/5/2012	Evelyn M. Kaye	Att. DIV 7-1-GAS	
Division Set 7	Division 7-2-ELEC	6/12/2012	7/5/2012	Evelyn M. Kaye	Att. DIV 7-2-GAS	
Division Set 7	Division 7-3-ELEC/GAS	6/12/2012	7/5/2012	Evelyn M. Kaye	Att. DIV 7-3-1-ELEC/GAS Att. DIV 7-3-2-ELEC/GAS Att. DIV 7-3-3-ELEC/GAS	

DATA SET	DATA REQUEST	DATE ISSUED	DATE FILED	WITNESS	ATTACHMENT	CONFIDENTIAL ATTACHMENT
Division Set 7	Division 7-4-ELEC/GAS	6/12/2012	7/5/2012	Evelyn M. Kaye		
Division Set 7	Division 7-5-ELEC/GAS	6/12/2012	6/28/2012	Evelyn M. Kaye	Att. DIV 7-5-ELEC/GAS	
Division Set 7	Division 7-6-ELEC	6/12/2012	6/25/2012	Evelyn M. Kaye		
Division Set 7	Division 7-7-GAS	6/12/2012	6/25/2012	Evelyn M. Kaye		
Division Set 7	Division 7-8-ELEC/GAS	6/12/2012	6/28/2012	Evelyn M. Kaye		
<b>DIVISION SET 8</b>						
Division Set 8	Division 8-1-ELEC	6/14/2012	6/25/2012	Michael D. Laflamme	Att. DIV 8-1-ELEC	
Division Set 8	Division 8-2-ELEC	6/14/2012	6/25/2012	Michael D. Laflamme	Att. DIV 8-2-ELEC	
Division Set 8	Division 8-3-ELEC	6/14/2012	7/3/2012	Michael D. Laflamme	Att. DIV 8-3-ELEC	
Division Set 8	Division 8-4-ELEC	6/14/2012	6/25/2012	Michael D. Laflamme		
Division Set 8	Division 8-5-ELEC	6/14/2012	7/5/2012	Michael D. Laflamme	Att. DIV 8-5-ELEC	
Division Set 8	Division 8-6-ELEC	6/14/2012	7/6/2012	Michael D. Laflamme	Att. DIV 8-6-ELEC	
Division Set 8	Division 8-7-ELEC	6/14/2012	7/12/2012	Maureen P. Heaphy	Att. DIV 8-7-ELEC	
Division Set 8	Division 8-8-ELEC	6/14/2012	6/25/2012	Michael D. Laflamme		
Division Set 8	Division 8-9-ELEC	6/14/2012	6/27/2012	Michael D. Laflamme		
Division Set 8	Division 8-10-ELEC	6/14/2012	6/25/2012	Michael D. Laflamme		
Division Set 8	Division 8-11-ELEC	6/14/2012	6/27/2012	Michael D. Laflamme		
Division Set 8	Division 8-12-ELEC	6/14/2012	6/27/2012	Michael D. Laflamme		
Division Set 8	Division 8-13-ELEC	6/14/2012	7/6/2012	Michael D. Laflamme		
Division Set 8	Division 8-14-ELEC	6/14/2012	6/27/2012	Michael D. Laflamme		
Division Set 8	Division 8-15-ELEC	6/14/2012	6/27/2012	Michael D. Laflamme	Att. DIV 8-15-1-ELEC Att. DIV 8-15-2-ELEC	
Division Set 8	Division 8-16-ELEC	6/14/2012	6/27/2012	Michael D. Laflamme	Att. DIV 8-16-ELEC	
<b>DIVISION SET 9</b>						
Division Set 9	Division 9-1-GAS	6/14/2012	7/2/2012	Michael D. Laflamme		
Division Set 9	Division 9-2-GAS	6/14/2012	7/2/2012	Michael D. Laflamme	Att. DIV 9-2-GAS	
Division Set 9	Division 9-3-GAS	6/14/2012	6/27/2012	Michael D. Laflamme		
Division Set 9	Division 9-4-GAS	6/14/2012	6/27/2012	Michael D. Laflamme & Susan L. Fleck		
Division Set 9	Division 9-5-GAS	6/14/2012	6/27/2012	A. Leo Silvestrini		
Division Set 9	Division 9-6-GAS	6/14/2012	6/27/2012	A. Leo Silvestrini	Att. DIV 9-6-GAS	

The Narragansett Electric Company  
d/b/a National Grid  
R.I.P.U.C. Docket No. 4323  
Discovery Log

<b>DATA SET</b>	<b>DATA REQUEST</b>	<b>DATE ISSUED</b>	<b>DATE FILED</b>	<b>WITNESS</b>	<b>ATTACHMENT</b>	<b>CONFIDENTIAL ATTACHMENT</b>
Division Set 9	Division 9-7-GAS	6/14/2012	<b>6/27/2012</b>	A. Leo Silvestrini		
Division Set 9	Division 9-8-GAS	6/14/2012	<b>6/27/2012</b>	A. Leo Silvestrini	Att. DIV 9-8-GAS	
Division Set 9	Division 9-9-GAS	6/14/2012	<b>6/27/2012</b>	A. Leo Silvestrini		

DATA SET	DATA REQUEST	DATE ISSUED	DATE FILED	WITNESS	ATTACHMENT	CONFIDENTIAL ATTACHMENT
<b>DIVISION SET 10</b>						
Division Set 10	Division 10-1-ELEC	6/22/2012	<b>7/3/2012</b>	Howard S. Gorman	Att. DIV 10-1-1-ELEC Att. DIV 10-1-2-ELEC	
Division Set 10	Division 10-2-ELEC	6/22/2012	<b>7/3/2012</b>	Jeanne A. Lloyd	Att. DIV 10-2-1-ELEC Att. DIV 10-2-2-ELEC Att. DIV 10-2-3-ELEC Att. DIV 10-2-4-ELEC Att. DIV 10-2-5(1)-ELEC to Att. DIV 10-2-5(11)-ELEC Att. DIV 10-2-3-ELEC	
Division Set 10	Division 10-3-ELEC	6/22/2012	<b>7/5/2012</b>	Evelyn M. Kaye	Att. DIV 10-3-1-ELEC Att. DIV 10-3-2-ELEC	
Division Set 10	Division 10-4-ELEC	6/22/2012	<b>7/3/2012</b>	Alfred P. Morrissey	Att. DIV 10-4-ELEC	
Division Set 10	Division 10-5-ELEC	6/22/2012	<b>7/5/2012</b>	Howard S. Gorman	Att. DIV 10-5-ELEC	
Division Set 10	Division 10-6-ELEC	6/22/2012	<b>6/28/2012</b>	Howard S. Gorman		
Division Set 10	Division 10-7-ELEC	6/22/2012	<b>6/28/2012</b>	Howard S. Gorman	Att. DIV 10-7-ELEC	
Division Set 10	Division 10-8-ELEC	6/22/2012	<b>6/28/2012</b>	Howard S. Gorman		
<b>DIVISION SET 11</b>						
Division Set 11	Division 11-1-ELEC/GAS	6/25/2012	<b>7/13/2012</b>	Michael D. Laflamme	Att. DIV 11-1-1-ELEC/GAS Att. DIV 11-1-2-ELEC/GAS	
Division Set 11	Division 11-2-ELEC/GAS	6/25/2012	<b>7/6/2012</b>	Maureen P. Heaphy		
Division Set 11	Division 11-3-ELEC/GAS	6/25/2012	<b>7/6/2012</b>	Maureen P. Heaphy		
Division Set 11	Division 11-4-ELEC/GAS	6/25/2012	<b>7/13/2012</b>	Michael D. Laflamme	Att. DIV 11-4-ELEC/GAS	
Division Set 11	Division 11-5-ELEC/GAS	6/25/2012	<b>7/10/2012</b>	Michael D. Laflamme		
Division Set 11	Division 11-6-ELEC/GAS	6/25/2012	<b>7/13/2012</b>	Michael D. Laflamme	Att. DIV 11-6-1-ELEC/GAS Att. DIV 11-6-2-ELEC/GAS	
Division Set 11	Division 11-7-ELEC/GAS	6/25/2012	<b>7/13/2012</b>	Michael D. Laflamme	Att. DIV 11-7-ELEC/GAS	
Division Set 11	Division 11-8-ELEC/GAS	6/25/2012	<b>7/13/2012</b>	Michael D. Laflamme	Att. DIV 11-8-1-ELEC/GAS Att. DIV 11-8-2-ELEC/GAS Att. DIV 11-8-3-ELEC/GAS Att. DIV 11-8-4-ELEC/GAS Att. DIV 11-8-5-ELEC/GAS	
Division Set 11	Division 11-9-ELEC/GAS	6/25/2012	<b>7/12/2012</b>	Michael D. Laflamme	Att. DIV 11-9-ELEC/GAS	
Division Set 11	Division 11-10-ELEC/GAS	6/25/2012	<b>7/12/2012</b>	Michael D. Laflamme		
Division Set 11	Division 11-11-ELEC/GAS	6/25/2012	<b>7/10/2012</b>	Michael D. Laflamme	Att. DIV 11-11-ELEC/GAS	
Division Set 11	Division 11-12-ELEC/GAS	6/25/2012	<b>7/6/2012</b>	Michael D. Laflamme	Att. DIV 11-12-ELEC/GAS	
Division Set 11	Division 11-13-ELEC/GAS	6/25/2012	<b>7/6/2012</b>	Michael D. Laflamme		
Division Set 11	Division 11-14-ELEC/GAS	6/25/2012	<b>7/12/2012</b>	Michael D. Laflamme	Att. DIV 11-14-ELEC/GAS	
Division Set 11	Division 11-15-ELEC/GAS	6/25/2012	<b>7/6/2012</b>	Michael D. Laflamme		
Division Set 11	Division 11-16-ELEC/GAS	6/25/2012	<b>7/10/2012</b>	Michael D. Laflamme		

DATA SET	DATA REQUEST	DATE ISSUED	DATE FILED	WITNESS	ATTACHMENT	CONFIDENTIAL ATTACHMENT
Division Set 11	Division 11-17-ELEC/GAS	6/25/2012	<b>7/13/2012</b>	Michael D. Laflamme		
Division Set 11	Division 11-18-ELEC/GAS	6/25/2012	<b>7/12/2012</b>	Michael D. Laflamme	Att. DIV 11-18-ELEC/GAS	
Division Set 11	Division 11-19-ELEC/GAS	6/25/2012	<b>7/13/2012</b>	Michael D. Laflamme	Att. DIV 11-19-ELEC/GAS	
Division Set 11	Division 11-20-ELEC/GAS	6/25/2012	<b>7/12/2012</b>	Michael D. Laflamme	Att. DIV 11-20-ELEC/GAS	
Division Set 11	Division 11-21-ELEC/GAS	6/25/2012	<b>7/13/2012</b>	Michael D. Laflamme		
Division Set 11	Division 11-22-ELEC/GAS	6/25/2012	<b>7/6/2012</b>	Michael D. Laflamme		
Division Set 11	Division 11-23-ELEC/GAS	6/25/2012	<b>7/6/2012</b>	Michael D. Laflamme		
Division Set 11	Division 11-24-ELEC/GAS	6/25/2012	<b>7/6/2012</b>	Michael D. Laflamme		
Division Set 11	Division 11-25-ELEC/GAS	6/25/2012	<b>7/6/2012</b>	Michael D. Laflamme		
Division Set 11	Division 11-26-ELEC/GAS	6/25/2012	<b>7/6/2012</b>	Michael D. Laflamme		
<b>DIVISION SET 12</b>						
Division Set 12	Division 12-1-GAS	6/28/2012	<b>7/10/2012</b>	A. Leo Silvestrini	Att. DIV 12-1-GAS	
Division Set 12	Division 12-2-GAS	6/28/2012	<b>7/6/2012</b>	A. Leo Silvestrini	Att. DIV 12-2-GAS	
Division Set 12	Division 12-3-GAS	6/28/2012	<b>7/10/2012</b>	A. Leo Silvestrini	Att. DIV 12-3-1-GAS Att. DIV 12-3-2-GAS	
Division Set 12	Division 12-4-GAS	6/28/2012	<b>7/10/2012</b>	A. Leo Silvestrini		
Division Set 12	Division 12-5-GAS	6/28/2012	<b>7/10/2012</b>	A. Leo Silvestrini		
Division Set 12	Division 12-6-GAS	6/28/2012	<b>7/6/2012</b>	A. Leo Silvestrini		
Division Set 12	Division 12-7-GAS	6/28/2012	<b>7/10/2012</b>	A. Leo Silvestrini		
Division Set 12	Division 12-8-GAS	6/28/2012	<b>7/6/2012</b>	A. Leo Silvestrini	Att. DIV 12-8-GAS	
Division Set 12	Division 12-9-GAS	6/28/2012	<b>7/10/2012</b>	A. Leo Silvestrini		
Division Set 12	Division 12-10-GAS	6/28/2012	<b>7/10/2012</b>	A. Leo Silvestrini	Att. DIV 12-10-1-GAS Att. DIV 12-10-2-GAS Att. DIV 12-10-3-GAS	
Division Set 12	Division 12-11-GAS	6/28/2012	<b>7/6/2012</b>	A. Leo Silvestrini		
Division Set 12	Division 12-12-GAS	6/28/2012	<b>7/10/2012</b>	A. Leo Silvestrini		
Division Set 12	Division 12-13-GAS	6/28/2012	<b>7/13/2012</b>	A. Leo Silvestrini	Att. DIV 12-13-GAS	
Division Set 12	Division 12-14-GAS	6/28/2012	<b>7/6/2012</b>	A. Leo Silvestrini		
Division Set 12	Division 12-15-GAS	6/28/2012	<b>7/6/2012</b>	A. Leo Silvestrini		
Division Set 12	Division 12-16-GAS	6/28/2012	<b>7/10/2012</b>	A. Leo Silvestrini		
Division Set 12	Division 12-17-GAS	6/28/2012	<b>7/10/2012</b>	A. Leo Silvestrini	Att. DIV 12-17-GAS	

DATA SET	DATA REQUEST	DATE ISSUED	DATE FILED	WITNESS	ATTACHMENT	CONFIDENTIAL ATTACHMENT
Division Set 12	Division 12-18-GAS	6/28/2012	<b>7/13/2012</b>	A. Leo Silvestrini	Att. DIV 12-18-GAS	
Division Set 12	Division 12-19-GAS	6/28/2012	<b>7/13/2012</b>	A. Leo Silvestrini		
Division Set 12	Division 12-20-GAS	6/28/2012	<b>7/10/2012</b>	A. Leo Silvestrini		
Division Set 12	Division 12-21-GAS	6/28/2012	<b>7/10/2012</b>	A. Leo Silvestrini		
Division Set 12	Division 12-22-GAS	6/28/2012	<b>7/6/2012</b>	A. Leo Silvestrini		
Division Set 12	Division 12-23-GAS	6/28/2012	<b>7/6/2012</b>	A. Leo Silvestrini	Att. DIV 12-23-1-GAS Att. DIV 12-23-2-GAS	
Division Set 12	Division 12-24-GAS	6/28/2012	<b>7/13/2012</b>	A. Leo Silvestrini	Att. DIV 12-24-1-GAS Att. DIV 12-24-2-GAS Att. DIV 12-24-3-GAS	
Division Set 12	Division 12-25-GAS	6/28/2012	<b>7/13/2012</b>	A. Leo Silvestrini		
Division Set 12	Division 12-26-GAS	6/28/2012	<b>7/13/2012</b>	A. Leo Silvestrini		
Division Set 12	Division 12-27-GAS	6/28/2012	<b>7/13/2012</b>	Ann E. Leary	Att. DIV 12-27-GAS	
Division Set 12	Division 12-28-GAS	6/28/2012	<b>7/13/2012</b>	Ann E. Leary	Att. DIV 12-28-GAS	
Division Set 12	Division 12-29-GAS	6/28/2012	<b>7/10/2012</b>	Ann E. Leary		
Division Set 12	Division 12-30-GAS	6/28/2012	<b>7/10/2012</b>	Ann E. Leary		
<b>DIVISION SET 13</b>						
Division Set 13	Division 13-1-GAS	7/11/2012	<b>7/23/2012</b>	Paul M. Normand		
Division Set 13	Division 13-2-GAS	7/11/2012	<b>7/24/2012</b>	Paul M. Normand	Att. DIV 13-2-1-GAS Att. DIV 13-2-2-GAS Att. DIV 13-2-3-GAS Att. DIV 13-2-4-GAS Att. DIV 13-2-5-GAS Att. DIV 13-2-6-GAS Att. DIV 13-2-7-GAS	
Division Set 13	Division 13-3-GAS	7/11/2012	<b>7/23/2012</b>	Paul M. Normand		
Division Set 13	Division 13-4-GAS	7/11/2012	<b>7/23/2012</b>	Ann E. Leary	Att. DIV 13-4-GAS	
Division Set 13	Division 13-5-GAS	7/11/2012	<b>7/23/2012</b>	Paul M. Normand		
Division Set 13	Division 13-6-GAS	7/11/2012	<b>7/23/2012</b>	Ann E. Leary		
Division Set 13	Division 13-7-GAS	7/11/2012	<b>7/23/2012</b>	Ann E. Leary		
Division Set 13	Division 13-8-GAS	7/11/2012	<b>7/16/2012</b>	A. Leo Silvestrini		
Division Set 13	Division 13-9-GAS	7/11/2012	<b>7/17/2012</b>	A. Leo Silvestrini		
Division Set 13	Division 13-10-GAS	7/11/2012	<b>7/17/2012</b>	A. Leo Silvestrini		
Division Set 13	Division 13-11-GAS	7/11/2012	<b>7/17/2012</b>	A. Leo Silvestrini		
Division Set 13	Division 13-12-GAS	7/11/2012	<b>7/17/2012</b>	A. Leo Silvestrini		
Division Set 13	Division 13-13-GAS	7/11/2012	<b>7/17/2012</b>	A. Leo Silvestrini		

DATA SET	DATA REQUEST	DATE ISSUED	DATE FILED	WITNESS	ATTACHMENT	CONFIDENTIAL ATTACHMENT
<b>DIVISION SET 14</b>						
Division Set 14	Division 14-1-GAS	7/11/2012	<b>7/23/2012</b>	Evelyn M. Kaye		
Division Set 14	Division 14-2-GAS	7/11/2012	<b>7/23/2012</b>	Evelyn M. Kaye		
Division Set 14	Division 14-3-GAS	7/11/2012	<b>7/23/2012</b>	Evelyn M. Kaye		
Division Set 14	Division 14-4-GAS	7/11/2012	<b>7/23/2012</b>	Evelyn M. Kaye		
Division Set 14	Division 14-5-GAS (Redacted)	7/11/2012	<b>7/24/2012</b>	Evelyn M. Kaye		
Division Set 14	Division 14-5-GAS (Confidential)	7/11/2012	<b>7/24/2012</b>	Evelyn M. Kaye		
Division Set 14	Division 14-6-GAS	7/11/2012	<b>7/23/2012</b>	Evelyn M. Kaye		
Division Set 14	Division 14-7-GAS	7/11/2012	<b>7/23/2012</b>	Evelyn M. Kaye		
Division Set 14	Division 14-8-GAS	7/11/2012	<b>7/23/2012</b>	Evelyn M. Kaye		
Division Set 14	Division 14-9-GAS	7/11/2012	<b>7/23/2012</b>	Evelyn M. Kaye		
Division Set 14	Division 14-10-GAS	7/11/2012	<b>7/23/2012</b>	Evelyn M. Kaye		
Division Set 14	Division 14-11-GAS	7/11/2012	<b>7/23/2012</b>	Evelyn M. Kaye		
Division Set 14	Division 14-12-GAS (Redacted)	7/11/2012	<b>7/24/2012</b>	Evelyn M. Kaye	Att. DIV 14-12-GAS	
Division Set 14	Division 14-12-GAS (Confidential)	7/11/2012	<b>7/24/2012</b>	Evelyn M. Kaye		
Division Set 14	Division 14-13-GAS (Redacted)	7/11/2012	<b>7/24/2012</b>	Evelyn M. Kaye		
Division Set 14	Division 14-13-GAS (Confidential)	7/11/2012	<b>7/24/2012</b>	Evelyn M. Kaye		
<b>DIVISION SET 15</b>						
Division Set 15	Division 15-1-ELEC	7/17/2012	<b>7/26/2012</b>	Michael D. Laflamme	Att. DIV 15-1-ELEC	
Division Set 15	Division 15-2-ELEC	7/17/2012	<b>7/26/2012</b>	Michael D. Laflamme		
Division Set 15	Division 15-3-ELEC	7/17/2012	<b>7/24/2012</b>	Michael D. Laflamme	Att. DIV 15-13-ELEC	
Division Set 15	Division 15-4-ELEC	7/17/2012	<b>7/24/2012</b>	Michael D. Laflamme		
Division Set 15	Division 15-5-ELEC	7/17/2012	<b>7/24/2012</b>	Michael D. Laflamme		
Division Set 15	Division 15-6-ELEC	7/17/2012	<b>7/24/2012</b>	Michael D. Laflamme		
Division Set 15	Division 15-7-ELEC	7/17/2012	<b>7/24/2012</b>	Michael D. Laflamme		
Division Set 15	Division 15-8-ELEC	7/17/2012	<b>7/24/2012</b>	Michael D. Laflamme		
Division Set 15	Division 15-9-ELEC	7/17/2012	<b>7/26/2012</b>	Michael D. Laflamme		
Division Set 15	Division 15-10-ELEC	7/17/2012	<b>7/26/2012</b>	Michael D. Laflamme		
Division Set 15	Division 15-11-ELEC	7/17/2012	<b>7/24/2012</b>	Michael D. Laflamme		



DATA SET	DATA REQUEST	DATE ISSUED	DATE FILED	WITNESS	ATTACHMENT	CONFIDENTIAL ATTACHMENT
Division Set 15	Division 15-12-ELEC	7/17/2012	<b>8/7/2012</b>	Maureen P. Heaphy & Michael D. Laflamme	Att. DIV 15-12-ELEC	
Division Set 15	Division 15-13-ELEC	7/17/2012	<b>7/24/2012</b>	Michael D. Laflamme	Att. DIV 15-13-ELEC	
Division Set 15	Division 15-14-ELEC	7/17/2012	<b>7/26/2012</b>	Michael D. Laflamme		
Division Set 15	Division 15-15-ELEC	7/17/2012	<b>7/26/2012</b>	Michael D. Laflamme	Att. DIV 15-15-ELEC	
<b>DIVISION SET 16</b>						
Division Set 16	Division 16-1-GAS	7/17/2012	<b>7/26/2012</b>	Michael D. Laflamme	Att. DIV 16-1-GAS	
Division Set 16	Division 16-2-GAS	7/17/2012	<b>7/26/2012</b>	Michael D. Laflamme	Att. DIV 16-2-GAS	
Division Set 16	Division 16-3-GAS	7/17/2012	<b>7/26/2012</b>	Michael D. Laflamme		
Division Set 16	Division 16-4-GAS	7/17/2012	<b>7/31/2012</b>	Ann E. Leary	Att. DIV 16-4-GAS	
Division Set 16	Division 16-5-GAS	7/17/2012	<b>7/24/2012</b>	A. Leo Silvestrini	Att. DIV 16-5-GAS	
<b>DIVISION SET 17</b>						
Division Set 17	Division 17-1-ELEC	7/17/2012	<b>7/27/2012</b>	Howard S. Gorman		
Division Set 17	Division 17-2-ELEC	7/17/2012	<b>7/30/2012</b>	Alfred P. Morrissey and Jeanne A. Lloyd	Att. DIV 17-2-1-ELEC Att. DIV 17-2-2-ELEC Att. DIV 17-2-3-ELEC Att. DIV 17-2-4-ELEC	
Division Set 17	Division 17-3-ELEC	7/17/2012	<b>7/26/2012</b>	Howard S. Gorman		
Division Set 17	Division 17-4-ELEC	7/17/2012	<b>7/30/2012</b>	Jeanne A. Lloyd	Att. DIV 17-4-ELEC	
Division Set 17	Division 17-5-ELEC	7/17/2012	<b>7/26/2012</b>	Jeanne A. Lloyd		
<b>DIVISION SET 18</b>						
Division Set 18	Division 18-1-ELEC	7/20/2012	<b>7/26/2012</b>	Evelyn M. Kaye	Att. DIV 18-1-ELEC	
Division Set 18	Division 18-2-ELEC	7/20/2012	<b>7/26/2012</b>	Evelyn M. Kaye		
Division Set 18	Division 18-3-ELEC	7/20/2012	<b>7/27/2012</b>	Evelyn M. Kaye		
Division Set 18	Division 18-4-ELEC	7/20/2012	<b>8/2/2012</b>	Evelyn M. Kaye	Att. DIV 18-4-1-ELEC Att. DIV 18-4-2-ELEC Att. DIV 18-4-3-ELEC Att. DIV 18-4-4-ELEC Att. DIV 18-4-5-ELEC	
Division Set 18	Division 18-5-ELEC	7/20/2012	<b>7/30/2012</b>	Evelyn M. Kaye		
Division Set 18	Division 18-6-ELEC	7/20/2012	<b>8/2/2012</b>	Evelyn M. Kaye	Att. DIV 18-6-1-ELEC Att. DIV 18-6-2-ELEC Att. DIV 18-6-3-ELEC Att. DIV 18-6-4-ELEC	
<b>DIVISION SET 19</b>						
Division Set 19	Division 19-1-ELEC/GAS	7/25/2012	<b>8/8/2012</b>	Michael D. Laflamme	Att. DIV 19-1-ELEC/GAS	
Division Set 19	Division 19-2-ELEC/GAS	7/25/2012	<b>8/2/2012</b>	Michael D. Laflamme		

DATA SET	DATA REQUEST	DATE ISSUED	DATE FILED	WITNESS	ATTACHMENT	CONFIDENTIAL ATTACHMENT
Division Set 19	Division 19-3-ELEC/GAS	7/25/2012	8/2/2012	Michael D. Laflamme		
Division Set 19	Division 19-4-ELEC/GAS	7/25/2012	8/2/2012	Michael D. Laflamme		
Division Set 19	Division 19-5-ELEC/GAS	7/25/2012	8/2/2012	Michael D. Laflamme		
Division Set 19	Division 19-6-ELEC/GAS	7/25/2012	8/8/2012	Michael D. Laflamme	Att. DIV 19-6-ELEC/GAS	
Division Set 19	Division 19-7-ELEC/GAS	7/25/2012	7/30/2012	Maureen P. Heaphy	Att. DIV 19-7-ELEC/GAS	
Division Set 19	Division 19-8-ELEC/GAS	7/25/2012	7/30/2012	Maureen P. Heaphy		
Division Set 19	Division 19-9-ELEC/GAS	7/25/2012	8/8/2012	Michael D. Laflamme	Att. DIV 19-9-ELEC/GAS	
<b>DIVISION SET 20</b>						
Division Set 20	Division 20-1-ELEC	7/27/2012	8/9/2012	Evelyn M. Kaye	Att. DIV 20-1-1-ELEC Att. DIV 20-1-2-ELEC Att. DIV 20-1-3-ELEC (REDACTED)	Att. DIV 20-1-1-ELEC Att. DIV 20-1-2-ELEC Att. DIV 20-1-3-ELEC (CONFIDENTIAL)
Division Set 20	Division 20-2-ELEC (Redacted)	7/27/2012	8/9/2012	Evelyn M. Kaye		
Division Set 20	Division 20-2-ELEC (Confidential)	7/27/2012	8/9/2012	Evelyn M. Kaye		
Division Set 20	Division 20-3-ELEC	7/27/2012	8/9/2012	Evelyn M. Kaye		
<b>DIVISION SET 21</b>						
Division Set 21	Division 21-1-ELEC	8/1/2012	8/7/2012	Howard S. Gorman		
Division Set 21	Division 21-2-ELEC	8/1/2012	8/10/2012	Jeanne A. Lloyd		
Division Set 21	Division 21-3-ELEC	8/1/2012	8/10/2012	Jeanne A. Lloyd		
Division Set 21	Division 21-4-ELEC	8/1/2012	8/10/2012	Howard S. Gorman		
Division Set 21	Division 21-4(d)-ELEC (Supp.)	8/1/2012	8/24/2012	Howard S. Gorman & Jeanne A. Lloyd	Att. DIV 21-4 (d)-ELEC (Supp.)	
Division Set 21	Division 21-5-ELEC	8/1/2012	8/10/2012	Howard S. Gorman		
Division Set 21	Division 21-6-ELEC	8/1/2012	8/10/2012	Howard S. Gorman		
<b>DIVISION SET 22</b>						
Division Set 22	Division 22-1-GAS	8/3/2012	8/15/2012	Evelyn M. Kaye		
Division Set 22	Division 22-2-GAS	8/3/2012	8/13/2012	Evelyn M. Kaye	Att. DIV 22-2-1-GAS Att. DIV 22-2-2-GAS	
Division Set 22	Division 22-3-GAS	8/3/2012	8/7/2012	Evelyn M. Kaye		
Division Set 22	Division 22-4-ELEC	8/3/2012	8/16/2012	Evelyn M. Kaye	Att. DIV 22-4-ELEC	
Division Set 22	Division 22-5-GAS	8/3/2012	8/15/2012	Evelyn M. Kaye		
Division Set 22	Division 22-6-GAS	8/3/2012	8/15/2012	Evelyn M. Kaye		
Division Set 22	Division 22-7-GAS	8/3/2012	8/21/2012	Michael D. Laflamme		

DATA SET	DATA REQUEST	DATE ISSUED	DATE FILED	WITNESS	ATTACHMENT	CONFIDENTIAL ATTACHMENT
<b>DIVISION SET 23</b>						
Division Set 23	Division 23-1-ELEC/GAS	8/7/2012	<b>8/13/2012</b>	Michael D. Laflamme		
Division Set 23	Division 23-2-ELEC/GAS	8/7/2012	<b>8/14/2012</b>	Michael D. Laflamme		
Division Set 23	Division 23-3-ELEC/GAS	8/7/2012	<b>8/14/2012</b>	Michael D. Laflamme	Att. DIV 23-3-ELEC/GAS	
Division Set 23	Division 23-4-ELEC/GAS	8/7/2012	<b>8/14/2012</b>	Michael D. Laflamme	Att. DIV 23-4-ELEC/GAS	
Division Set 23	Division 23-5-ELEC/GAS	8/7/2012	<b>8/21/2012</b>	Michael D. Laflamme & Robert B. Hevert	Att. DIV 23-5-ELEC/GAS	
Division Set 23	Division 23-6-ELEC/GAS	8/7/2012	<b>8/14/2012</b>	Michael D. Laflamme		
Division Set 23	Division 23-7-ELEC/GAS	8/7/2012	<b>8/21/2012</b>	Robert B. Hevert & Michael D. Laflamme	Att. DIV 23-7-1-ELEC/GAS Att. DIV 23-7-2-ELEC/GAS	
Division Set 23	Division 23-8-ELEC/GAS	8/7/2012	<b>8/14/2012</b>	Robert B. Hevert		
Division Set 23	Division 23-9-ELEC/GAS	8/7/2012	<b>8/15/2012</b>	Robert B. Hevert	Att. DIV 23-9-ELEC/GAS	
<b>DIVISION SET 24</b>						
Division Set 24	Division 24-1-GAS (Redacted)	8/7/2012	<b>8/23/2012</b>	Evelyn M. Kaye		
Division Set 24	Division 24-1-GAS (Confidential)	8/7/2012	<b>8/23/2012</b>	Evelyn M. Kaye		
<b>DIVISION SET 25</b>						
Division Set 25	Division 25-1-GAS	8/9/2012	<b>8/20/2012</b>	Ann E. Leary		
Division Set 25	Division 25-2-GAS	8/9/2012	<b>8/20/2012</b>	Ann E. Leary		
Division Set 25	Division 25-3-GAS	8/9/2012	<b>8/20/2012</b>	Paul M. Normand		

DATA SET	DATA REQUEST	DATE ISSUED	DATE FILED	WITNESS	ATTACHMENT	CONFIDENTIAL ATTACHMENT
<b>COMMISSION SET 1</b>						
Commission Set 1	Commission 1-1-ELEC/GAS	5/24/2012	6/6/2012	Michael D. Laflamme		
Commission Set 1	Commission 1-2-ELEC/GAS	5/24/2012	6/7/2012	Maureen P. Heaphy		
Commission Set 1	Commission 1-3-ELEC/GAS	5/24/2012	6/7/2012	Michael D. Laflamme	Att. COMM 1-3-1-ELEC/GAS Att. COMM 1-3-2-ELEC/GAS	
Commission Set 1	Commission 1-4-ELEC/GAS	5/24/2012	6/7/2012	Timothy D. Horan		
Commission Set 1	Commission 1-5-ELEC/GAS	5/24/2012	6/6/2012	Maureen P. Heaphy		
Commission Set 1	Commission 1-6-ELEC	5/24/2012	6/7/2012	Stephen F. Doucette and Maureen P. Heaphy		
Commission Set 1	Commission 1-7-ELEC	5/24/2012	6/7/2012	Stephen F. Doucette and Maureen P. Heaphy		
Commission Set 1	Commission 1-8-ELEC	5/24/2012	6/6/2012	Stephen F. Doucette		
Commission Set 1	Commission 1-9-ELEC	5/24/2012	6/7/2012	Stephen F. Doucette and Maureen P. Heaphy		
Commission Set 1	Commission 1-10-ELEC	5/24/2012	6/6/2012	Stephen F. Doucette		
Commission Set 1	Commission 1-11-ELEC	5/24/2012	6/6/2012	Stephen F. Doucette		
Commission Set 1	Commission 1-12-ELEC	5/24/2012	6/6/2012	Stephen F. Doucette		
Commission Set 1	Commission 1-13-ELEC/GAS	5/24/2012	6/4/2012	Evelyn M. Kaye		
Commission Set 1	Commission 1-14-ELEC/GAS	5/24/2012	6/4/2012	Evelyn M. Kaye		
Commission Set 1	Commission 1-15-ELEC/GAS	5/24/2012	6/6/2012	Evelyn M. Kaye		
Commission Set 1	Commission 1-16-ELEC/GAS	5/24/2012	6/4/2012	Evelyn M. Kaye and Michael D. Laflamme		
Commission Set 1	Commission 1-17-ELEC/GAS	5/24/2012	6/4/2012	Evelyn M. Kaye		
Commission Set 1	Commission 1-18-ELEC/GAS	5/24/2012	6/4/2012	Evelyn M. Kaye		
Commission Set 1	Commission 1-19-ELEC/GAS	5/24/2012	6/4/2012	Evelyn M. Kaye	Att. COMM 1-19-ELEC/GAS	
Commission Set 1	Commission 1-20-ELEC	5/24/2012	6/6/2012	Michael R. Hrycin	Att. COMM 1-20-1-ELEC Att. COMM 1-20-2-ELEC	
Commission Set 1	Commission 1-21-ELEC	5/24/2012	6/6/2012	Michael R. Hrycin	Att. COMM 1-21-ELEC	
Commission Set 1	Commission 1-22-ELEC	5/24/2012	6/6/2012	Michael R. Hrycin	Att. COMM 1-22-ELEC	
Commission Set 1	Commission 1-23-ELEC	5/24/2012	6/7/2012	Michael R. Hrycin		
Commission Set 1	Commission 1-24-ELEC	5/24/2012	6/7/2012	Michael R. Hrycin		
Commission Set 1	Commission 1-25-ELEC	5/24/2012	6/6/2012	Michael R. Hrycin		
Commission Set 1	Commission 1-26-ELEC	5/24/2012	6/6/2012	Michael R. Hrycin		
Commission Set 1	Commission 1-27-GAS	5/24/2012	6/6/2012	Jeffrey P. Martin		
Commission Set 1	Commission 1-28-GAS	5/24/2012	6/6/2012	Jeffrey P. Martin		
Commission Set 1	Commission 1-29-ELEC	5/24/2012	6/4/2012	Alfred P. Morrissey		
Commission Set 1	Commission 1-30-ELEC	5/24/2012	6/4/2012	Alfred P. Morrissey		

DATA SET	DATA REQUEST	DATE ISSUED	DATE FILED	WITNESS	ATTACHMENT	CONFIDENTIAL ATTACHMENT
Commission Set 1	Commission 1-31-ELEC	5/24/2012	6/4/2012	Alfred P. Morrissey		
Commission Set 1	Commission 1-32-ELEC	5/24/2012	6/4/2012	Alfred P. Morrissey		
Commission Set 1	Commission 1-33-ELEC	5/24/2012	6/7/2012	Alfred P. Morrissey		
Commission Set 1	Commission 1-34-ELEC	5/24/2012	6/7/2012	Alfred P. Morrissey		
Commission Set 1	Commission 1-35-ELEC/GAS	5/24/2012	6/6/2012	Michael D. Laflamme		
Commission Set 1	Commission 1-36-ELEC/GAS	5/24/2012	6/7/2012	Michael D. Laflamme	Att. COMM 1-36-ELEC/GAS	
Commission Set 1	Commission 1-37-GAS	5/24/2012	6/7/2012	Michael D. Laflamme		
Commission Set 1	Commission 1-38-ELEC	5/24/2012	6/6/2012	Michael D. Laflamme		
Commission Set 1	Commission 1-39-ELEC/GAS	5/24/2012	6/7/2012	Michael D. Laflamme		
Commission Set 1	Commission 1-40-ELEC/GAS	5/24/2012	6/7/2012	Ann E. Leary & Jeanne Lloyd	Att. COMM 1-40-ELEC/GAS	
Commission Set 1	Commission 1-41-ELEC/GAS	5/24/2012	6/6/2012	Robert B. Hevert		
Commission Set 1	Commission 1-42-ELEC/GAS	5/24/2012	6/6/2012	Michael D. Laflamme		
Commission Set 1	Commission 1-43-ELEC/GAS	5/24/2012	6/6/2012	Michael D. Laflamme		
Commission Set 1	Commission 1-44-ELEC/GAS	5/24/2012	6/7/2012	Maureen P. Heaphy	Att. COMM 1-44-ELEC/GAS	
Commission Set 1	Commission 1-45-ELEC/GAS	5/24/2012	6/6/2012	Stephen F. Doucette		
Commission Set 1	Commission 1-46-GAS	5/24/2012	6/7/2012	Ann E. Leary		
<b>COMMISSION SET 2</b>						
Commission Set 2	Commission 2-1-ELEC/GAS	7/10/2012	7/24/2012	Maureen P. Heaphy	Att. COMM 2-1-ELEC/GAS	
Commission Set 2	Commission 2-2-ELEC/GAS	7/10/2012	7/19/2012	Maureen P. Heaphy		
Commission Set 2	Commission 2-3-ELEC/GAS	7/10/2012	7/23/2012	Maureen P. Heaphy		
Commission Set 2	Commission 2-4-ELEC/GAS	7/10/2012	7/23/2012	Maureen P. Heaphy		
Commission Set 2	Commission 2-5-ELEC/GAS	7/10/2012	7/19/2012	Maureen P. Heaphy		
Commission Set 2	Commission 2-6-ELEC/GAS	7/10/2012	7/24/2012	Maureen P. Heaphy		
Commission Set 2	Commission 2-7-ELEC/GAS	7/10/2012	7/19/2012	Maureen P. Heaphy		
Commission Set 2	Commission 2-8-ELEC/GAS	7/10/2012	7/24/2012	Maureen P. Heaphy	Att. COMM 2-8-ELEC/GAS	
Commission Set 2	Commission 2-9-ELEC/GAS	7/10/2012	7/20/2012	Maureen P. Heaphy		
Commission Set 2	Commission 2-10-ELEC/GAS	7/10/2012	7/24/2012	Maureen P. Heaphy		
Commission Set 2	Commission 2-11-ELEC/GAS	7/10/2012	7/19/2012	Maureen P. Heaphy		
Commission Set 2	Commission 2-12-ELEC/GAS	7/10/2012	7/19/2012	Maureen P. Heaphy		
Commission Set 2	Commission 2-13-ELEC/GAS	7/10/2012	7/20/2012	Maureen P. Heaphy		
Commission Set 2	Commission 2-14-ELEC/GAS	7/10/2012	7/24/2012	Michael D. Laflamme		
Commission Set 2	Commission 2-15-ELEC/GAS	7/10/2012	7/31/2012	Maureen P. Heaphy		

DATA SET	DATA REQUEST	DATE ISSUED	DATE FILED	WITNESS	ATTACHMENT	CONFIDENTIAL ATTACHMENT
Commission Set 2	Commission 2-16-ELEC/GAS	7/10/2012	7/30/2012	Timothy D. Horan	Att. COMM 2-16-1-ELEC/GAS Att. COMM 2-16-2-ELEC/GAS	
Commission Set 2	Commission 2-17-ELEC/GAS	7/10/2012	7/18/2012	Robert B. Hevert		
Commission Set 2	Commission 2-18-ELEC/GAS	7/10/2012	7/18/2012	Michael D. Laflamme		
Commission Set 2	Commission 2-19-ELEC	7/10/2012	7/16/2012	Michael D. Laflamme		
Commission Set 2	Commission 2-20-GAS	7/10/2012	7/19/2012	Michael D. Laflamme		
Commission Set 2	Commission 2-21-ELEC/GAS	7/10/2012	7/16/2012	Michael D. Laflamme		
Commission Set 2	Commission 2-22-ELEC/GAS	7/10/2012	7/26/2012	Stephen F. Doucette		
Commission Set 2	Commission 2-23-ELEC/GAS	7/10/2012	8/1/2012	Michael D. Laflamme		
Commission Set 2	Commission 2-24-GAS	7/10/2012	7/23/2012	Ann E. Leary		
Commission Set 2	Commission 2-25-ELEC/GAS	7/10/2012	7/23/2012	Evelyn M. Kaye	Att. COMM 2-25-1-ELEC/GAS Att. COMM 2-25-2-ELEC/GAS	
Commission Set 2	Commission 2-26-ELEC/GAS	7/10/2012	7/23/2012	Evelyn M. Kaye		
Commission Set 2	Commission 2-27-GAS	7/10/2012	7/16/2012	Evelyn M. Kaye		
Commission Set 2	Commission 2-28-ELEC/GAS	7/10/2012	7/16/2012	Evelyn M. Kaye		
Commission Set 2	Commission 2-29-ELEC/GAS	7/10/2012	7/16/2012	Evelyn M. Kaye		
Commission Set 2	Commission 2-30-ELEC/GAS	7/10/2012	7/16/2012	Evelyn M. Kaye		
Commission Set 2	Commission 2-31-ELEC	7/10/2012	7/24/2012	Evelyn M. Kaye	Att. COMM 2-31-ELEC/GAS	
Commission Set 2	Commission 2-32-GAS	7/10/2012	7/23/2012	Evelyn M. Kaye		
Commission Set 2	Commission 2-33-ELEC	7/10/2012	7/20/2012	Michael R. Hrycin		
Commission Set 2	Commission 2-34-ELEC	7/10/2012	7/20/2012	Michael R. Hrycin		
Commission Set 2	Commission 2-35-ELEC	7/10/2012	7/27/2012	Michael R. Hrycin	Att. COMM 2-35-1-ELEC Att. COMM 2-35-2-ELEC	
Commission Set 2	Commission 2-36-GAS	7/10/2012	7/24/2012	Jeffrey P. Martin		
Commission Set 2	Commission 2-37-ELEC/GAS	7/10/2012	7/19/2012	Jeffrey P. Martin		
Commission Set 2	Commission 2-38-ELEC	7/10/2012	7/16/2012	Michael D. Laflamme		
Commission Set 2	Commission 2-39-GAS	7/10/2012	7/16/2012	A. Leo Silvestrini		
Commission Set 2	Commission 2-40-ELEC/GAS	7/10/2012	7/17/2012	Michael D. Laflamme		
Commission Set 2	Commission 2-41-ELEC	7/10/2012	7/17/2012	Michael D. Laflamme		
Commission Set 2	Commission 2-42-ELEC/GAS	7/10/2012	7/16/2012	Michael D. Laflamme		
Commission Set 2	Commission 2-43-ELEC/GAS	7/10/2012	7/24/2012	Maureen P. Heaphy & Michael D. Laflamme	Att. COMM 2-43-ELEC/GAS	
Commission Set 2	Commission 2-44-ELEC/GAS	7/10/2012	7/16/2012	Michael D. Laflamme		
Commission Set 2	Commission 2-45-ELEC	7/10/2012	7/20/2012	Michael D. Laflamme	Att. COMM 2-45-ELEC	
Commission Set 2	Commission 2-46-ELEC	7/10/2012	7/16/2012	Michael D. Laflamme		

DATA SET	DATA REQUEST	DATE ISSUED	DATE FILED	WITNESS	ATTACHMENT	CONFIDENTIAL ATTACHMENT
Commission Set 2	Commission 2-47-ELEC	7/10/2012	7/20/2012	Michael D. Laflamme		
Commission Set 2	Commission 2-48-ELEC	7/10/2012	7/30/2012	Michael D. Laflamme		
Commission Set 2	Commission 2-49-ELEC/GAS	7/10/2012	7/18/2012	Michael D. Laflamme	Att. DIV 2-49-ELEC/GAS	
<b>COMMISSION SET 3</b>						
Commission Set 3	Commission 3-1-ELEC	8/7/2012	8/15/2012	Michael D. Laflamme	Att. COMM 3-1-ELEC	
Commission Set 3	Commission 3-2-ELEC/GAS	8/7/2012	8/10/2012	Michael D. Laflamme	Att. COMM 3-2-ELEC/GAS	
Commission Set 3	Commission 3-3-ELEC/GAS	8/7/2012	8/10/2012	Michael D. Laflamme		
Commission Set 3	Commission 3-4-ELEC/GAS	8/7/2012	8/10/2012	Michael D. Laflamme		
Commission Set 3	Commission 3-5-ELEC/GAS	8/7/2012	8/10/2012	Michael D. Laflamme	Att. COMM 3-5-ELEC/GAS	
Commission Set 3	Commission 3-6-ELEC/GAS	8/7/2012	8/10/2012	Michael D. Laflamme		
Commission Set 3	Commission 3-7-GAS	8/7/2012	8/10/2012	Michael D. Laflamme & Susan L. Fleck		
Commission Set 3	Commission 3-8-GAS	8/7/2012	8/10/2012	Michael D. Laflamme		
Commission Set 3	Commission 3-9-GAS	8/7/2012	8/16/2012	Michael D. Laflamme	Att. COMM 3-9-GAS	
Commission Set 3	Commission 3-10-GAS	8/7/2012	8/8/2012	Michael D. Laflamme		
Commission Set 3	Commission 3-11-GAS	8/7/2012	8/10/2012	Ann E. Leary & A. Leo Silvestrini		
Commission Set 3	Commission 3-12-ELEC	8/7/2012	8/15/2012	Jeanne A. Lloyd		
Commission Set 3	Commission 3-13-GAS	8/7/2012	8/10/2012	Paul M. Normand		
Commission Set 3	Commission 3-14-GAS	8/7/2012	8/9/2012	Paul M. Normand		
Commission Set 3	Commission 3-15-GAS	8/7/2012	8/10/2012	Paul M. Normand	Att. COMM 3-15-GAS	
Commission Set 3	Commission 3-16-GAS	8/7/2012	8/10/2012	Paul M. Normand		
Commission Set 3	Commission 3-17-ELEC	8/7/2012	8/16/2012	Evelyn M. Kaye		
Commission Set 3	Commission 3-18-ELEC/GAS	8/7/2012	8/8/2012	Michael D. Laflamme		
Commission Set 3	Commission 3-19-ELEC/GAS	8/7/2012	8/8/2012	Timothy F. Horan		
Commission Set 3	Commission 3-20-ELEC/GAS	8/7/2012	8/24/2012	Timothy F. Horan	Att. COMM 3-20-1-ELEC/GAS Att. COMM 3-20-2-ELEC/GAS	
Commission Set 3	Commission 3-21-ELEC/GAS	8/7/2012	8/15/2012	Timothy F. Horan		
Commission Set 3	Commission 3-22-ELEC/GAS	8/7/2012	8/24/2012	Maureen P. Heaphy		
Commission Set 3	Commission 3-23-ELEC/GAS	8/7/2012	8/10/2012	Evelyn M. Kaye		
Commission Set 3	Commission 3-24-ELEC/GAS	8/7/2012	8/15/2012	Evelyn M. Kaye		
Commission Set 3	Commission 3-25-ELEC/GAS	8/7/2012	8/9/2012	Evelyn M. Kaye		
Commission Set 3	Commission 3-26-GAS	8/7/2012	8/10/2012	Evelyn M. Kaye		

DATA SET	DATA REQUEST	DATE ISSUED	DATE FILED	WITNESS	ATTACHMENT	CONFIDENTIAL ATTACHMENT
Commission Set 3	Commission 3-27-GAS	8/7/2012	8/15/2012	Evelyn M. Kaye		
Commission Set 3	Commission 3-28-ELEC/GAS	8/7/2012	8/20/2012	Robert B. Hevert		
Commission Set 3	Commission 3-29-ELEC/GAS	8/7/2012	8/20/2012	Robert B. Hevert		
Commission Set 3	Commission 3-30-ELEC/GAS	8/7/2012	8/21/2012	Robert B. Hevert		
Commission Set 3	Commission 3-31-ELEC/GAS	8/7/2012	8/20/2012	Robert B. Hevert		
Commission Set 3	Commission 3-32-ELEC/GAS	8/7/2012	8/20/2012	Robert B. Hevert		
Commission Set 3	Commission 3-33-ELEC/GAS	8/7/2012	8/20/2012	Robert B. Hevert		
Commission Set 3	Commission 3-34-ELEC (Redacted)	8/7/2012	8/20/2012	Evelyn M. Kaye		
Commission Set 3	Commission 3-34-ELEC (Confidential)	8/7/2012	8/20/2012	Evelyn M. Kaye		
Commission Set 3	Commission 3-35-ELEC	8/7/2012	8/16/2012	Evelyn M. Kaye		
<b>COMMISSION SET 4</b>						
Commission Set 4	Commission 4-1-ELEC/GAS	8/10/2012	8/20/2012	Robert B. Hevert		
Commission Set 4	Commission 4-2-ELEC/GAS	8/10/2012	8/20/2012	Robert B. Hevert		
Commission Set 4	Commission 4-3-ELEC/GAS	8/10/2012	8/20/2012	Robert B. Hevert		
Commission Set 4	Commission 4-4-ELEC/GAS	8/10/2012	8/20/2012	Robert B. Hevert		
Commission Set 4	Commission 4-5-ELEC/GAS	8/10/2012	8/20/2012	Robert B. Hevert		
Commission Set 4	Commission 4-6-ELEC/GAS	8/10/2012	8/20/2012	Robert B. Hevert		
Commission Set 4	Commission 4-7-ELEC/GAS	8/10/2012	8/20/2012	Robert B. Hevert		
Commission Set 4	Commission 4-8-ELEC/GAS	8/10/2012	8/20/2012	Robert B. Hevert		
Commission Set 4	Commission 4-9-ELEC/GAS	8/10/2012	8/20/2012	Robert B. Hevert		
Commission Set 4	Commission 4-10-ELEC/GAS	8/10/2012	8/20/2012	Robert B. Hevert		
Commission Set 4	Commission 4-11-ELEC/GAS	8/10/2012	8/20/2012	Robert B. Hevert		
<b>COMMISSION SET 5</b>						
Commission Set 5	Commission 5-1-ELEC/GAS	8/24/2012	9/6/2012	Robert B. Hevert		
Commission Set 5	Commission 5-2-ELEC/GAS	8/24/2012	9/6/2012	Robert B. Hevert		
Commission Set 5	Commission 5-3-ELEC/GAS	8/24/2012	9/6/2012	Robert B. Hevert		
Commission Set 5	Commission 5-4-ELEC/GAS	8/24/2012				
Commission Set 5	Commission 5-5-ELEC/GAS	8/24/2012				
Commission Set 5	Commission 5-6-ELEC/GAS	8/24/2012	9/6/2012	Timothy F. Horan		
Commission Set 5	Commission 5-7-ELEC/GAS	8/24/2012	9/7/2012	Michael D. Laflamme	Attachment COMM 5-7-ELEC/GAS	
Commission Set 5	Commission 5-8-ELEC/GAS	8/24/2012	9/6/2012	Evelyn M. Kaye		



DATA SET	DATA REQUEST	DATE ISSUED	DATE FILED	WITNESS	ATTACHMENT	CONFIDENTIAL ATTACHMENT
Commission Set 5	Commission 5-9-ELEC/GAS	8/24/2012	9/6/2012	Maureen P. Heaphy		
Commission Set 5	Commission 5-10-ELEC/GAS	8/24/2012	9/7/2012	Maureen P. Heaphy		
Commission Set 5	Commission 5-11-ELEC/GAS	8/24/2012				
Commission Set 5	Commission 5-12-ELEC/GAS	8/24/2012	9/7/2012	Maureen P. Heaphy		
Commission Set 5	Commission 5-13-ELEC/GAS	8/24/2012	9/6/2012	Maureen P. Heaphy		
Commission Set 5	Commission 5-14-ELEC/GAS	8/24/2012	9/6/2012	Maureen P. Heaphy		
Commission Set 5	Commission 5-15-ELEC/GAS	8/24/2012	9/6/2012	Maureen P. Heaphy		
Commission Set 5	Commission 5-16-ELEC/GAS	8/24/2012	9/6/2012	Maureen P. Heaphy		
Commission Set 5	Commission 5-17-ELEC/GAS	8/24/2012	9/6/2012	Maureen P. Heaphy		
Commission Set 5	Commission 5-18-ELEC	8/24/2012	9/7/2012	Michael D. Laflamme & Michael R. Hrycin		
Commission Set 5	Commission 5-19-ELEC	8/24/2012	9/6/2012	Michael D. Laflamme		
Commission Set 5	Commission 5-20-ELEC	8/24/2012	9/6/2012	Michael D. Laflamme		
Commission Set 5	Commission 5-21-ELEC/GAS	8/24/2012	9/6/2012	Michael D. Laflamme & Timothy F. Horan		
Commission Set 5	Commission 5-22-ELEC/GAS	8/24/2012	9/7/2012	Michael D. Laflamme		

DATA SET	DATA REQUEST	DATE ISSUED	DATE FILED	WITNESS	ATTACHMENT	CONFIDENTIAL ATTACHMENT
<b>NAVY SET 1</b>						
Navy Set 1	Navy 1-1-ELEC	7/27/2012	<b>8/14/2012</b>	Legal Department	See Attached Page	
Navy Set 1	Navy 1-2-ELEC	7/27/2012	<b>8/14/2012</b>	Legal Department	See Attached Page	
Navy Set 1	Navy 1-3-ELEC	7/27/2012	<b>8/13/2012</b>	Legal Department	Att. Navy 1-3-ELEC	
Navy Set 1	Navy 1-4-ELEC	7/27/2012	<b>8/14/2012</b>	Legal Department	Att. Navy 1-4-ELEC	
Navy Set 1	Navy 1-5-ELEC	7/27/2012	<b>8/8/2012</b>	Jeanne A. Lloyd	Att. Navy 1-5-1-ELEC Att. Navy 1-5-2-ELEC	
Navy Set 1	Navy 1-6-ELEC	7/27/2012	<b>8/8/2012</b>	Jeanne A. Lloyd & Michael D. Laflamme		
Navy Set 1	Navy 1-7-ELEC	7/27/2012	<b>8/13/2012</b>	Michael D. Laflamme		
Navy Set 1	Navy 1-8-ELEC	7/27/2012	<b>8/7/2012</b>	Jeanne A. Lloyd	Att. Navy 1-8-1-ELEC Att. Navy 1-8-2-ELEC Att. Navy 1-8-3-ELEC	
Navy Set 1	Navy 1-9-ELEC	7/27/2012	<b>8/7/2012</b>	Jeanne A. Lloyd		
Navy Set 1	Navy 1-10-ELEC	7/27/2012	<b>8/7/2012</b>	Howard S. Gorman		
Navy Set 1	Navy 1-11-ELEC	7/27/2012	<b>8/2/2012</b>	Howard S. Gorman		
Navy Set 1	Navy 1-12-ELEC	7/27/2012	<b>8/2/2012</b>	Howard S. Gorman		
Navy Set 1	Navy 1-13-ELEC	7/27/2012	<b>8/2/2012</b>	Howard S. Gorman		
Navy Set 1	Navy 1-14-ELEC	7/27/2012	<b>8/13/2012</b>	Michael D. Laflamme		

## Navy Set 1

## Navy 1-1-ELEC

## Attachments

Schedule MDL-2	Reallocation of Test Year Service Company Costs
Schedule MDL-3-ELEC	Narragansett Electric Cost of Service
Schedule MDL-4-ELEC	Narragansett Electric Cash Working Capital Study
Schedule MDL-5	Illustrative Pension/OPEB Tracker
Schedule MDL-6	Illustrative Property Tax Tracker
Schedule EMK-1	Charge Off Data
Schedule EMK-3	Residential Standard Offer Service Rates v. Rolling 12 Month
Schedule EMK-4	Unemployment Data

## Navy 1-2-ELEC

## Attachments

Workpaper MDL-1	Integrated Facilities Agreement (IFA)
Workpaper MDL-3	Salary and Wages
Workpaper MDL-4-ELEC	Average New Hires by Company - Electric
Workpaper MDL-5	Healthcare
Workpaper MDL-6	Donations
Workpaper MDL-7	Computer Software - Service company Rent Expense
Workpaper MDL-8-ELEC	Regulatory Assessments - Electric
Workpaper MDL-9	Facilities
Workpaper MDL-10	Facilities Consolidation Savings
Workpaper MDL-11	Postage
Workpaper MDL-12	OPEX Associated with CAPEX Three Year Historical Percentages
Workpaper MDL-13-ELEC	Advertising - Electric
Workpaper MDL-14	Average Salaries - Consumer Advocates & Additional US Foundations Program Staff
Workpaper MDL-15	Productivity and Efficiency Savings
Workpaper MDL-16	Paperless Billing Adjustment
Workpaper MDL-18	Investment Tax Credit
Workpaper MDL-19-ELEC	Depreciation Expense - Electric
Workpaper MDL-20	Amortization of Loss on Reacquired Debt
Workpaper MDL-21-ELEC	Other Rate Base Items - Electric
Workpaper MDL-22-ELEC	Accumulated Deferred Income Tax - Electric
Workpaper MDL-23	Storm Fund Deficiency Recovery
Workpaper MDL-24	Property Tax
Workpaper MDL-26	Pension and OPEB Workpapers (located in Book 6 of 11)

Commission 5-7-ELEC/GAS

Request:

Michael Laflamme. Please provide a copy of the guidelines for charitable gifts that the Company prepared and submitted to the Commission on or before December 15, 1987 in compliance with Order No. 12467 (Docket No. 1862).

Response:

Please see Attachment COMM 5-7-ELEC/GAS.



New England Power Service Company  
25 Research Drive  
Westborough, Massachusetts 01582-0099  
Tel. (617) 366-9011

Lawrence J. Reilly  
Attorney

December 15, 1987

Edward F. Burke, Chairman  
Public Utilities Commission  
100 Orange Street  
Providence, Rhode Island 02903

Re: Charitable Contributions by  
Regulated Utilities  
Docket No. 1862

RECEIVED  
1987 DEC 15 PM 4:28  
PUBLIC UTILITIES COMMISSION

Dear Chairman Burke:

On November 5, 1987, the Public Utilities Commission (Commission) issued Order No. 12467 regarding charitable contributions by regulated utilities. Among other things, the Commission's order directed each utility and party in Docket No. 1862 "to submit to the Commission on or before December 15, 1987, guidelines for charitable gifts designed to enable the Commission to develop 'Guidelines for Charitable Giving by Rhode Island Utility Companies' to which all future charitable giving which is considered a cost of service will conform." This letter, which is submitted on behalf of The Narragansett Electric Company (Narragansett or Company), is in response to that requirement.

As noted in the Commission's order, the Rhode Island Supreme Court has considered and ruled upon the question of charitable contributions by regulated utilities. In United Transit Co. v. Nunes, 209 A.2d 215, 222 (1965) the Supreme Court held that "... a gift by a public utility to a charitable organization in modest amount may be charged as an operating expense provided it is first established that it is productive of good community relations which will benefit the utility or its patrons." (See also, Providence Gas Co. v. Burman, A.2d 687, 698-699.) This ruling leaves two questions open to interpretation. Are the contributions a utility seeks to include in its cost of service productive of good

Edward F. Burke, Chairman

-2-

December 15, 1987

community relations? And, are the contributions modest in amount? Narragansett applauds the Commission's goal of establishing guidelines that will help to resolve these questions.

For the Commission's consideration, a copy of the current internal guidelines applicable to contributions made by Narragansett, and the other New England Electric System companies, is attached. So that the Company can revise its charitable giving over time in response to the changing needs of its service territory and customers, these guidelines are not overly specific. Rather, they establish general principles to be applied by the Company in evaluating requests for contributions. In general, contributions are limited to organizations operating in Narragansett's service territory. Contributions are only to be made outside our service territory if the organization provides services to the people living and working within our service territory.

The major categories of charitable contributions made by Narragansett are Health and Human Services, Civic, Cultural, Education, and Citizenship. The factors Narragansett considers when evaluating requests for contributions in each of these categories are outlined on pages 4 through 6 of the guidelines. To help ensure that contributions are productive of good community relations, contributions are only made to recognized organizations or less-known organizations that can document their authenticity, stability, and integrity. The ratio of an organization's administrative costs to total funds raised is also considered.

Narragansett's guidelines also contain certain procedural elements that are intended to ensure that all requests for charitable contributions are evaluated in an unbiased manner. These procedures include requirements that all requests for contributions be in writing and that all decisions to deny requests for contributions be explained in writing and maintained in Company files. These procedural elements of Narragansett's guidelines are described in more detail on pages 6 through 8 of the guidelines.

With respect to the amount of contributions, absent extraordinary circumstances, contributions are limited to \$1,500 per organization per year. The precise amount of any contribution is determined by Narragansett on the basis of

Edward F. Burke, Chairman

-3-

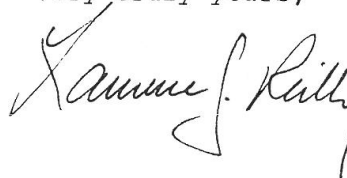
December 15, 1987

available funds and judgment as to which organizations will provide the most benefits. Larger contributions may be authorized for capital fund drives; however, even these contributions are limited to a percentage of the private money goal. As described on page 3 of the guidelines, these limits are 1% for hospitals and .5% for colleges, social, and cultural institutions. Narragansett believes that consistent application of its guidelines will ensure that its charitable contributions are both modest in amount and productive of good community relations.

In summary, Narragansett commends the Commission's initiative to establish guidelines for determining the extent to which charitable contributions will be considered a cost of service in a utility rate case. We urge the Commission to develop guidelines similar to those adopted by Narragansett that provide Company management with the flexibility to respond to the needs of the communities we serve as they change over time.

Narragansett appreciates the opportunity to offer these comments.

Very truly yours,



Enclosure

NEW ENGLAND ELECTRIC SYSTEM

CONTRIBUTION PROGRAM



NEW ENGLAND ELECTRIC SYSTEM  
CONTRIBUTION PROGRAM

TABLE OF CONTENTS

	Page
NEES'S CONTRIBUTION POLICY	1
ADMINISTRATION	1-2
CONTRIBUTION GUIDELINES	2-5
PROGRAM OPERATION	
... SCREENING CONTRIBUTIONS	6
... PROCESSING CONTRIBUTIONS	6-7
REPORTING	8
EXHIBITS	
... CONTRIBUTION REQUEST	A
... REQUEST FOR CONTRIBUTION PAYMENT	B
... LIFE OF TYPICAL CONTRIBUTION REQUEST	C

- 1 -

#### NEES'S CONTRIBUTION POLICY

NEES recognizes social and economic obligations to the communities it serves and to the region in which it is located. It responds to these obligations by contributing to causes which it feels will benefit the communities and region it serves.

The major categories included in NEES's charitable program are:

- ... Health and Human Services
- ... Civic
- ... Cultural
- ... Education
- ... Citizenship

The contribution program is administered by the NEES Contribution Committee ("Committee") under guidelines established by the Committee.

#### ADMINISTRATION

The Committee consists of the Chairman of the NEES Board of Directors (Committee Chairman), Presidents of the Retail Operating Companies, the President of the New England Power Company, and the Corporate Contribution Administrator ("Administrator").

The Committee is responsible for:

- . establishing policies and guidelines;
- . developing criteria for evaluating grant proposals;
- . determining a total level of annual giving and allocating this amount among NEES Trust, the New England Power Company, and the Retail Operating Companies;

- 2 -

ADMINISTRATION (cont'd)

. appointing the Administrator who will ensure conformance to the Committee's Policies, Guidelines, and Procedures.

Sub-committees, established by each Retail Operating Company President and the President of New England Power Company, are responsible for contributions up to authorized allocations. The Sub-committees are also responsible for screening all requests received at the local level, and those received by the Committee and referred to the Sub-Committee for processing. Recommendations with respect to requests should be prepared at the level in the Company where contact with the charitable organization and its benefits to the community can best be evaluated. The Sub-Committees will adhere to policies, guidelines and procedures established by the Committee. Requests involving more than one NEES subsidiary are referred to the NEES Contribution Committee for consideration.

CONTRIBUTION GUIDELINES

Geographical Limits

NEES's contributions are generally limited to organizations operating in its service area. However, contributions can, in some circumstances, be made to organizations outside the service area which provide services to the people living and working in our service area.

Organization Selection Criteria

NEES supports the concept of consolidated fund raising through United Funds and will contribute appropriate amounts to such funds. Contributions will not be made to agencies that qualify for an available United Fund but choose not to participate.

- 3 -

CONTRIBUTION GUIDELINES (cont'd)

On site solicitation will be restricted to United Funds. The restriction of on-site solicitation of employees to United Funds is intended to make the most productive use of time, facilities and administrative efforts committed to charitable endeavors.

Loaned Personnel

NEES will not provide personnel on a non-reimbursable basis to charitable organizations. This shall not be construed to prohibit employees from volunteer participation in charitable organization activities on their own time, nor to preclude annual United Fund drives on Company premises.

Capital Fund Drive Limits

Participation in capital fund drives is in general limited to facilities to be constructed in our service territory. Contributions will be considered to those organizations outside our service territory whose nature is such that people living and working within our service area derive benefits from their services. Organizations such as specialty medical facilities, museums and education institutions are examples of the type that may be located outside and provide benefits within our service area.

Depending upon the amount involved, a pledge may be made with payments spread over two to five years. Payments on approved pledges should not begin until the capital project is assured by a contract award. Depending on location, the pledge may be allocated among Retail Companies and NEPCo. The level of contribution will be according to the following:

Contributions up to 1% of the private money goal will be considered for hospitals. Contributions up to 0.5% of the private money goal will be considered for four-year colleges, social institutions such as the YMCA and the Salvation Army and cultural institutions such as museums.

- 4 -

CONTRIBUTION GUIDELINES (cont'd)

Operating Fund Drive Limits

Contributions to provide operating funds to charitable organizations will in general be limited to United Funds and organizations that have been singled out as deserving of particular corporate focus, such as specific educational programs.

Contributions to United Funds will be aimed at matching the employee giving to specific funds to the extent that budgetary considerations and corporate pledging will allow. Contributions to organizations singled out for particular corporate focus will be subject to budget constraints, need, and merits of the program.

All other operating fund requests will be limited to \$1500.

Charitable Categories

The following guidelines should be used in determining whether a request is in conformance with the categories of charitable grants to be supported under NEES's Contribution Policy.

Health and Human Services grants should help:

- . satisfy or supplement basic human needs;
- . provide medical services for the disadvantaged;
- . promote health education;
- . assist the disabled and disadvantaged to live as independently as possible;
- . promote the physical and emotional well-being of youth and families;
- . support hospital building campaigns and specific medical projects;
- . support United Way and other major charitable organizations.

- 5 -

CONTRIBUTION GUIDELINES (cont'd)

Civic grants should help:

- . lead to enhancements of the physical environment of the community;
- . improve the quality of life for disadvantaged people;
- . revitalize economically distressed area;
- . provide job training for youth, the disadvantaged, and the disabled;
- . support the formation of new industrial and commercial bases;
- . link public and private sector expertise to help solve common problems.

Cultural grants should help:

- . broaden the cultural experience of the public and improve the quality of life;
- . demonstrate concern for excellence and innovation in the arts;
- . support museums, symphonies, theatrical, repertory and dance companies, and other visual and performing arts programs and institutions that have established community acceptance and support.

Education grants should help:

- . support the advancement of education in general and specifically those fields of particular interest to the power supply and energy industry;
- . decrease the number of functional illiterates;
- . decrease the number of high school drop-outs;
- . provide educational opportunities for members of minority groups, women, and disadvantaged persons;
- . encourage broadened financial support to educational institutions of higher learning by employees, directors, and retirees through supplementing gifts in accordance with provisions of the Company's Matching Gifts Program.

- 6 -

Citizenship Grants Program:

- . This program encourages and recognizes significant employee volunteer work through grants in the employee's name to organizations that provide educational, cultural and civic services to the general community.

PROGRAM OPERATION

Screening Contributions

All requests for contributions must be in writing. It is essential that the person processing, and those ultimately approving contributions are satisfied that the organization is reputable, that the contribution is for a worthy cause, and that it falls within NEES Policy and Guidelines.

Organizations such as United Funds, Boy Scouts of America, Tufts University, etc. are well known and require minimum documentation. However, new or less well-known organizations should be asked for evidence of their authenticity, stability, and integrity. Such evidence may take the form of a copy of the I.R.S. letter ruling them to be a tax exempt organization, operating exclusively as a charitable organization, as defined under Section 501(c)3 of the Internal Revenue Code. Another source of information is their latest financial report. Of particular interest is the organization's source of funds, how it is spent, and the ratio of the organization's administrative costs to funds raised. Administrative expenses should total no more than 25% of the organization's income.

Processing Contributions

A Contribution Request form (Exhibit A) should be prepared for each request.

PROGRAM OPERATION (cont'd)

The letter from the requesting organization, the completed Contribution Request form, and any other pertinent documentation serve as the basis for a decision. A turndown letter will be sent if the request is denied. A copy of the letter along with all documentation will be filed.

The following schedule reflects required Contribution Request form approvals based on amount:

APPROVALS REQUIRED					
Amount	District Manager or Station Supt.	Subsidiary Vice Pres.	Subsidiary President/ System Officer	Committee Chairman	Corporate Contribution Administrator
Up to \$250	X				X
Up to \$1,000		X			X
Up to \$1,500			X		X
Over \$1,500				X	X

The individual processing the request will obtain approvals and prepare a Request for Contribution Payment form (Exhibit B). All documents should be reproduced and held in a pending file.

The original documents, i.e. the letter requesting the contribution, the Contribution Request form, the Request for Contribution Payment form, and any other pertinent documentation should be forwarded to the Administrator.

The Administrator will either approve or turn down the contribution request. Those requests that are turned down will be returned to the requesting organization with a written explanation by the individual or the Administrator and a copy of the letter will be filed with the documentation.



- 8 -

PROGRAM OPERATION (cont'd)

Documentation for approved requests will be reproduced and the originals sent to the Manager of General Accounting. The copies will be filed in a pending file awaiting the check. General Accounting will not process the contribution request without the following:

- ... Letter requesting the contribution
- ... Approved Contribution Request form
- ... Properly prepared Request for Contribution Payment form

These documents will be attached to the Audited Voucher and support the payment.

The check will be forwarded to the Administrator who will note the check number and date on his copies of the documentation. The documentation will be moved from the pending file to the completed file. Record retention will be in accordance with applicable Federal and State requirements. The check will be forwarded to the requesting Executive for mailing or delivery, along with a transmittal letter, to the requesting organization.

REPORTING

The Administrator is responsible for monitoring and reporting expenditures. The Administrator will furnish the Committee status reports upon request and a detailed report annually.

The annual report will be by Company, summarized for NEES, and segregated in the following, or other appropriate, categories:

		<u>%</u>
<u>Health and Human Services</u>		
Hospital and Health Grants	\$	
United Ways		
Human Service Agencies		
Youth Programs		
Senior Citizens		
Total	\$ _____	_____ %
<u>Civic</u>		
Civic Organizations	\$	
Public Policy Organizations		
Minority Programs		
Women's Programs		
Miscellaneous Grants		
Total	\$ _____	_____ %
<u>Cultural</u>		
Cultural Programs	\$	
Matching Gifts, Cultural		
Total	\$ _____	_____ %
<u>Education</u>		
Colleges and Universities	\$	
Education Related		
Education, Matching Gifts		
Total	\$ _____	_____ %
<u>Citizenship</u>		
Citizenship Grants	\$	
Total	\$ _____	_____ %
<u>Total</u>	\$ _____	<u>100.0%</u>

**EXHIBIT A**

**CONTRIBUTION REQUEST**

Date: \_\_\_\_\_  
Request No. \_\_\_\_\_

\_\_\_\_\_  
(NEES COMPANY)

1. Name of Organization: \_\_\_\_\_

Address: \_\_\_\_\_ Tel. No. \_\_\_\_\_

2. Original Contact: \_\_\_\_\_

3. Date of Request Letter: \_\_\_\_\_ (attach letter)

4. Amount Requested: \$ \_\_\_\_\_

5. Purpose of Contribution: \_\_\_\_\_

\_\_\_\_\_  
\_\_\_\_\_

( USE ATTACHMENTS, IF REQUIRED )

6. Purpose Falls within Following NEES Guidelines: " \_\_\_\_\_

\_\_\_\_\_  
\_\_\_\_\_

7. Does Organization Have an IRS Tax Exemption Letter? \_\_\_\_\_ Do We Have a Copy? \_\_\_\_\_

Do We Have a Copy of Their Latest Financial Report? \_\_\_\_\_

8. Will This Contribution Be Used in Our Service Area? \_\_\_\_\_ Where? \_\_\_\_\_

9. Why Should \_\_\_\_\_ (NEES COMPANY) Contribute to This

Cause? \_\_\_\_\_

\_\_\_\_\_  
\_\_\_\_\_

10. Amount Recommended for Approval: \$ \_\_\_\_\_

11. Compiler of This Form: \_\_\_\_\_ Date: \_\_\_\_\_

12. Amount Approved: \$ \_\_\_\_\_ or Send Turndown Letter: \_\_\_\_\_

AUTHORIZED BY

Accounting:  
Account Charged: 426.10

Approved By:  
\_\_\_\_\_  
Date: \_\_\_\_\_  
\_\_\_\_\_  
Date: \_\_\_\_\_  
\_\_\_\_\_  
Date: \_\_\_\_\_

Noted By:  
\_\_\_\_\_  
Date: \_\_\_\_\_  
INITIAL

EXHIBIT B

REQUEST FOR CONTRIBUTION PAYMENT

COMPANY LOCATION  
TO: MANAGER OF GENERAL ACCOUNTING - WESTBOROUGH DATE: \_\_\_\_\_

FROM: \_\_\_\_\_

KINDLY ISSUE A CHECK IN THE AMOUNT OF \$ \_\_\_\_\_

PAYABLE TO \_\_\_\_\_ (NAME)  
\_\_\_\_\_  
(STREET)  
\_\_\_\_\_  
(CITY, STATE, ZIP CODE)

IN PAYMENT OF CONTRIBUTION - SEE ATTACHED DOCUMENTATION \_\_\_\_\_  
\_\_\_\_\_  
\_\_\_\_\_

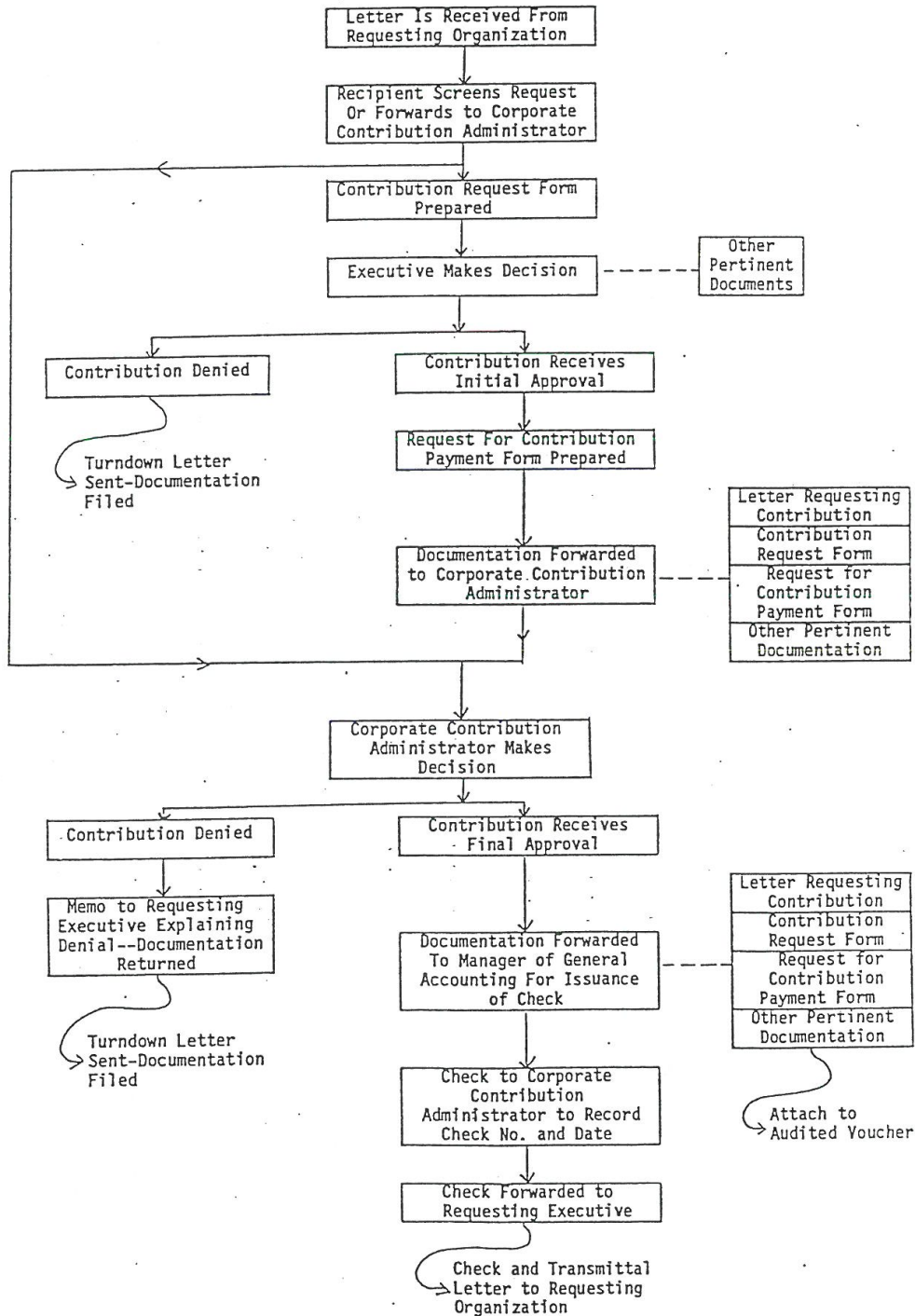
\_\_\_\_\_  
SIGNED \_\_\_\_\_  
CORPORATE CONTRIBUTION ADMINISTRATOR

PURCHASE ORDER AND REL. NO.		MATERIAL OR SERVICES RECEIVED		ENTERED ON MAT. REC. REPORT		INVOICE RECEIVED		
REQUISITIONED BY		DISTRIBUTION BY		DISTRIBUTION CHECKED		DISCOUNT EXPIRES/DUE DATE		
TERMS F.O.B.		PRICE OK		APPROVED FOR PAYMENT SEE ATTACHED CONTRIBUTION REQUEST				
VENDOR NUMBER		GR. CD.	CONTRA ACCT	BILL NUMBER		INVOICE NO. OR REFERENCE		
1		7112	13114	15115	20121		23	
REMARKS	DISCOUNT AMOUNT	H A N D T A X	P.O. OR REL. SEC	ORIG WORK UNIT	CHGD WORK UNIT	WORK ORDER AREA C D NO.	PLANT UNIT CODE OR ACCOUNT	NET AMOUNT
	29	35	4014142	46147 48149	52 53	56157 5259160	63164	70171
						0	426 10	
SALES TAX-BILLED	USE TAX TO BE PAID	EXEMPT	INVOICE DISTRIBUTION					

RETURN CHECK TO: \_\_\_\_\_ DATE: \_\_\_\_\_  
NAME: \_\_\_\_\_ LOCATION: \_\_\_\_\_  
PAYABLE TO: \_\_\_\_\_  
COMPANY: \_\_\_\_\_ AMOUNT: \_\_\_\_\_

EXHIBIT C

LIFE OF TYPICAL CONTRIBUTION REQUEST



Commission 5-10-ELEC/GAS

Request:

Maureen Heaphy or Michael Laflamme. If variable pay tied to financial goals was excluded from cost of service, as indicated in MPH, p. 21, lines 20-22, please explain specifically how the Company separated this expense out of the cost of service, i.e. what specific amount of variable pay attributable to financial goals was excluded from cost of service and how was that amount determined?

Response:

The Company is not seeking recovery for any variable pay relating to the achievement of financial goals in its cost of service for Narragansett Electric or Narragansett Gas provided in Schedule MDL-3-ELEC and Schedule MDL-3-GAS, respectively. The Company calculated the level of variable pay by salary bands at a "target level" that represents a level of performance that is judged to be approximately 45 percent of stated maximums as indicated in the Direct Testimony of Company Witness Maureen P. Heaphy, Page 21, Lines 8-9. The total amount of variable pay is calculated by salary bands to allow the Company to identify the amount of variable pay that is attributed to financial goals. The Company is excluding 100 percent of Band A financial and non-financial goals and 40 percent of Bands B and C that are attributed to financial goals from the cost of service. This calculation is shown on Workpaper MDL-3, Pages 6 - 7. The amount of variable pay for salary Bands B and C is calculated and reflected in column (n) on Workpaper MDL-3, Pages 6 - 7; however, this amount is clearly not included in column (q) of that workpaper, which is the basis for the Company's rate-year level of variable pay included in the cost of service shown on Page 21 of Schedule MDL-3-ELEC and Schedule MDL-3-GAS.

Commission 5-12-ELEC/GAS

Request:

Maureen Heaphy (p. 29, line 21) states that in 2010 all active and retiree benefit plan administration was consolidated with a single vendor. Please identify the vendor and what criteria the Company used to select the vendor.

Response:

As part of the ongoing consolidation of National Grid with KeySpan, during the integration process the Company decided to outsource the administration of all active and retiree health benefits to a third party administrator. Mercer, a leader in the benefits administration industry, was the incumbent vendor who was already administering the benefit plans for the legacy National Grid population; the administration for the legacy KeySpan population was performed in house. Because Mercer was providing National Grid with favorable pricing and performance, the benefits administration for the legacy KeySpan population was transitioned onto the Mercer platform. Consistent with past practice, National Grid continually reviews vendor performance to assess the adequacy of the delivery and administration of the benefits.

Commission 5-18-ELEC

Request:

The response to COMM 2-41-ELEC indicates that the Company spent \$214,000 in CY 2011 on stray/contact voltage monitoring. Given that the Company expects to recover these costs going forward via a fully reconciling funding mechanism that will be part of the annual ISR program, has the Company included in this docket a normalizing adjustment to remove these costs from the test year? If yes, please identify where the adjustment can be found. If no, why not?

Response:

The \$214,000 of stray/contact voltage monitoring costs in CY 2011 are costs associated with the monitoring of overhead facilities, and are not the same type of stray/contact voltage monitoring costs that will be incurred pursuant to R.I.G.L. Section 39-2-25, which will be monitoring costs associated with underground facilities. If it is determined that all stray/contact voltage monitoring costs, including the monitoring of both overhead and underground facilities, will be reconciled through the ISR mechanism or some other mechanism outside of base rates, then the Company will exclude the \$214,000 that is being recovered in base rates as a reconciling item when it makes its annual filings for recovery of these costs.



Commission 5-22-ELEC/GAS

Request:

In reference to COMM 3-8-GAS, the Company explained that it had accrued \$300,000 of expense in March 2007 in anticipation of incurring interest and penalty charges. That accrual was subsequently reversed in March 2011. Is it common practice for the Company to pass on fines and penalties incurred by the Company to the ratepayers?

Response:

No, the Company does not recover fines and penalties from customers. With regard to the above referenced \$300,000, the Company recorded a journal entry during the test year that reversed an accrual that resulted in a credit, or reduction, to test year expenses related to costs that were accrued in a period outside of the test year. As a result, the Company made a normalizing adjustment to remove the effect of the reduction to expense that was generated by the reversing journal entry.